

Timber Curb, Item 116  
S.B. 1425+00-1430+30 Lt.  
S.E. 1439+00-1440+00 Lt.

Three Cell Guard Rail w/ Light  
Steel Posts, Item 530  
S.B. 1426+00-1433+04 Lt.

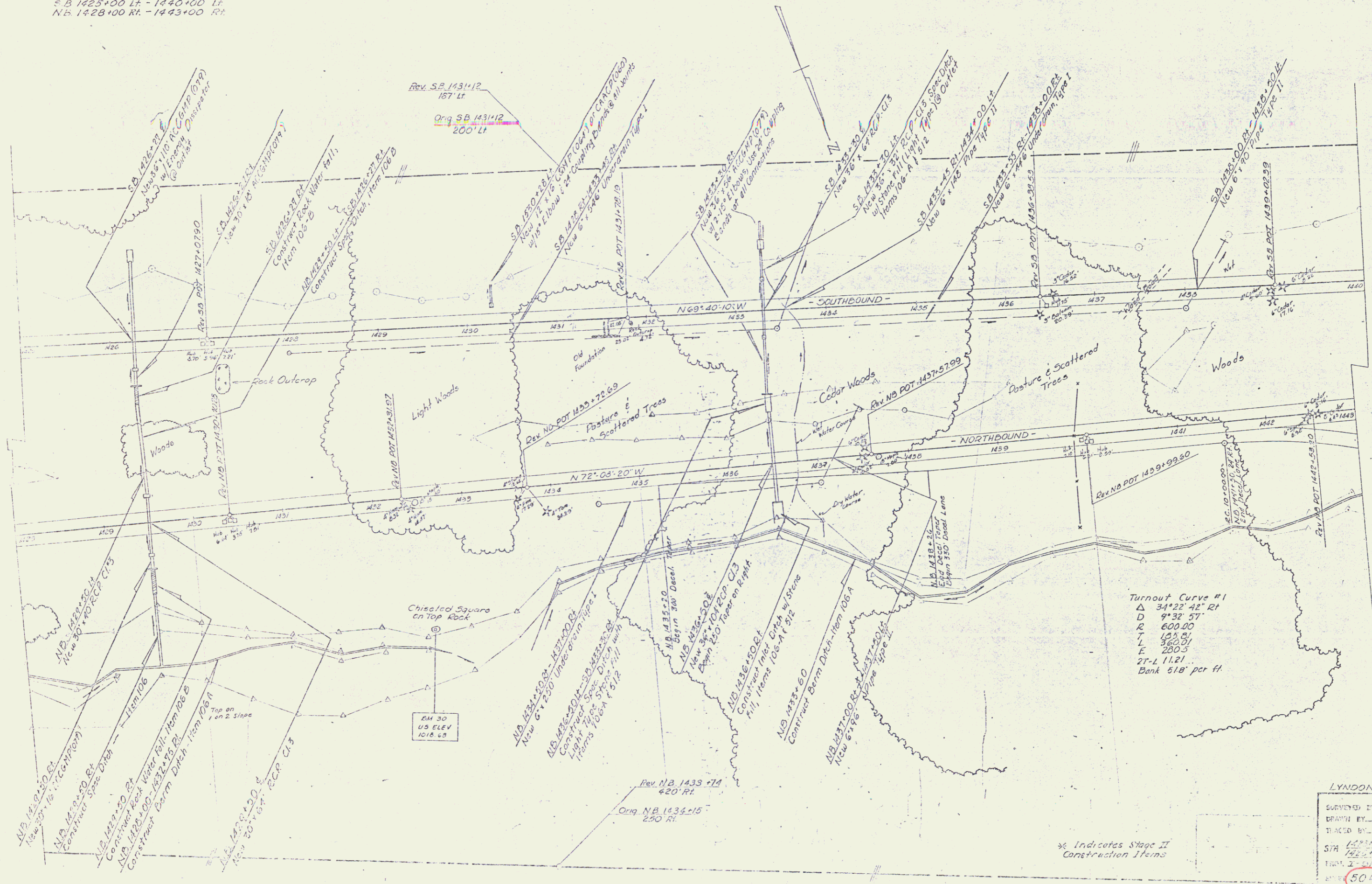
Drilling and Blasting of Solid  
Rock Subgrade - Item 115  
S.B. 1425+00-1428+25  
N.B. 1428+00-1434+25  
N.B. 1437+25-1442+25

Muck Excavation Item 117  
S.B. 1430+00-1440+00  
N.B. 1442+50-1443+50

Std. Steel Beam Guard Rail w/ Steel Posts  
(6'-3" Spacing), Item 543-A  
S.B. 1430+50-1440+00

Sub-base of Sand, Item 202  
N.B. 1433+50-1439+50  
S.B. 1433+00-1435+00

Property Line Fence With Steel Posts Mod., Item 583 II  
S.B. 1425+00 Lt. - 1440+00 Lt.  
N.B. 1428+00 Rt. - 1443+00 Rt.



Turnout Curve #1  
 $\Delta$  34°22'42" RT  
 D 94.32 ST  
 R 600.00  
 L 105.81  
 T 360.01  
 E 200.3  
 ST-L 112.1  
 Bank 5:1B' per ft.

STAGE I CONSTRUCTION  
 LYNDON BARTON - CONT. 2  
 SURVEYED BY: [Signature] DATE: 12-20-03  
 DRAWN BY: [Signature] DATE: 12-20-03  
 CHECKED BY: [Signature] DATE: 12-20-03  
 STA 1425+00 TO STA 1443+00  
 SHEET 2 OF 14  
 504 OF 155