

Property Line Fence with Steel Posts (Mod), Item 503II  
 SB 1425+00-1440+00 Lt.  
 NB 1427+00-1441+00 Rt.

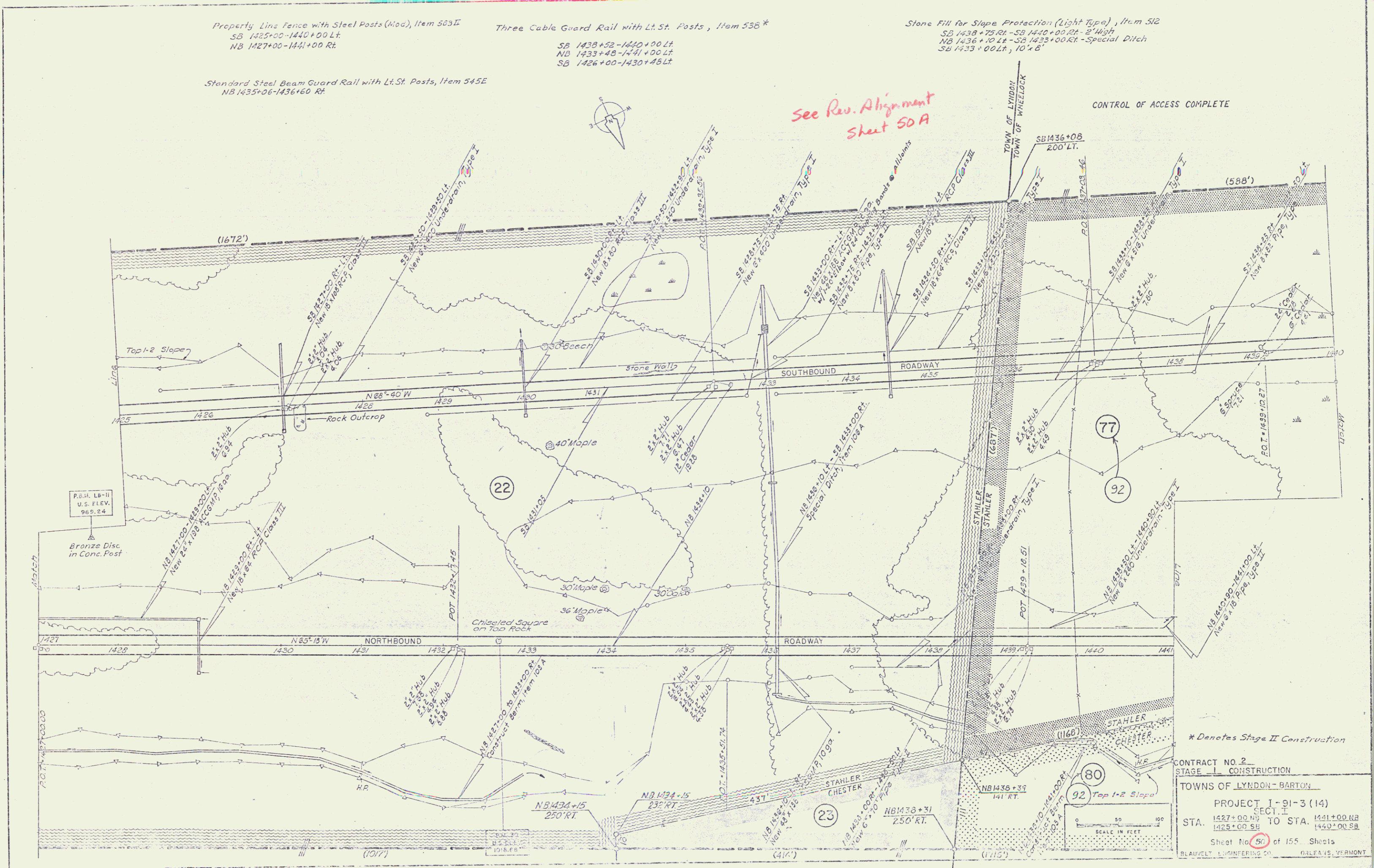
Three Cable Guard Rail with Lt. St. Posts, Item 536\*  
 SB 1438+52-1440+00 Lt.  
 NB 1433+48-1441+00 Lt.  
 SB 1426+00-1430+45 Lt.

Stone Fill for Slope Protection (Light Type), Item 512  
 SB 1438+75 Rt. - SB 1440+00 Rt. - 2' High  
 NB 1436+10 Lt. - SB 1433+00 Rt. - Special Ditch  
 SB 1433+00 Lt., 10' x 8'

Standard Steel Beam Guard Rail with Lt. St. Posts, Item 545E  
 NB 1435+06-1436+60 Rt.

See Rev. Alignment  
 Sheet 50A

CONTROL OF ACCESS COMPLETE



\* Denotes Stage II Construction

CONTRACT NO. 2  
 STAGE I CONSTRUCTION  
 TOWNS OF LYNDON - BARTON  
 PROJECT I-91-3 (14)  
 SECTION I  
 STA. 1427+00 NB TO STA. 1441+00 NB  
 1425+00 SB  
 Sheet No. 50 of 155 Sheets  
 BLAUVELT ENGINEERING CO. ORLEANS, VERMONT