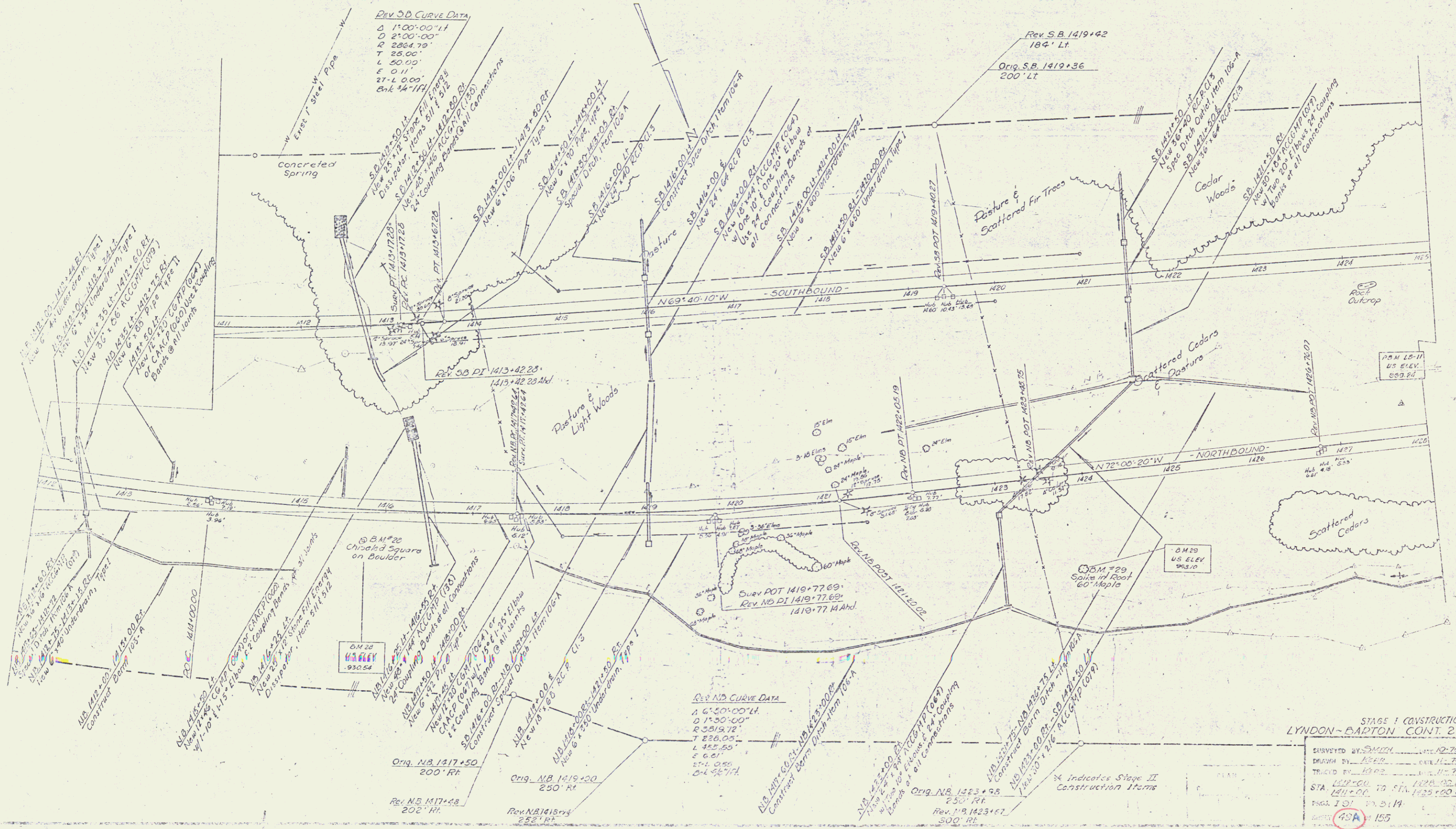


Property Line Fence With Steel Posts Mod. Item
 Item 583-II
 S.B. 1411+00 Lt - 1425+00 Lt.
 N.B. 1412+00 Rt - 1426+00 Rt

Drilling & Blasting of Solid Rock Subgrade
 Item 115
 S.B. 1419+95 - 1425+00
 N.B. 1418+75 - 1419+95
 N.B. 1421+25 - 1426+00

Three Cable Guard Rail with Light
 Steel Posts - Item 538-#
 S.B. 1417+15 - 1419+05 Lt.
 S.B. 1411+00 - 1413+50 Lt.

Sub-base of Sand 18" in 202
 S.B. 1417+50 - 1421+00



STAGE I CONSTRUCTION
 LYNDON - BARTON CONT. 2

SURVEYED BY	SMITH	DATE	10-70
DRAWN BY	HEPER	DATE	11-70
TRACED BY	HEPER	DATE	11-70
STA	1417+00 TO STA 1426+00		
PROJ. 101			
DATE	12-14		
SCALE	1" = 155'		