

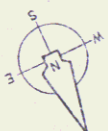
Wire Matting, Item 623 \*  
NB 1419+00 - 1421+00 Rt.  
NB 1420+25 - 1422+50 Lt.

Three Cable Guard Rail with Lt. St. Posts Item 538 \*  
NB 1412+00 - 1422+00 Lt.  
SB 1411+00 - 1415+50 Lt.

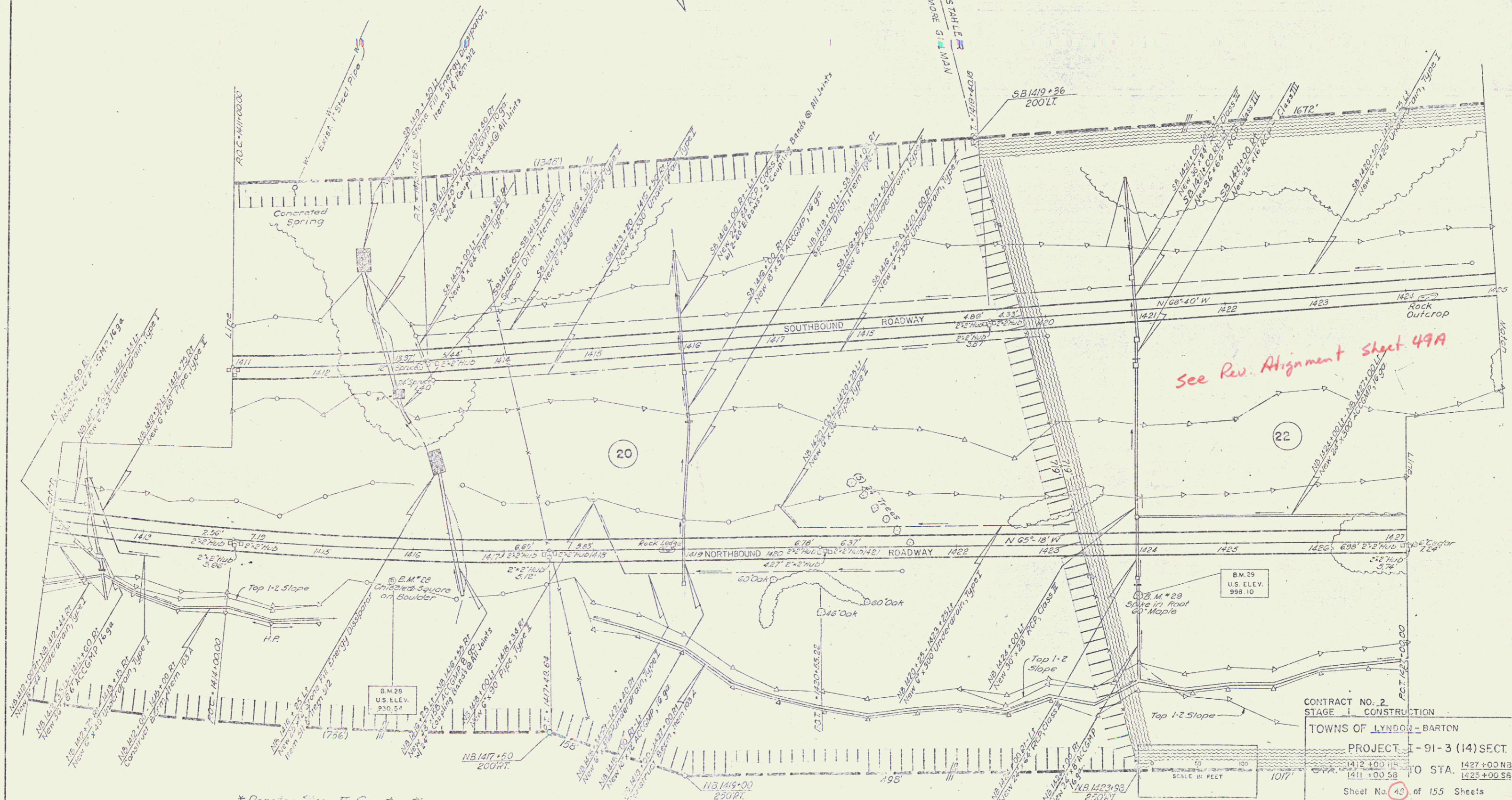
Property Line Fence with Steel Posts (Mod) Item 583 II  
SB 1411+00 - 1425+00 Lt.  
NB 1412+00 - 1427+00 Rt.

Stone Fill For Slope Protection (Light Type) Item 512  
NB 1415+20 - 1417+80 Rt. - 2' High  
SB 1412+80 Rt. - SB 1413+05 Rt. - Special Ditch  
NB 1412+60 Rt. - NB 1412+67 Rt.  
SB 1416+00 Rt. - NB 1419+00 Lt. - Special Ditch  
SB 1421+00 Rt. - NB 1424+00 Lt. - Special Ditch  
NB 1424+00 Rt. - Special Ditch

Standard Steel Beam Guard Rail  
w/ Lt. St. Posts - Item 545-E  
SB 1411+70 - 1413+30 Rt.  
NB 1415+51 - 1417+05 Rt.



CONTROL OF ACCESS COMPLETE ON THIS SHEET



\* Denotes Stage II Construction

CONTRACT NO. 2  
STAGE I CONSTRUCTION  
TOWNS OF LYNDON - BARTON  
PROJECT I - 91-3 (14) SECT. I  
1412+00 NB TO STA 1427+00 NB  
1411+00 SB TO STA 1425+00 SB  
Sheet No. 40 of 155 Sheets  
BLAINELT ENGINEERING CO. OILFAMS, VERMONT