

Demolition and Disposal of Building Item 556
SB 1375+50 Rt.
SB 1374+80 Rt.

Treated Timber Curb, Item 558 *
SB 1366+00-1367+00 Lt.
NB 1367+00-1370+50 Lt.

Continuous Concrete Curb Item 557
SB 1367+00-1369+52 Lt.
SB 1367+00-1369+38 Rt.
NB 1370+50-1372+32 Lt.
NB 1372+00-1372+39 Rt.

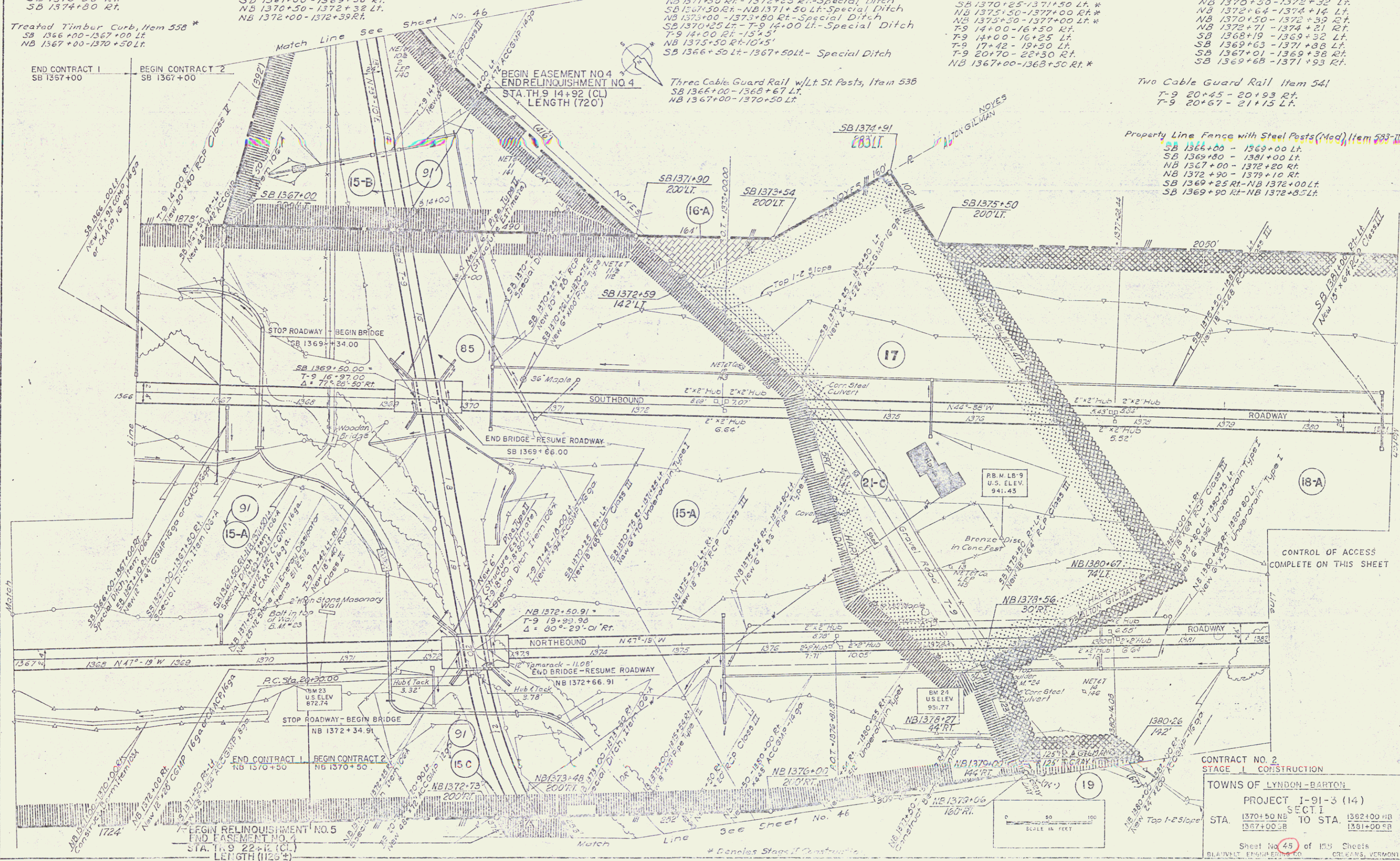
Stone Fill for Slope Protection (Light Type) Item 512
NB 1371+50 Rt-1372+25 Rt-Special Ditch
SB 1371+50 Rt-NB 1371+50 Lt-Special Ditch
NB 1375+00-1373+80 Rt-Special Ditch
SB 1370+50 Lt-T-9 14+00 Lt-Special Ditch
T-9 14+00 Rt-15+5'
NB 1375+50 Rt-10+5'
SB 1366+50 Lt-1367+50 Lt-Special Ditch

Jute Matting Item 623
SB 1370+50-1371+00 Rt.*
SB 1370+25-1371+50 Lt.*
NB 1375+50-1377+00 Rt.*
NB 1375+50-1377+00 Lt.*
T-9 14+00-16+50 Rt.
T-9 14+00-16+25 Lt.
T-9 17+42-19+50 Lt.
T-9 20+70-22+30 Rt.
NB 1367+00-1368+50 Rt.*

Bridge Railing for Bridge Approaches Item 572
NB 1370+50-1372+32 Lt.
NB 1372+64-1374+14 Lt.
NB 1370+50-1372+39 Rt.
NB 1372+71-1374+21 Rt.
SB 1368+19-1369+32 Lt.
SB 1369+63-1371+38 Rt.
SB 1367+01-1369+38 Rt.
SB 1369+68-1371+93 Rt.

Two Cable Guard Rail Item 541
T-9 20+45-20+93 Rt.
T-9 20+67-21+15 Lt.

Property Line Fence with Steel Posts (Med) Item 583-II
SB 1366+00-1369+00 Lt.
SB 1369+80-1381+00 Lt.
NB 1367+00-1372+20 Rt.
NB 1372+90-1379+10 Rt.
SB 1369+25 Rt-NB 1372+00 Lt.
SB 1369+90 Rt-NB 1372+35 Lt.



CONTRACT NO. 2
STAGE I CONSTRUCTION
TOWNS OF LYNDON-BARTON
PROJECT I-91-3 (14)
SECTION I
STA. 1370+50 NB TO STA. 1382+00 NB
1367+00 SB
Sheet No. 45 of 155 Sheets
BLANKET CONTRACT NO. 600-100-0000
CITY OF VERMONT