

Property Line Fence with Steel Posts (Med) Item 583
 SB 1273+00 - 1285+00 Lt
 NB 1273+00 - 1285+00 Rt

Treated Timber Curb Item 558 *
 NB 1273+50 - 1285+00 Rt
 SB 1285+00 Bk - 1285+00 Ahd Lt

Three Cable Guard Rail with Steel Posts - Item 542 *
 NB 1273+00 - 1285+00 Rt
 NB 1285+00 - 1285+00 Lt
 SB 1273+00 - 1276+64 Rt
 SB 1276+03 - 1285+00 Lt

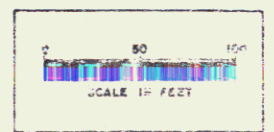
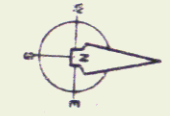
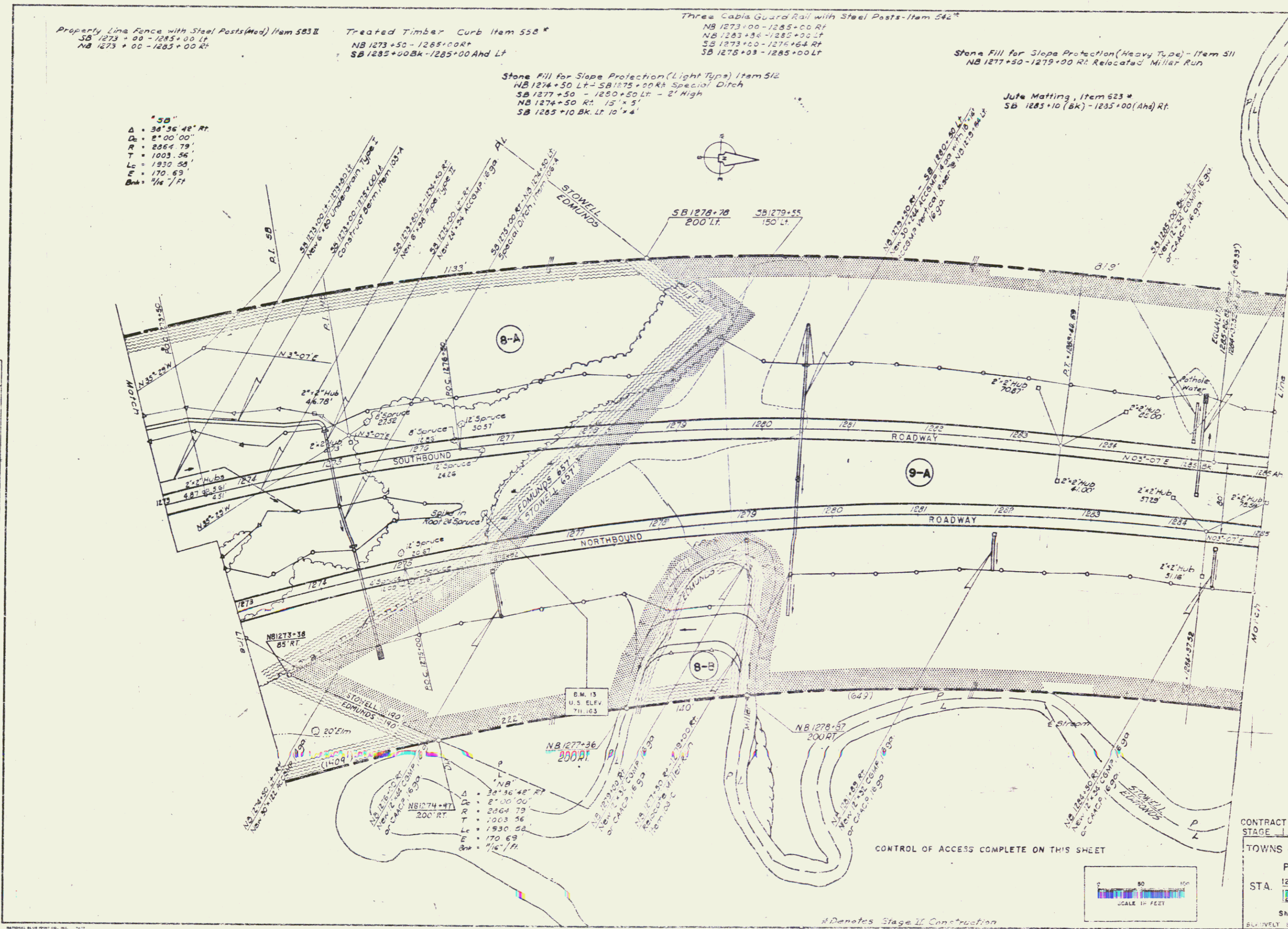
Stone Fill for Slope Protection (Heavy Type) - Item 511
 NB 1277+50 - 1279+00 Rt Relocated Miller Run

Stone Fill for Slope Protection (Light Type) Item 512
 NB 1274+50 Lt - SB 1275+00 Rt Special Ditch
 SB 1277+50 - 1280+50 Lt - 2' High
 NB 1274+50 Rt - 15' x 5'
 SB 1285+10 Bk Lt 10' x 4'

Jute Matting, Item 523 *
 SB 1285+10 (Bk) - 1285+00 (Ahd) Rt

* 30"
 Δ = 36° 56' 42" Rt
 Dc = 2° 00' 00"
 R = 2864.79'
 T = 1003.56'
 Lc = 1930.52'
 E = 170.69'
 Bk = 1/4" / Ft

DATE	BY	REVISION
12/15/88	J.C.	ISSUED FOR CONSTRUCTION
12/15/88	J.C.	REVISED
12/15/88	J.C.	REVISED
12/15/88	J.C.	REVISED
12/15/88	J.C.	REVISED



CONTROL OF ACCESS COMPLETE ON THIS SHEET

* Denotes Stage II Construction

CONTRACT NO. 1
 STAGE 1 CONSTRUCTION
 TOWNS OF LYNDON-BARTON
 PROJECT I-91-3 (14)
 SECT. 1
 STA. 1273+00 NB TO STA. 1285+00 NB
 1273+00 Bk TO 1285+00 Bk
 Sheet No. 15 of 155 Sheets
 SURVEY ENGINEERING CO. GREENSBORO, N.C.