

Three Cable Guard Rail with Steel Posts Item 512 \*  
 NB 1260+00-1260+94 Rt  
 NB 1263+00-1273+00 Rt  
 SB 1260+00-1264+10 Rt  
 SB 1268+80-1273+00 Rt

Property Line Fence with Steel Posts (Mod.) Item 511  
 SB 1260+00-1273+00 Lt  
 NB 1260+00-1273+00 Rt

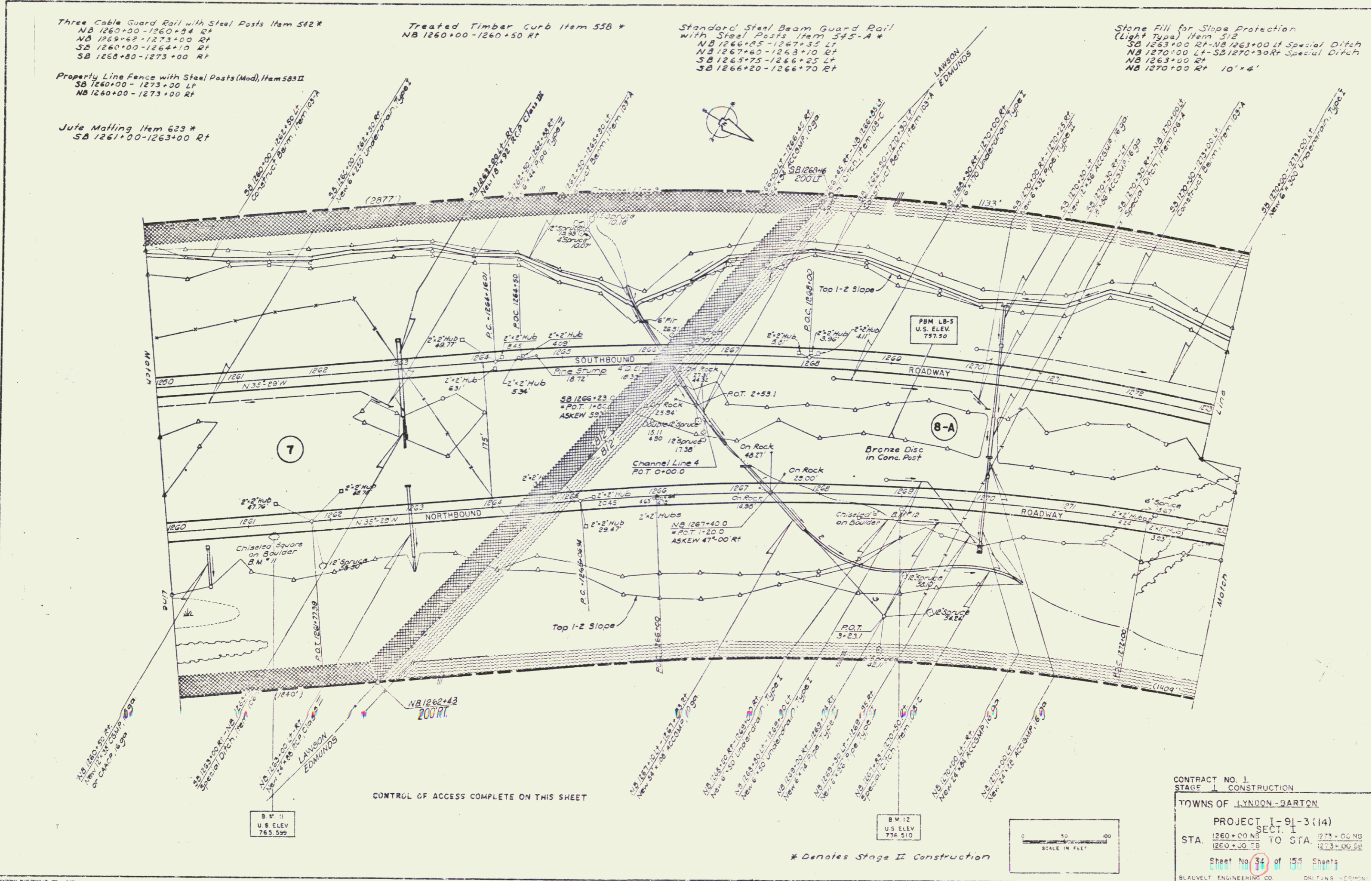
Jute Matting Item 623 \*  
 SB 1261+00-1263+00 Rt

Treated Timber Curb Item 55B \*  
 NB 1260+00-1260+50 Rt

Standard Steel Beam Guard Rail  
 with Steel Posts Item 54S-A \*  
 NB 1266+85-1267+35 Lt  
 NB 1267+60-1268+10 Rt  
 SB 1266+75-1266+25 Lt  
 SB 1266+20-1266+70 Rt

Stone Fill for Slope Protection  
 (Light Type) Item 512  
 SB 1263+00 Rt-NB 1263+00 Lt Special Ditch  
 NB 1270+00 Lt-SB 1270+30 Rt Special Ditch  
 NB 1263+00 Rt  
 NB 1270+00 Rt 10'x4'

PLAN	DATE	BY	CHECKED
REVISED			
NOTED			
REVISION			
NO. OF SHEETS			
NO. OF SHEETS CHECKED			
TRACED			



CONTRACT NO. 1  
 STAGE I CONSTRUCTION  
 TOWNS OF LYNDON-BARTON  
 PROJECT I-91-3(14)  
 SECT. I  
 STA. 1260+00 NB TO STA. 1273+00 NB  
 1260+00 SB TO STA. 1273+00 SB  
 Sheet No. 34 of 159 Sheets  
 BLAUVELT ENGINEERING CO. ONE FIVE SEVEN