

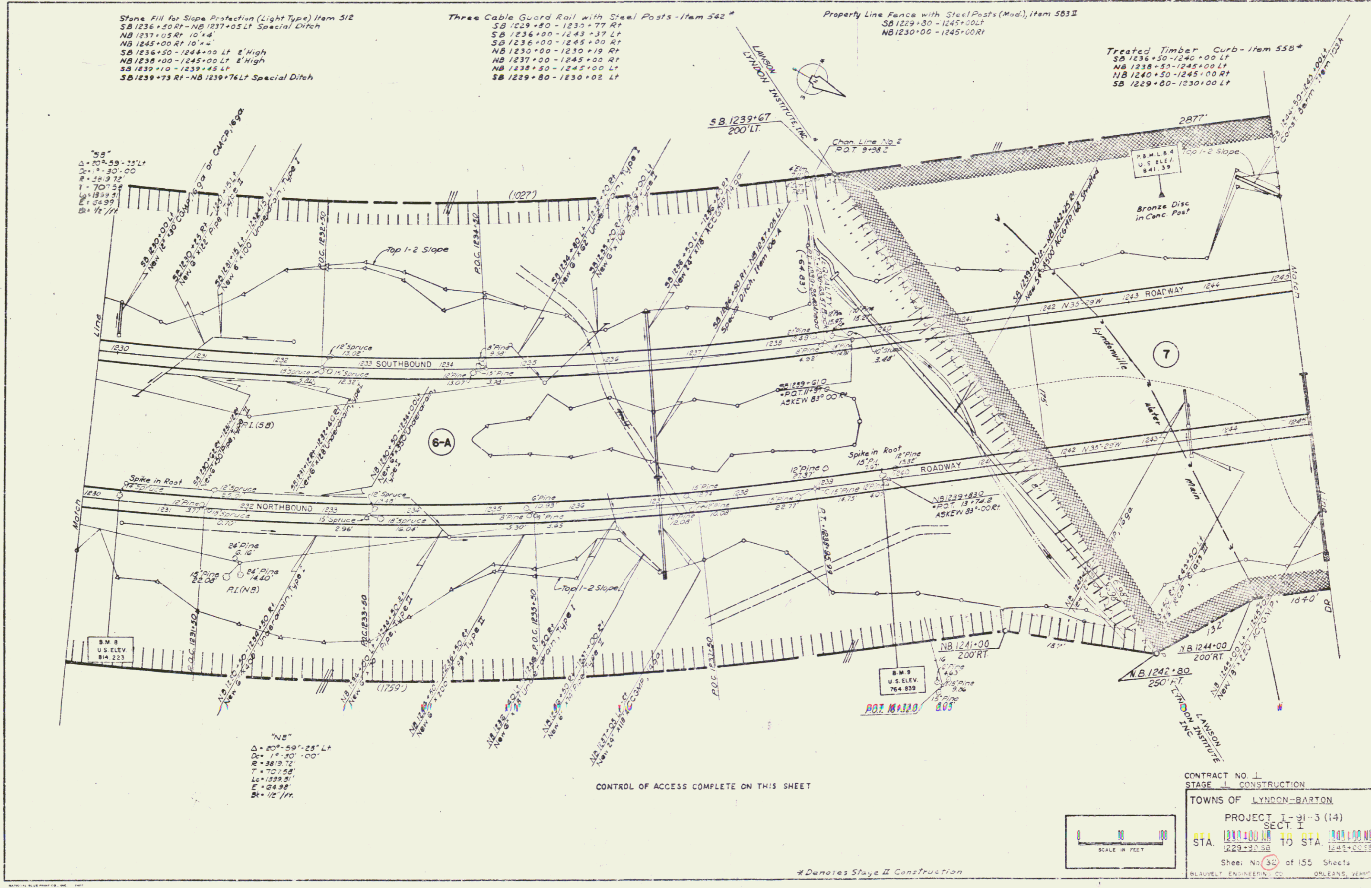
Stone Fill for Slope Protection (Light Type) Item 512
 SB 1236+50 RT - NB 1237+05 Lt Special Ditch
 NB 1237+05 RT 10' x 4'
 NB 1245+00 RT 10' x 4'
 SB 1236+50 - 1244+00 Lt 2' High
 NB 1238+00 - 1245+00 Lt 2' High
 SB 1239+10 - 1239+45 Lt
 SB 1239+73 Rt - NB 1239+76 Lt Special Ditch

Three Cable Guard Rail with Steel Posts - Item 542*
 SB 1229+80 - 1230+77 Rt
 SB 1236+00 - 1243+37 Lt
 SB 1236+00 - 1245+00 Rt
 NB 1230+00 - 1230+19 Rt
 NB 1237+00 - 1245+00 Rt
 NB 1238+50 - 1245+00 Lt
 SB 1229+80 - 1230+02 Lt

Property Line Fence with Steel Posts (Mod), Item 583 II
 SB 1229+80 - 1245+00 Lt
 NB 1230+00 - 1245+00 Rt

Treated Timber Curb - Item 558*
 SB 1236+50 - 1240+00 Lt
 NB 1238+50 - 1245+00 Lt
 NB 1240+50 - 1245+00 Rt
 SB 1229+80 - 1230+00 Lt

PLAN	DATE	BY	CHKD
REVISION			
NO.	DATE	BY	CHKD
1	10/1/78	J.M.	J.M.
2	10/1/78	J.M.	J.M.
3	10/1/78	J.M.	J.M.
4	10/1/78	J.M.	J.M.
5	10/1/78	J.M.	J.M.
6	10/1/78	J.M.	J.M.
7	10/1/78	J.M.	J.M.
8	10/1/78	J.M.	J.M.
9	10/1/78	J.M.	J.M.
10	10/1/78	J.M.	J.M.



CONTROL OF ACCESS COMPLETE ON THIS SHEET



CONTRACT NO. 1
 STAGE 1 CONSTRUCTION
 TOWNS OF LYNDON-BARTON
 PROJECT I-91-3 (14)
 SECT. I
 STA. 1229+00.00 TO STA. 1244+00.00
 Sheet No. 32 of 150 Sheets
 BRAUVELT ENGINEERING CO. ORLEANS, VERMONT

* Denotes Stage II Construction