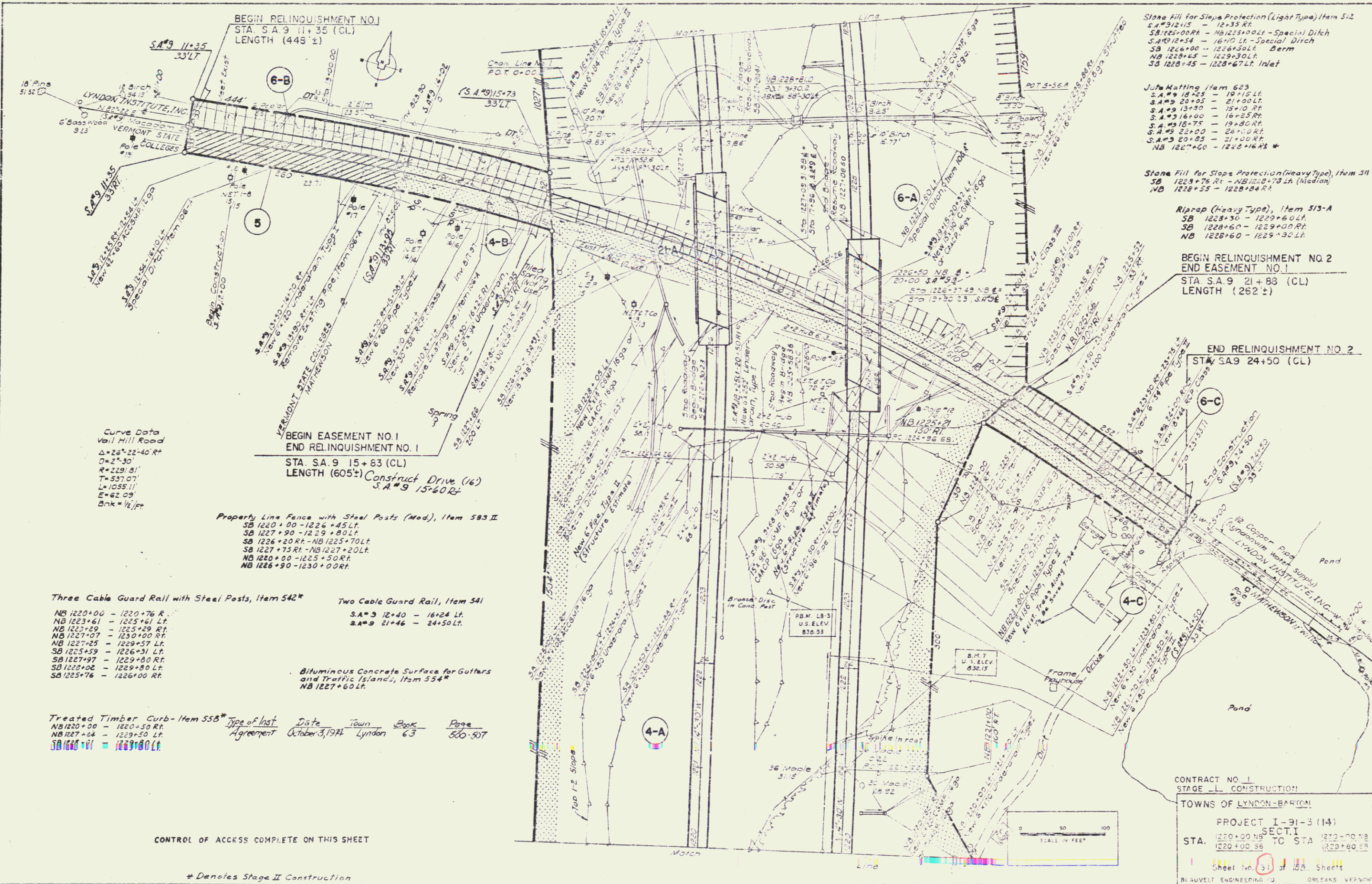


PLAN	REVISION
NO.	DATE
1	10/3/94
2	10/3/94
3	10/3/94
4	10/3/94
5	10/3/94
6	10/3/94
7	10/3/94
8	10/3/94
9	10/3/94
10	10/3/94
11	10/3/94
12	10/3/94
13	10/3/94
14	10/3/94
15	10/3/94
16	10/3/94
17	10/3/94
18	10/3/94
19	10/3/94
20	10/3/94
21	10/3/94
22	10/3/94
23	10/3/94
24	10/3/94
25	10/3/94
26	10/3/94
27	10/3/94
28	10/3/94
29	10/3/94
30	10/3/94
31	10/3/94
32	10/3/94
33	10/3/94
34	10/3/94
35	10/3/94
36	10/3/94
37	10/3/94
38	10/3/94
39	10/3/94
40	10/3/94
41	10/3/94
42	10/3/94
43	10/3/94
44	10/3/94
45	10/3/94
46	10/3/94
47	10/3/94
48	10/3/94
49	10/3/94
50	10/3/94



CONTRACT NO. 1
STAGE - I CONSTRUCTION
TOWNS OF LYNDON-BARTON
PROJECT I-91-3 (14)
SECT. I
STA. 1220+00 NB TO STA 1230+00 NB
1220+00 SB TO STA 1229+80 SB
Sheet No. 51 of 55 Sheets
BLAUVELT ENGINEERING, ORLEANS, VERMONT