

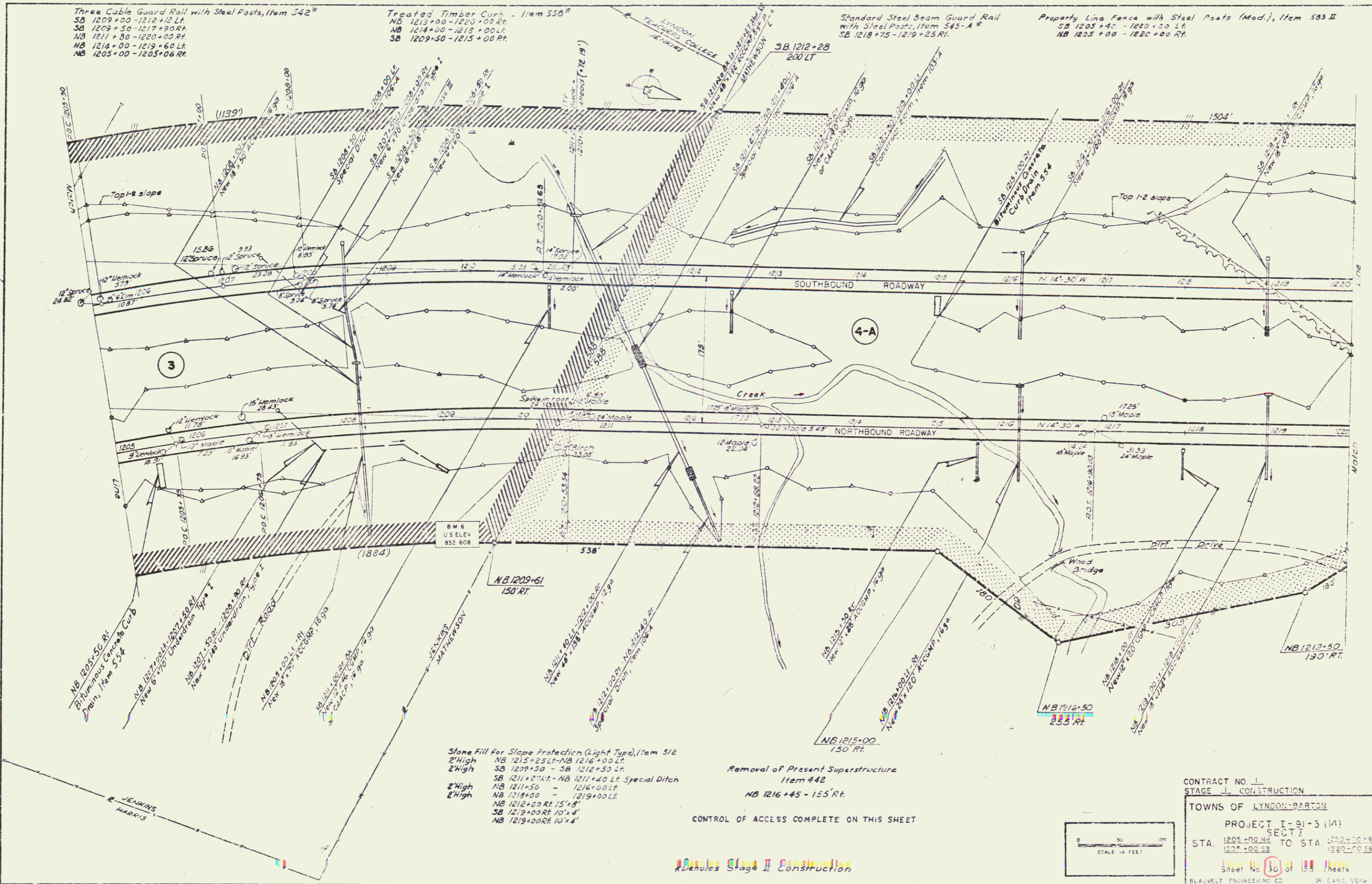
Three Cable Guard Rail with Steel Posts, Item 542*
 SB 1209+00 - 1212+12 Lt.
 SB 1209+50 - 1217+90 Rt.
 NB 1211+30 - 1220+00 Rt.
 NB 1214+00 - 1219+60 Lt.
 NB 1205+00 - 1205+06 Rt.

Treated Timber Curb - Item 558*
 NB 1213+00 - 1220+00 Lt.
 NB 1214+00 - 1218+00 Lt.
 SB 1209+50 - 1215+00 Rt.

Standard Steel Beam Guard Rail
 With Steel Posts, Item 545-A*
 SB 1218+75 - 1219+25 Rt.

Property Line Fence with Steel Posts (Mod.), Item 583 II
 SB 1205+40 - 1220+00 Lt.
 NB 1205+00 - 1220+00 Rt.

DATE	BY	REVISION
11/15/82	JL	1. PLOTTED
11/15/82	JL	2. CHECKED
11/15/82	JL	3. REVISIONS
11/15/82	JL	4. REVISIONS
11/15/82	JL	5. REVISIONS
11/15/82	JL	6. REVISIONS
11/15/82	JL	7. REVISIONS
11/15/82	JL	8. REVISIONS
11/15/82	JL	9. REVISIONS
11/15/82	JL	10. REVISIONS

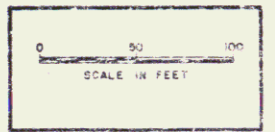


Stone Fill for Slope Protection (Light Type), Item 512
 2' High NB 1215+25 Lt - NB 1216+00 Lt.
 2' High SB 1209+50 - SB 1212+50 Lt.
 2' High NB 1211+27 Rt - NB 1211+40 Lt. Special Ditch
 NB 1211+50 - 1216+00 Lt.
 NB 1219+00 - 1219+00 Lt.
 NB 1212+00 Rt 15' x 4'
 SB 1219+00 Rt 10' x 4'
 NB 1219+00 Rt 10' x 4'

Removal of Present Superstructure
 Item 442
 NB 1216+45 - 155 Rt.

CONTROL OF ACCESS COMPLETE ON THIS SHEET

Replaces Stage II Construction



CONTRACT NO. 1
 STAGE 1 CONSTRUCTION
 TOWNS OF LYNDON-BARTON
 PROJECT I-91-3 (14)
 SECTION I
 STA. 1205+00 NB TO STA. 1220+00 NB
 1205+00 SB TO 1220+00 SB
 Sheet No. 30 of 123 Sheets
 BLAUVELT ENGINEERING CO. DR. CARL VERWIL