

Property Line Fence with Steel Posts (Wood), Item 523 II  
 SB 1175+00 - 1189+65 Lt  
 NB 1175+00 - 1190+00 Rt

Stone Fill for Slope Protection (Light Type), Item 512  
 2' High - SB 1174+00 Lt - SB 1177+25 Lt  
 2' High - SB 1186+00 Lt - SB 1187+50 Lt  
 2' High - NB 1175+50 - NB 1187+00 Rt  
 2' High - SB 1186+25 - SB 1187+50 Rt  
 2' High - NB 1186+50 - NB 1189+50 Lt  
 NB 1176+00 Rt - 10' x 14'  
 2' High - NB 1175+90 - NB 1176+10 Rt

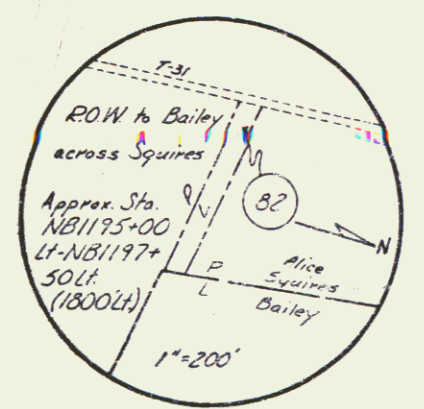
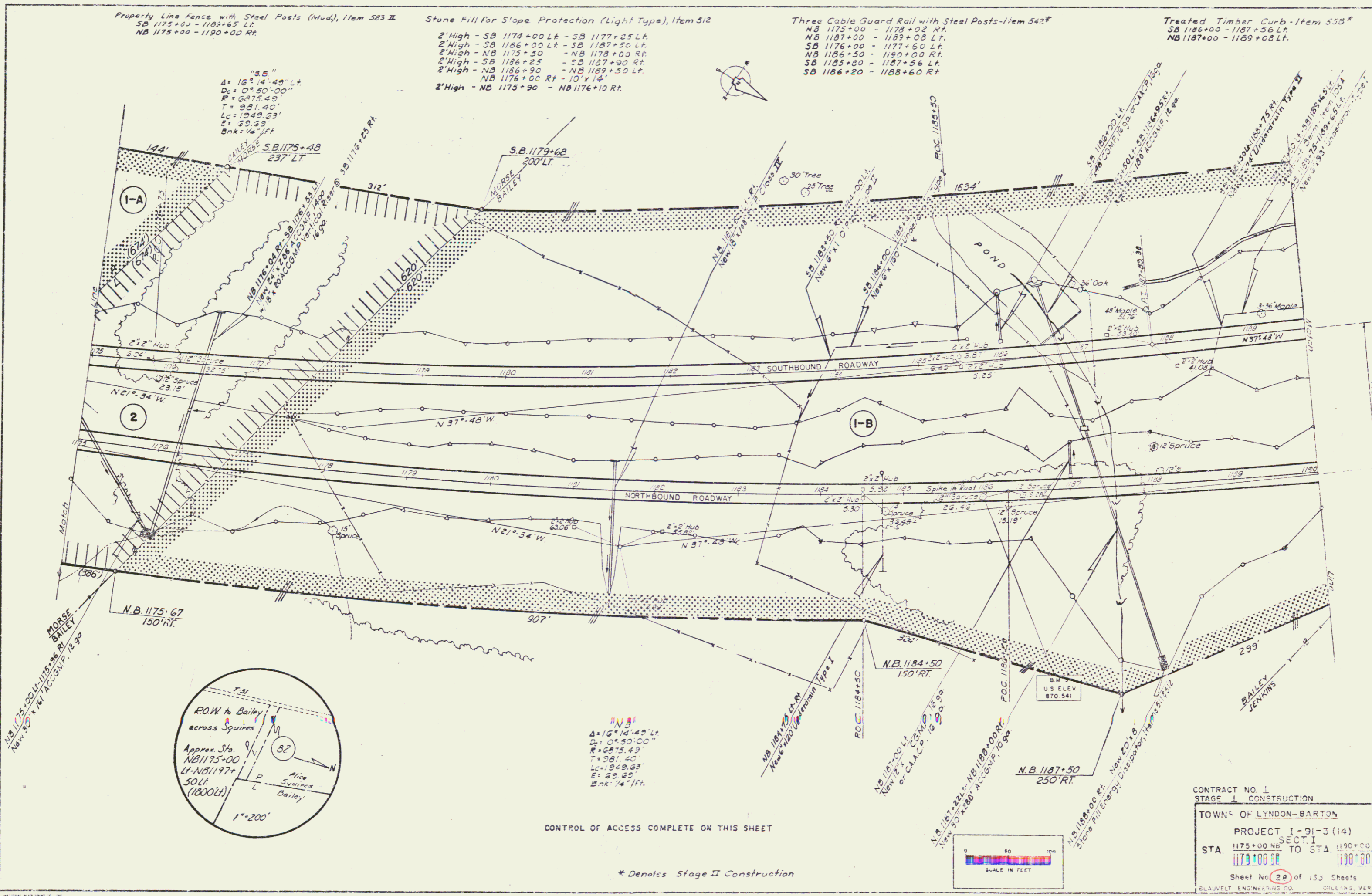
Three Cable Guard Rail with Steel Posts-Item 542\*  
 NB 1175+00 - 1178+02 Rt  
 NB 1187+00 - 1189+08 Lt  
 SB 1176+00 - 1177+50 Lt  
 NB 1186+50 - 1190+00 Rt  
 SB 1185+00 - 1187+56 Lt  
 SB 1186+20 - 1188+60 Rt

Treated Timber Curb-Item 533\*  
 SB 1186+00 - 1187+56 Lt  
 NB 1187+00 - 1189+08 Lt

"3.5"  
 Δ = 16° 14' 49" Lt  
 D = 0° 50' 00"  
 R = 6875.49'  
 T = 981.40'  
 Lc = 1049.63'  
 E = 29.29'  
 Bnk = 1/4" Ft



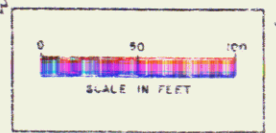
PLAN	REVISED	DATE
NOTED	BY	
CHECKED	BY	
APPROVED	BY	



"3.5"  
 Δ = 16° 14' 49" Lt  
 D = 0° 50' 00"  
 R = 6875.49'  
 T = 981.40'  
 Lc = 1049.63'  
 E = 29.29'  
 Bnk = 1/4" Ft

CONTROL OF ACCESS COMPLETE ON THIS SHEET

\* Denotes Stage II Construction



CONTRACT NO. 1  
 STAGE I CONSTRUCTION  
 TOWNS OF LYNDON-BARTON  
 PROJECT I-91-3 (14)  
 SECTION I  
 STA. 1175+00 NB TO STA. 1190+00 NB  
 1175+00 SE TO 1190+00 SE  
 Sheet No. 2A of 150 Sheets  
 BLAUVELT ENGINEERS CO. DILLONS, VERMONT