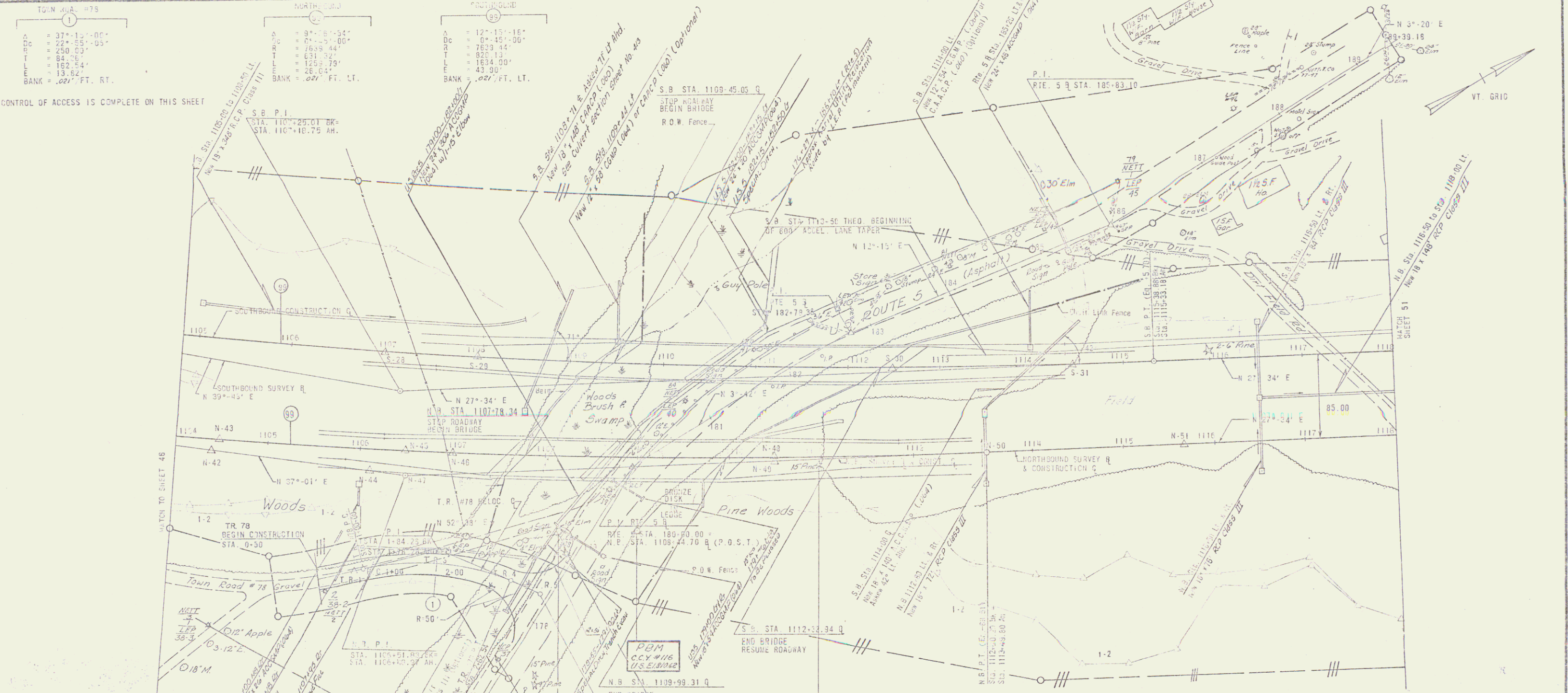


TOWN ROAD #78		NORTHBOUND		SOUTHBOUND	
A	37'-11"-00"	A	0'-5'-34"	A	12'-15'-16"
B	32'-35'-05"	B	0'-15'-00"	B	0'-15'-00"
C	250'-00"	C	7639'-44"	C	7829'-34"
D	84'-75"	D	631'-02"	D	820'-13"
E	182'-34"	E	1259'-79"	E	1634'-00"
F	13'-52"	F	26'-04"	F	43'-00"
BANK = .021' FT. RT.		BANK = .027' FT. LT.		BANK = .027' FT. LT.	

CONTROL OF ACCESS IS COMPLETE ON THIS SHEET



- * BRIDGE PAILING - 2" GALV ALUMINUM
 - S.B. STA. 1107+93 TO STA. 1109+06 RT.
 - S.B. STA. 1105+02 TO STA. 1109+52 LT.
 - S.P. STA. 1112+15 TO STA. 1114+40 RT.
 - S.B. STA. 1112+69 TO STA. 1112+90 LT.
 - N.B. STA. 1115+18 TO STA. 1115+43 RT.
 - N.B. STA. 1105+06 TO STA. 1107+81 LT.
 - N.B. STA. 1107+16 TO STA. 1110+59 RT.
 - N.B. STA. 1110+16 TO STA. 1111+66 LT.
- * GUARD RAIL, STD. STEEL BEAM W/ STEEL POSTS
 - TYPE II (2'-0" SPACING)
 - NB 1107+50 LT - SB 1109+00 RT
 - NB 1107+35 LT - SB 1112+00 RT

- * APPROX. Aerial Utility Reloc. Route by L.P. & N.E.T.
- * APPROX. UNDERGROUND UTILITY RELOCATION ROUTE BY L.P. (Temporary)
- * CHAIN LINK FENCE (6' HIGH)
 - S.B. STA. 1114+00 TO STA. 1118+00 LT.
- * WOVEN WIRE FENCE WITH STEEL POSTS
 - N.B. STA. 1102+00 TO STA. 1107+57 RT.
 - S.B. STA. 1104+83 TO STA. 1109+75 LT.
 - N.B. STA. 1109+00 TO STA. 1118+00 FT.
- * TREATED TIMBER CURB
 - S.B. STA. 1109+00 TO STA. 1109+48 LT.
 - S.B. STA. 1112+70 TO STA. 1114+00 LT.
- * GUARD RAIL, STANDARD STEEL BEAM WITH STEEL POSTS
 - 170+75 ~ 182+75 LT (US RTES)
 - SB 1112+96 ~ 1115+46 LT

- * REMOVE AND DEMOLISH OF EXISTING CONCRETE CURB
 - US 5' 179+50 ~ 182+50 LT
- * STONE FILL
 - NB 1106+00 ~ 1107+95 RT, Type II
- * CONSTRUCT CUTTER
 - N.B. STA. 1110+36 TO STA. 1111+90 LT.
- * DRILLING & BLASTING OF SOLID ROCK SUBGRADE
 - NB 1104+00 ~ 1107+25
 - NB 1110+25 ~ 1118+00
 - SB 1105+25 ~ 1108+25
 - SB 1113+75 ~ 1118+00
- * PLAN SCALE: 1" = 40' (VERT.)
- * DENOTES STAGE 2 ITEMS
- * ALBANY CONSULTING ENGINEERS NEW YORK

TOWN ROAD #78 IS TO BE BUILT IN ITS ENTIRETY DURING STAGE I CONSTRUCTION
NOTE: FOR R - C TIES SEE TIE SHEETS NO. 30, 31 & 32

STATE OF VERMONT DEPARTMENT OF HIGHWAYS	
TOWN OF	ST. JOHNSBURY-LYNDON
ROUTE NO.	1-31 STA.
SOUTHBOUND 1108+00 TO 1118+00	
NORTHBOUND 1109+00 TO 1118+00	
CONTRACT	T.R. #78 0+00 TO 2+00
STAGE CONSTRUCTION II	
PROJECT NO.	1-512-1-1 (M)
SHEET	48 OF

SURVEYED BY C.C.I.
 DRAWN BY J.M.
 CHECKED BY J.P.
 COMPLETED 11/77