

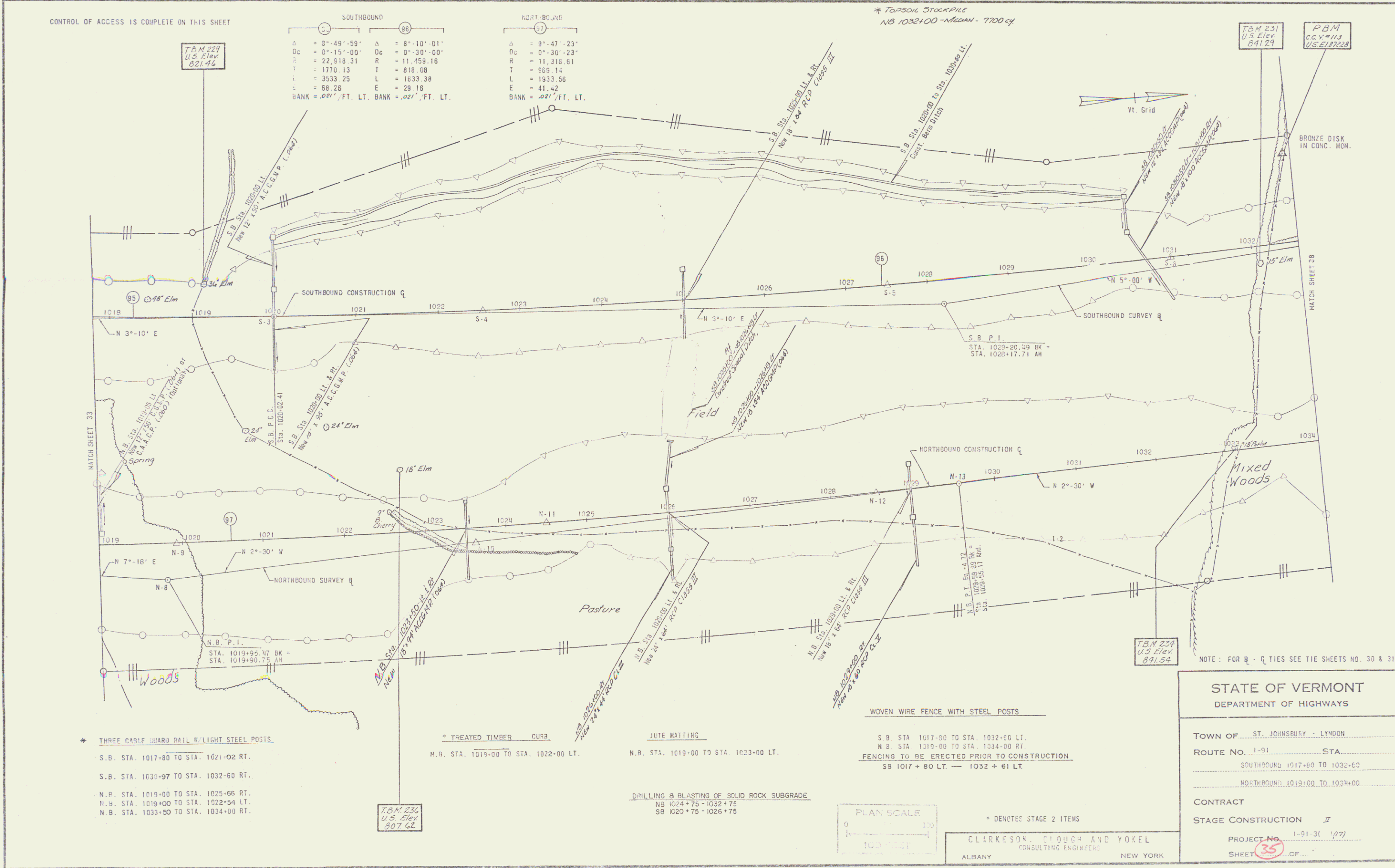
CONTROL OF ACCESS IS COMPLETE ON THIS SHEET

SOUTHBOUND		NORTHBOUND	
$\Delta = 0^\circ-49'-59''$	$\Delta = 8^\circ-10'-01''$	$\Delta = 9^\circ-47'-23''$	
$Dc = 0^\circ-15'-00''$	$Dc = 0^\circ-30'-00''$	$Dc = 0^\circ-30'-23''$	
$T = 22,918.31$	$R = 11,459.16$	$R = 11,318.61$	
$T = 1770.13$	$T = 818.08$	$T = 969.14$	
$L = 3533.25$	$L = 1633.38$	$L = 1933.58$	
$E = 58.28$	$E = 29.18$	$E = 41.42$	
BANK = .027' FT. LT. BANK = .027' FT. LT.		BANK = .027' FT. LT.	

* TOPSOIL STOCKPILE
NB 1032+00 - MEDAN - 7700 CF

T.B.M. 231
U.S. Elev.
891.29

P.B.M.
CCY-413
U.S.E. 87228



* THREE CABLE GUARD RAIL W/ LIGHT STEEL POSTS

S.B. STA. 1017+80 TO STA. 1021+02 RT.
S.B. STA. 1030+97 TO STA. 1032+60 RT.
N.P. STA. 1019+00 TO STA. 1025+66 RT.
N.B. STA. 1019+00 TO STA. 1022+54 LT.
N.B. STA. 1033+50 TO STA. 1034+00 RT.

* TREATED TIMBER CURB

M.R. STA. 1019+00 TO STA. 1022+00 LT.

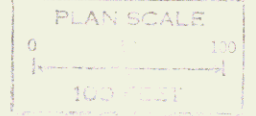
JUTE MATTING

N.B. STA. 1019+00 TO STA. 1023+00 LT.

DRILLING & BLASTING OF SOLID ROCK SUBGRADE
NB 1024+75 - 1032+75
SB 1020+75 - 1026+75

WOVEN WIRE FENCE WITH STEEL POSTS

S.B. STA. 1017+80 TO STA. 1032+00 LT.
N.B. STA. 1019+00 TO STA. 1034+00 RT.
FENCING TO BE ERRECTED PRIOR TO CONSTRUCTION
SB 1017+80 LT. - 1032+61 LT.



* DENOTES STAGE 2 ITEMS
CLARKESON, CLOUGH AND YOKEL
CONSULTING ENGINEERS
ALBANY NEW YORK

STATE OF VERMONT
DEPARTMENT OF HIGHWAYS

TOWN OF ST. JOHNSBURY - LYNDON
ROUTE No. 1-91 STA.
SOUTHBOUND 1017+80 TO 1032+60
NORTHBOUND 1012+00 TO 1034+00

CONTRACT
STAGE CONSTRUCTION II
PROJECT No. 1-91-31 (122)
SHEET 35 OF 37

DRAWN BY C.C. CLARK
 CHECKED BY J.H. CLARK
 DATE 10/15/54