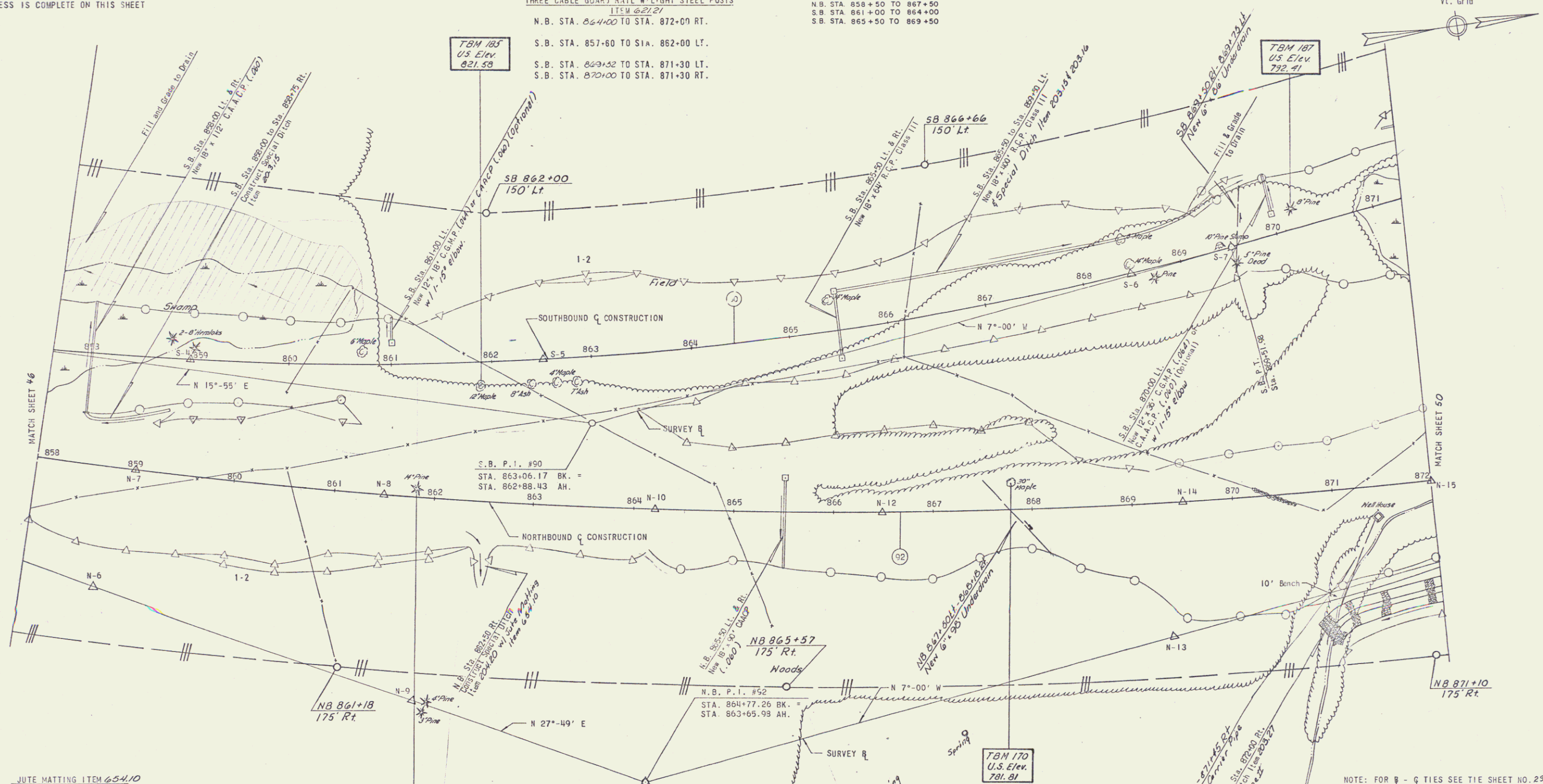


CONTROL OF ACCESS IS COMPLETE ON THIS SHEET

THREE CABLE GUARD RAIL W/LIGHT STEEL POSTS  
ITEM 62121  
N.B. STA. 864+00 TO STA. 872+00 RT.  
S.B. STA. 857+60 TO STA. 862+00 LT.  
S.B. STA. 869+52 TO STA. 871+30 LT.  
S.B. STA. 870+00 TO STA. 871+30 RT.

DRILLING AND BLASTING OF SOLID ROCK  
SUBGRADE, ITEM 20610  
N.B. STA. 858+50 TO 867+50  
S.B. STA. 861+00 TO 864+00  
S.B. STA. 865+50 TO 869+50



JUTE MATTING ITEM 65410  
N.B. STA. 869+00 TO STA. 872+00 LT.  
S.B. STA. 869+50 TO STA. 871+30 LT.  
S.B. STA. 870+00 TO STA. 871+30 RT.  
S.B. 863+75 - 865+25 RT.  
S.B. 863+75 - 865+25 LT.

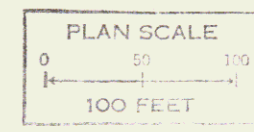
\* TREATED TIMBER CURB ITEM 61635  
S.B. STA. 857+60 TO STA. 861+00 LT.  
S.B. STA. 870+00 TO STA. 871+30 RT.

WOVEN WIRE FENCE WITH STEEL POSTS  
ITEM 62025  
N.B. STA. 858+00 TO STA. 872+00 RT.  
S.B. STA. 857+60 TO STA. 871+30 LT.

EXCELSIOR MATTING ITEM 65415  
S.B. 857+60 - 860+75 LT.  
S.B. 858+00 - 860+00 RT.

DEMOLITION AND DISPOSAL OF BUILDING  
ITEM 20210  
N.B. STA. 871+45 RT. WELL HOUSE 30' RT.

NORTH BOUND		SOUTH BOUND	
Δ	34°-49'-14"	Δ	22°-54'-49"
Dc	1°-00'-00"	Dc	1°-45'-00"
R	5729.58	R	3274.05
T	1796.66	T	663.55
L	3492.04	L	1309.36
E	275.09	E	66.56
BANK .038/11 LT.		BANK .058/11 LT.	



\* DENOTES STAGE 2 ITEMS  
CLARKESON, CLOUGH AND YOKEL  
ALBANY CONSULTING ENGINEERS NEW YORK

STATE OF VERMONT  
DEPARTMENT OF HIGHWAYS

TOWN OF ST. JOHNSBURY

ROUTE No. 1-91 STA. \_\_\_\_\_  
SOUTHBOUND STA. 857+60 TO 871+30  
NORTHBOUND STA. 858+00 TO 872+00

STAGE CONSTRUCTION II

PROJECT No. 1-91-3 (17)  
SHEET (49) OF \_\_\_\_\_

DESIGNED BY C.C.K.  
DRAWN BY J.W.  
CHECKED BY J.W.  
COMPLETED 1/1/58