

CONTROL OF ACCESS IS COMPLETE ON THIS SHEET

WOVEY WIRE FENCE WITH STEEL POSTS  
ITEM 620 25

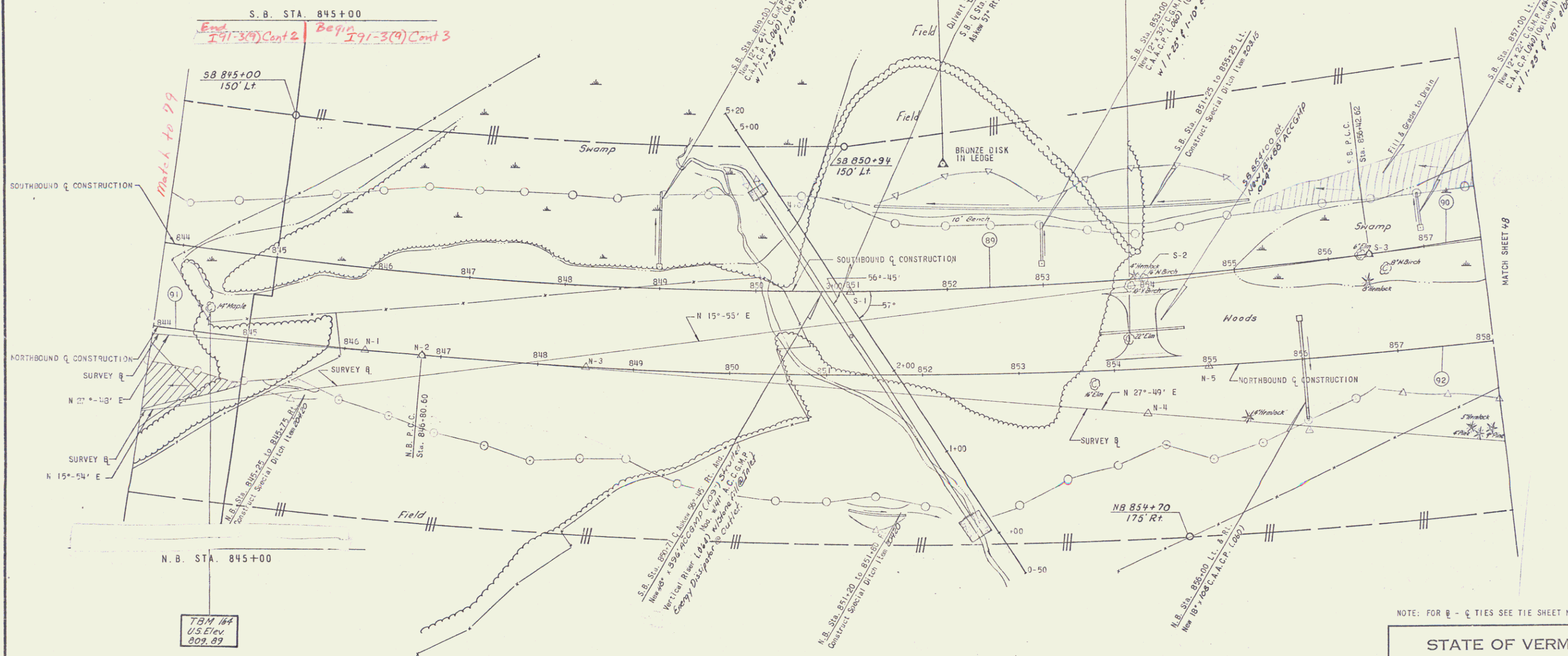
N.P. STA. 845+00 TO STA. 858+00 RT.  
S.B. STA. 845+00 TO STA. 857+60 LT.

Construct Fence Prior to any  
Other Work in These Areas  
NB 845+00 - 850+00 RT.  
SB 845+70 - 858+00 LT.

PROJECT TERMINI  
CONSTRUCTION  
NB Fill 970 C.Y.  
SB Fill 2099 C.Y.

CONSTRUCT 'U' TURN  
SB 854+00 - NB 854+33

VT. GRID



SOUTH 89 BOUND	NORTH 91 BOUND	NORTH 92 BOUND	SOUTH 90 BOUND
Δ 32°-20'-11"	Δ 20°-25'-17"	Δ 34°-45'-14"	Δ 22°-54'-49"
Dc 1°-15'-00"	Dc 1°-15'-00"	Dc 1°-00'-00"	Dc 1°-45'-00"
R 4583.66	R 4583.66	R 5729.58	R 3274.05
T 1328.91	T 825.95	T 1796.66	T 663.55
L 2586.90	L 1634.37	L 3482.04	L 1309.36
E 189.76	E 73.92	E 275.09	E 66.56
BANK .047/H LT.	BANK .042/H LT.	BANK .038/H LT.	BANK .038/H LT.

JUTE MATTING ITEM 62410  
N.B. STA. 850+50 TO STA. 852+70 RT.  
N.B. STA. 855+50 TO STA. 857+00 RT.

\* THREE CABLE GUARD RAIL W LIGHT STEEL POSTS ITEM 62121  
N.P. STA. 848+00 TO STA. 855+52 RT.  
S.B. STA. 845+00 TO STA. 857+60 LT.

TREATED TIMBER CURB ITEM 62410  
S.B. STA. 845+70 TO STA. 857+60 LT.

EXCELSION MATTING ITEM 65415  
NB 845+00 - 851+25 LT.  
NB 853+00 - 856+00 LT.  
SB 851+25 - 857+60 LT.

NOTE: FOR Q - Q TIES SEE THE SHEET NO. 29 & 30

STATE OF VERMONT  
DEPARTMENT OF HIGHWAYS

TOWN OF ST. JOHNSBURY  
ROUTE NO. 1-91 STA.  
SOUTHBOUND 845+00 TO 857+60  
NORTHBOUND 845+00 TO 859+00

STAGE CONSTRUCTION II  
PROJECT NO. 1-91-3 (17)  
SHEET 46 OF

CLARKESON, CLOUGH AND YOKEL  
CONSULTING ENGINEERS  
ALBANY NEW YORK

SURVEYED BY: C.C.F.  
DRAWN BY: J.W.  
CHECKED BY: J.W.  
COMPLETED: 1/25