

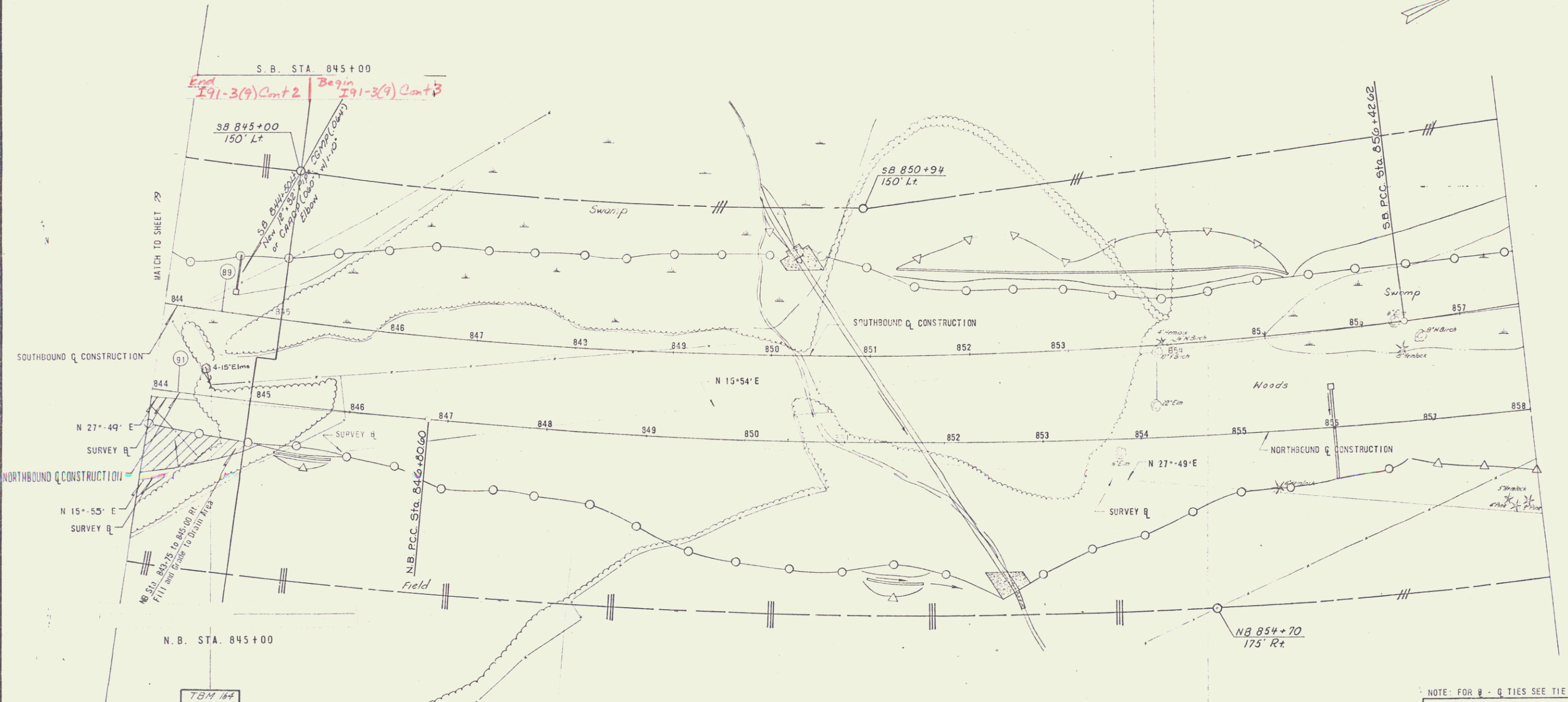
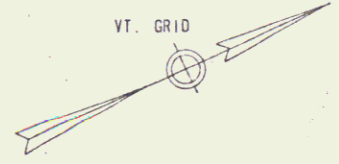
CONTROL OF ACCESS IS COMPLETE ON THIS SHEET.

PROJECT TERMINI QUANTITIES

NB	1382 c.y. FILL
SB	13 c.y. CUT
SB	1878 c.y. FILL

TBM 168
U.S. Elev
728.33

VT. GRID



* THREE CABLE GUARD RAIL W/LIGHT STEEL POSTS
ITEM 621.21
S.B. STA. 847+00 TO 848+00 LT.

WOVEN WIRE FENCE W/STEEL POSTS
ITEM 620.25
S.B. STA. 848+00 TO 849+00 LT.
N.B. STA. 844+00 TO 845+00 RT.

* TREATED TIMBER CURB ITEM 614.35
SB 844+50 - 845+00 LT.

NOTE: FOR B - Q TIES SEE TIE SHEET NO. 32

STATE OF VERMONT
DEPARTMENT OF HIGHWAYS

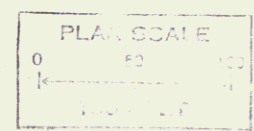
TOWN OF ST. JOHNSBURY

ROUTE NO. 1-91 STA. 845+00

SOUTHBOUND 843+00 TO 845+00
NORTHBOUND 844+00 TO 845+00

STAGE CONSTRUCTION II

PROJECT NO. 1-91-17
SHEET 83



* DENOTES STAGE 2 ITEMS
CLARYSAD, DODD AND YORKE
ALBANY, NEW YORK