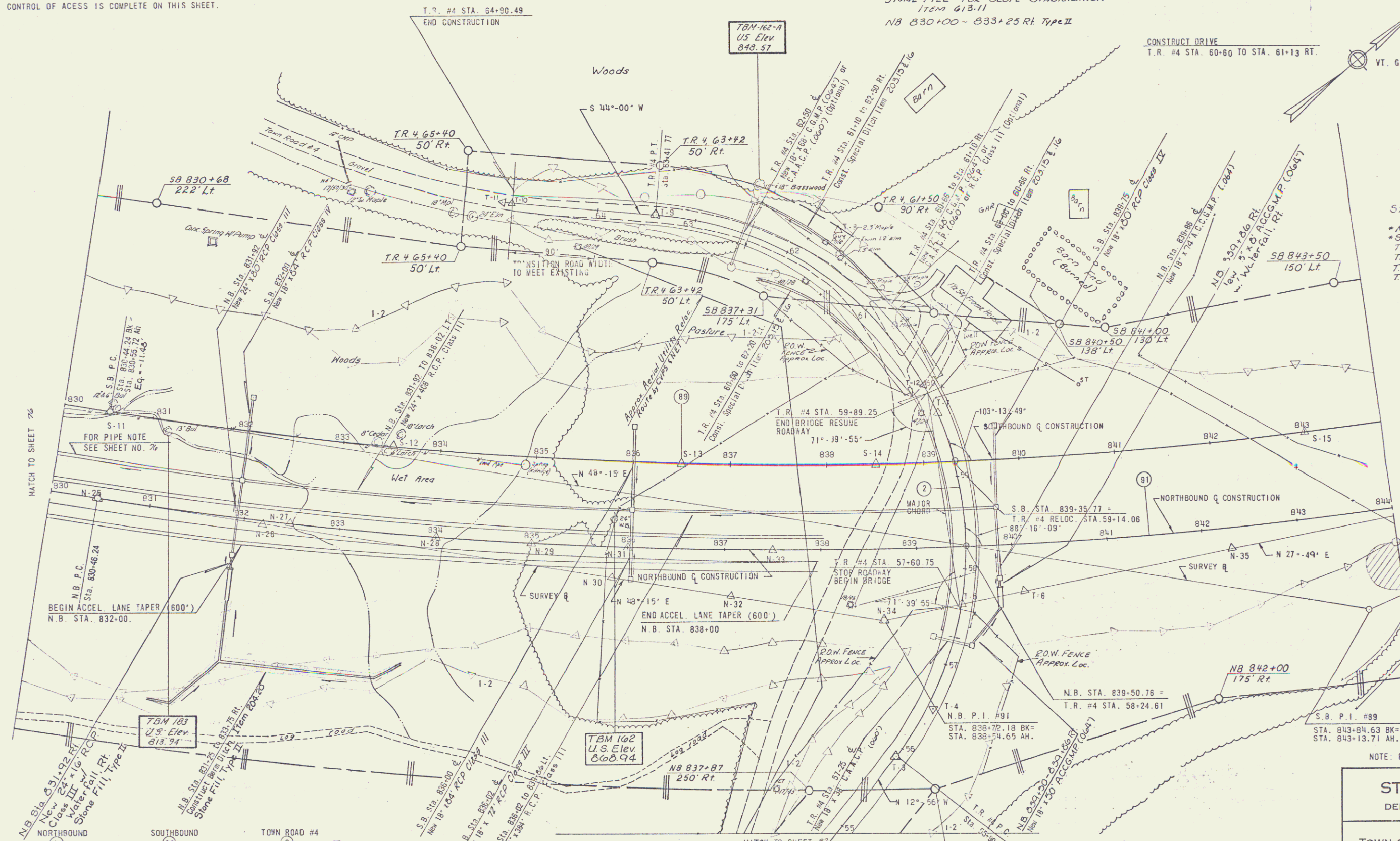


CONTROL OF ACCESS IS COMPLETE ON THIS SHEET.

STONE FILL FOR SLOPE STABILIZATION
ITEM 613.11
NB 830+00 - 833+25 RT Type II

CONSTRUCT DRIVE
T.R. #4 STA. 60+60 TO STA. 61+13 RT.

VT. GRID



APPROACH RAILING
ITEM 617.45
TR 4 57+21 - 57+40 LH
TR 4 57+21 - 57+40 RH
TR 4 60+01 - 60+28 LH
TR 4 60+01 - 60+28 RH

STANDARD STEEL BEAM GUARD RAIL
W/ STEEL POSTS ITEM 621.26
*NB 830+50 - 840+00 LH
*SB 839+00 - 840+50 RH
TR 4 56+71 - 57+21 LH
TR 4 56+71 - 57+21 RH
TR 4 60+28 - 62+78 LH
TR 4 60+28 - 62+78 RH

DRILLING & BLASTING OF
SOLID ROCK SUBGRADE
ITEM 204.10
NB 830+00 - 843+50
SB 830+00 - 843+25
TR 4 56+00 - 57+50
TR 4 59+95 - 61+50

NORTHBOUND		SOUTHBOUND		TOWN ROAD #4	
Station	Point	Station	Point	Station	Point
830+00	PC	830+00	PT	830+00	PC
830+25	PT	830+25	PC	830+25	PT
830+50	PT	830+50	PC	830+50	PT
831+00	PT	831+00	PC	831+00	PT
831+25	PT	831+25	PC	831+25	PT
831+50	PT	831+50	PC	831+50	PT
832+00	PT	832+00	PC	832+00	PT
832+25	PT	832+25	PC	832+25	PT
832+50	PT	832+50	PC	832+50	PT
833+00	PT	833+00	PC	833+00	PT
833+25	PT	833+25	PC	833+25	PT
833+50	PT	833+50	PC	833+50	PT
834+00	PT	834+00	PC	834+00	PT
834+25	PT	834+25	PC	834+25	PT
834+50	PT	834+50	PC	834+50	PT
835+00	PT	835+00	PC	835+00	PT
835+25	PT	835+25	PC	835+25	PT
835+50	PT	835+50	PC	835+50	PT
836+00	PT	836+00	PC	836+00	PT
836+25	PT	836+25	PC	836+25	PT
836+50	PT	836+50	PC	836+50	PT
837+00	PT	837+00	PC	837+00	PT
837+25	PT	837+25	PC	837+25	PT
837+50	PT	837+50	PC	837+50	PT
838+00	PT	838+00	PC	838+00	PT
838+25	PT	838+25	PC	838+25	PT
838+50	PT	838+50	PC	838+50	PT
839+00	PT	839+00	PC	839+00	PT
839+25	PT	839+25	PC	839+25	PT
839+50	PT	839+50	PC	839+50	PT
840+00	PT	840+00	PC	840+00	PT
840+25	PT	840+25	PC	840+25	PT
840+50	PT	840+50	PC	840+50	PT
841+00	PT	841+00	PC	841+00	PT
841+25	PT	841+25	PC	841+25	PT
841+50	PT	841+50	PC	841+50	PT
842+00	PT	842+00	PC	842+00	PT
842+25	PT	842+25	PC	842+25	PT
842+50	PT	842+50	PC	842+50	PT
843+00	PT	843+00	PC	843+00	PT
843+25	PT	843+25	PC	843+25	PT
843+50	PT	843+50	PC	843+50	PT
844+00	PT	844+00	PC	844+00	PT

WOVEN WIRE FENCE W/ STEEL POSTS
ITEM 620.25
S.B. STA. 830+00 TO TR 4 59+90 LH
T.R. #4 59+90 RT - SB 843+80 LH
N.B. STA. 830+00 TO TR 4 57+60 LH
TR 4 57+60 RT TO NB 844+00 RH

Construct Fence Prior to
Any Other Work in this Area
SB 840+00 - 845+00 LH
NB 840+00 - 845+00 RH

STATE OF VERMONT
DEPARTMENT OF HIGHWAYS

TOWN OF ST. JOHNSBURY
ROUTE No. 1-91 STA. _____
SOUTHBOUND STA. 830+00 TO STA. 843+00
NORTHBOUND STA. 830+00 TO STA. 844+00
T.R. #4 RELOC. STA. 54+90 TO STA. 64+90.49

STAGE CONSTRUCTION II
PROJECT No. 1-91-3 (17)
SHEET 29 OF _____

TOWN ROAD #4 IS TO BE BUILT IN ITS
ENTIRETY DURING STAGE I CONSTRUCTION.

CLARKESON, FLOCH AND YOKEL
CONSULTING ENGINEERS
ALBANY NEW YORK

DESIGNED BY: C.L.F.
CHECKED BY: J.C.
DATE: 11/1/77
COMPLETED: 11/1/77