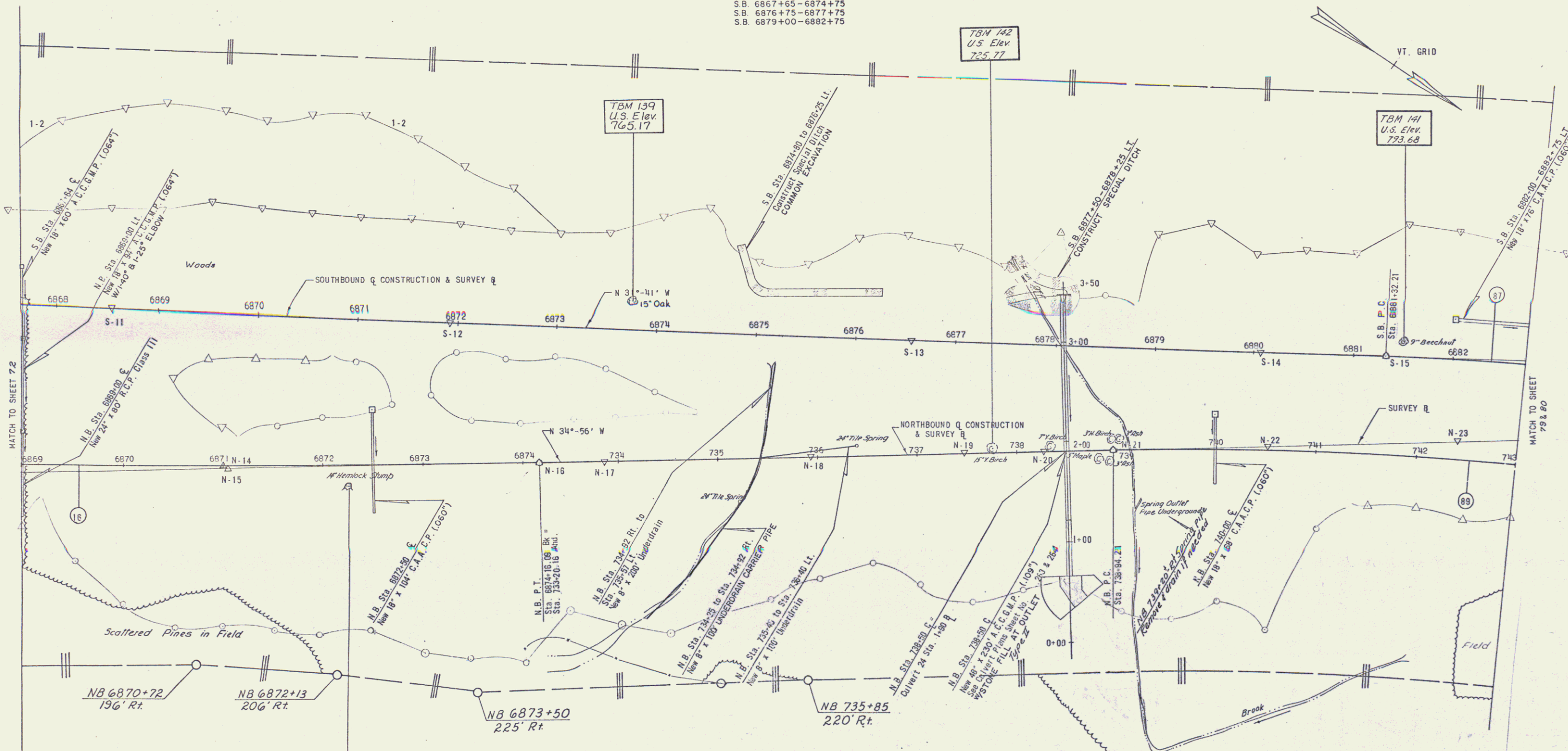


*THREE CABLE GUARD RAIL W/LIGHT STEEL POSTS
S.B. STA. 6868+31 TO 6882+75 RT.

CONTROL OF ACCESS IS COMPLETE ON THIS SHEET

DRILLING AND BLASTING OF SOLID ROCK SUBGRADE
N.B. 6869+00 - 6870+25
N.B. 740+25 - 743+00
S.B. 6867+65 - 6874+75
S.B. 6876+75 - 6877+75
S.B. 6879+00 - 6882+75



NORTHBOUND		NORTHBOUND		SOUTHBOUND	
16		88		87	
Δ	= 8°-15'-00"	Δ	= 26°-40'-43"	Δ	= 23°-25'-32.5"
Dc	= 0°-22'-30"	Dc	= 1°-45'-00"	Dc	= 2°-00'-00"
R	= 15,278.88	R	= 3274.05'	R	= 2864.79'
T	= 1101.91	T	= 776.32	T	= 593.94'
L	= 2200.00'	L	= 1524.49'	L	= 1171.28'
E	= 39.58'	E	= 90.78'	E	= 60.92'
Bank .021/1/1		Bank .022/1/1		Bank .020/1/1	

JUTE MATTING
N.B. STA. 739-00 TO STA. 740-00 LT.
N.B. STA. 6872-50 TO STA. 738-00 LT.

STONE FILL, TYPE II
S.B. STA. 6874+80 TO STA. 6876+25 LT.
S.B. STA. 6877+50 TO STA. 6878+25 LT.

WOVEN WIRE FENCE W/STEEL POSTS
N.B. STA. 6869+00 TO STA. 743-00 RT.
S.B. STA. 6867+65 TO STA. 6882+75 LT.

*STANDARD STEEL BEAM GUARD RAIL W/STEEL POSTS
TYPE II, (6'-3" SPACING)
S.B. STA. 6877-50 TO STA. 6879-00 LT.
N.B. STA. 6869+00 TO 742+29 RT.

NOTE: FOR R - Q TIES SEE TIE SHEET NO. 42

STATE OF VERMONT
DEPARTMENT OF HIGHWAYS

TOWN OF ST. JOHNSBURY

ROUTE NO. 1-91 STA

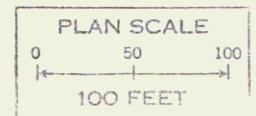
SOUTHBOUND STA. 6867+65 TO 6882+75

NORTHBOUND STA. 6869+00 TO 743-00

STAGE CONSTRUCTION II

PROJECT NO. 1-91-3 (17)

SHEET 75 OF



* DENOTES STAGE 2 ITEMS

CLARKESON, CLOUGH AND YOKEL
CONSULTING ENGINEERS
ALBANY NEW YORK

DRAWN BY: J.C.K.
 CHECKED BY: J.C.K.
 TRACED BY: J.C.K.
 COMPUTED BY: J.C.K.