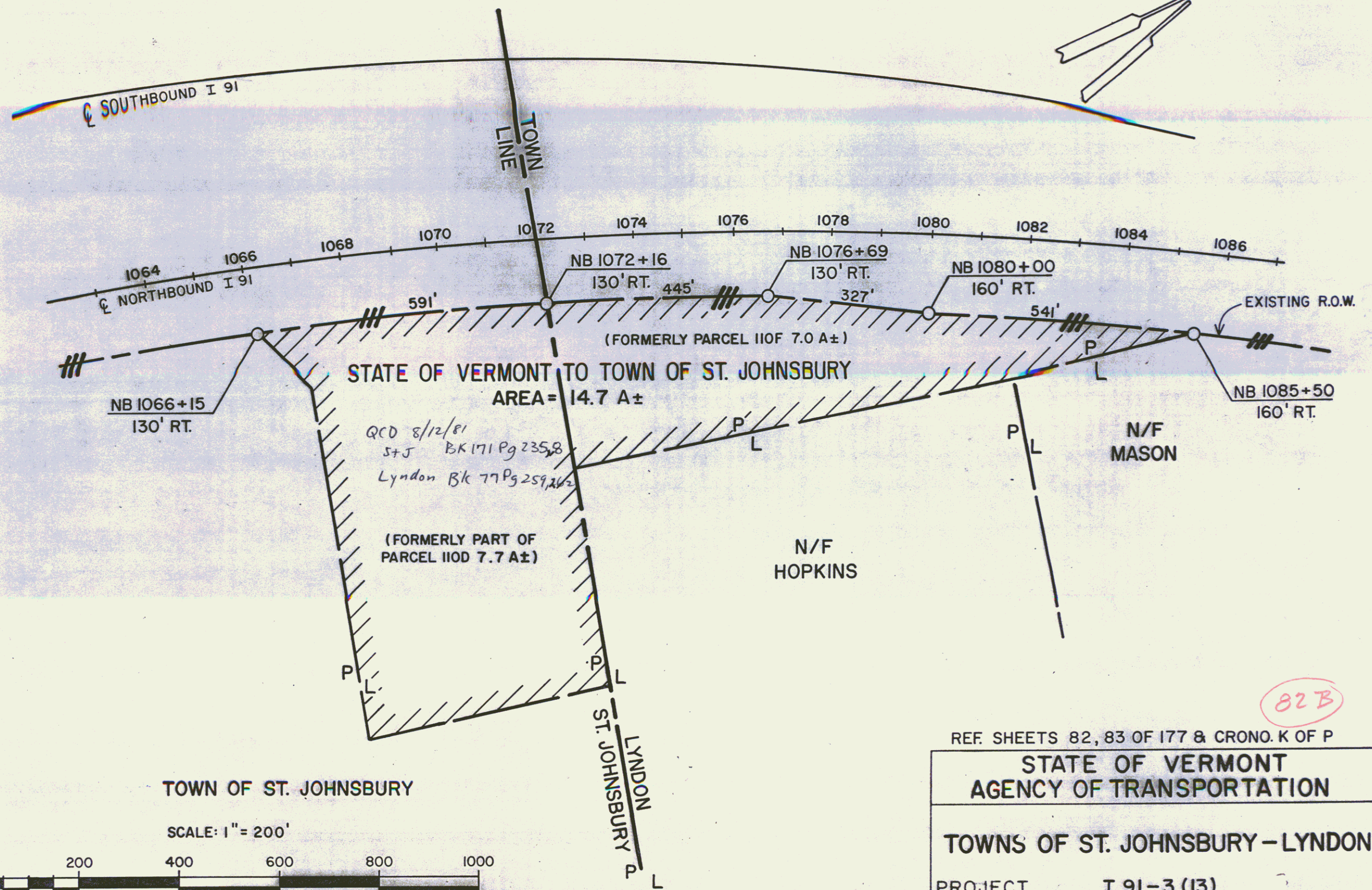


ACQUIRED AS PARCEL 110F & PART OF 110D FROM CLYDE R. & RUTH E. WALKER
 BY W.D. DATED 4/14/71 RECORDED 4/20/71 IN BK. 55 PG. 202 IN THE LYNDON
 LAND RECORDS AND W.D. DATED 4/15/71 RECORDED 4/20/71 IN BK. 139 PGS.
 561 - 563 IN THE ST. JOHNSBURY LAND RECORDS



STATE OF VERMONT TO TOWN OF ST. JOHNSBURY
 AREA = 14.7 A±

QCD 8/12/81
 S+J BK 171 Pg 235,8
 Lyndon Bk 77 Pg 259,162
 (FORMERLY PART OF
 PARCEL 110D 7.7 A±)

N/F
 MASON

N/F
 HOPKINS

TOWN OF ST. JOHNSBURY

SCALE: 1" = 200'



REF. SHEETS 82, 83 OF 177 & CRONO. K OF P

STATE OF VERMONT
 AGENCY OF TRANSPORTATION

TOWNS OF ST. JOHNSBURY - LYNDON

PROJECT I 91-3 (13)
 APPROX. SCALE 1"=200' DATE 12/8/80 DRAWN BY B.A.M.

82B

61