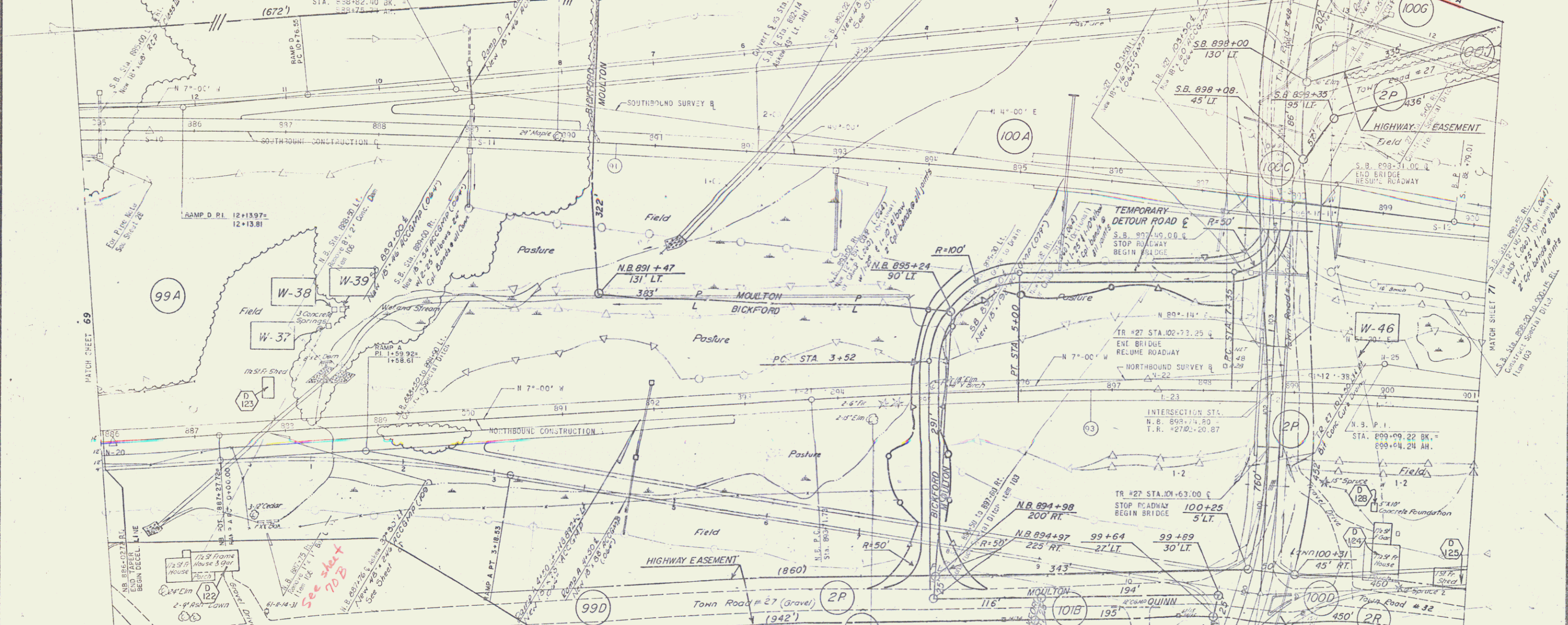


NORTH (63) - CURVE  
 Δ 12°-00'-00"  
 DC 1°-00'-00"  
 T 5729.58  
 L 1250.00  
 E 34.26  
 BANK 3/16" FT. RT.

SOUTH (71) - CURVE  
 Δ 11°-00'-00"  
 DC 0°-30'-00"  
 T 11459.16  
 L 1103.39  
 E 53.00  
 BANK 1/4" FT. RT.

RAMP D CURVE DATA  
 Δ 5°29'36"  
 DC 1.999923  
 H 2864.10  
 T 271.42  
 E 3.28  
 BANK 3/8 IN 12"



**RAMP A CURVE DATA**  
 Δ 12°44'28" RT  
 DC 4"  
 H 1432.40  
 T 159.92  
 L 318.55  
 E 8.90  
 BANK 3/4" IN 12"

**CHAIN LINK FENCE (6 FT. HIGH)**  
 N.B. STA. 895+00 RT. TO T.P. #27 STA. 1+63 LT.  
 T.P. #27 STA. 1+63 RT. TO N.B. STA. 961+00 RT.  
 S.B. STA. 897+26 TO STA. 897+47 LT.  
 S.B. STA. 898+24 TO STA. 900+15 LT.  
 T.P. #27 STA. 2+63 LT. TO S.B. STA. 897+50 RT.  
 T.P. #27 STA. 2+63 RT. TO S.B. STA. 898+27 RT.  
 DEMOLITION AND REMOVAL OF BUILDINGS.  
 ITEM 506  
 N.B. STA. 897+80 TO 9 STORY FRAME SHED 31' LT.

**\*THREE CABLE GUARD RAIL W/LIGHT STEEL POSTS**  
 ITEM 538  
 N.B. STA. 886+00 TO STA. 895+77 RT.  
 S.B. STA. 897+24 TO STA. 898+43 RT.  
 S.B. STA. 889+29 TO STA. 896+60 LT.

**ITEM 572 BRIDGE RAILING (FOR BRIDGE APPROACHES)**  
 S.B. STA. 896+16 TO STA. 897+29 RT.  
 S.B. STA. 895+13 TO STA. 897+26 LT.  
 S.B. STA. 899+53 TO STA. 900+79 RT.  
 S.B. STA. 898+50 TO STA. 900+15 LT.

**RIF RAP (HEAVY TYPE) ITEM 513-A MATCH TO SHEET 69B**  
 N.B. STA. 887+95 TO 888+25 RT.  
 N.B. STA. 888+23 TO 888+51 LT.  
 S.B. STA. 891+25 TO 891+63 RT.  
 S.B. STA. 892+84 TO 893+19 LT.

**TWO CABLE GUARD RAIL, ITEM 541**  
 T.P. #27 STA. 1+66 TO STA. 1+54 RT.  
 T.P. #27 STA. 1+56 TO STA. 1+54 LT.  
 T.P. #27 STA. 2+93 TO STA. 3+63 RT.  
 T.P. #27 STA. 2+83 TO STA. 3+63 LT.

**PROPERTY LINE FENCE WITH STEEL POSTS**  
 ITEM 503-11  
 S.B. STA. 884+80 TO STA. 897+26 LT.

**STONE FILL SLOPE PROTECTION (HEAVY TYPE)**  
 ITEM 511  
 N.B. STA. 887+25 TO STA. 888+20 RT.  
 S.B. STA. 891+05 TO STA. 891+21 RT.

**RAMP A POT 0+0000**  
 TH 27 POST 100+00 00+  
 RAMP A POT 11+45 40+  
 RAMP B POT 0+0000

**POOR ORIGINAL COPY**  
 CLARKSON, CLOUGH AND YOKEL  
 ALBANY ENGINEERS  
 NEW YORK

STATE OF VERMONT  
 DEPARTMENT OF HIGHWAYS

TOWN OF ST. JAMESBURY  
 ROUTE NO. 1-91 STA. \_\_\_\_\_  
 SOUTHBOUND 884+80 TO 892+15  
 NORTHBOUND 886+00 TO 901+00  
 T.P. #27 0+00 TO 5+25  
 CONTRACT #3  
 STAGE CONSTRUCTION I  
 PROJECT NO. 1-91-3(9)  
 SHEET 70 OF \_\_\_\_\_