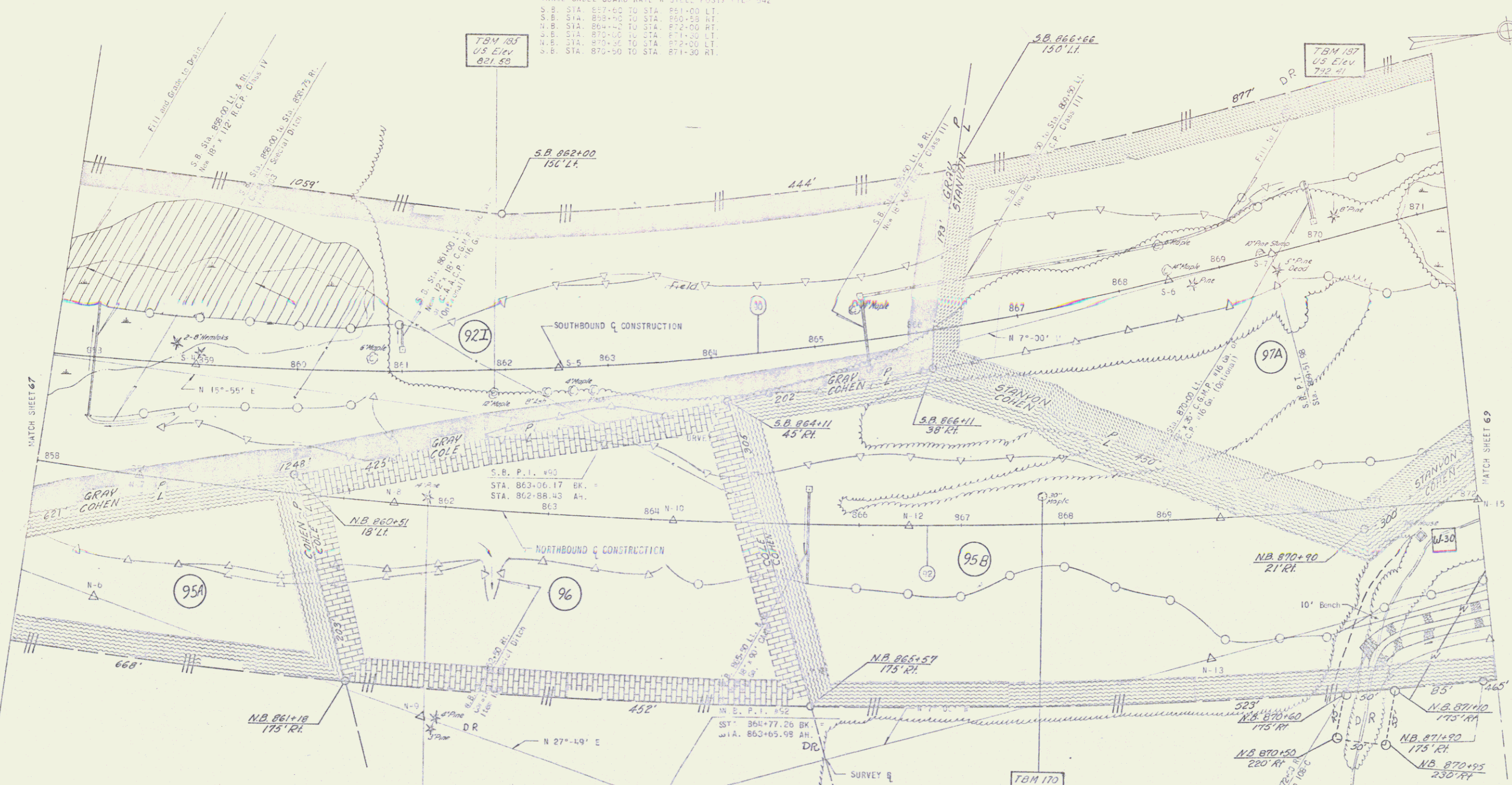


THREE LACLE GUARD RAIL + STEEL PULTS ITEM 542
 S.B. STA. 857+00 TO STA. 861+00 LT.
 S.B. STA. 861+00 TO STA. 865+00 RT.
 S.B. STA. 865+00 TO STA. 870+00 RT.
 S.B. STA. 870+00 TO STA. 871+30 RT.



*JUTE MATTING ITEM 623
 N.B. STA. 869+00 TO STA. 872+00 LT.
 S.B. STA. 869+50 TO STA. 871+30 LT.
 S.B. STA. 870+00 TO STA. 871+30 RT.

*BITUMINOUS CONCRETE CURB, ITEM 555
 S.B. STA. 857+10 TO STA. 861+00 LT.
 S.B. STA. 870+00 TO STA. 871+30 LT.
 N.B. STA. 871+00 TO STA. 872+00 RT.

STONE FILL FOR SLOPE PROTECTION (LIGHT TYPE)
 ITEM 512
 N.B. STA. 870+85 TO STA. 872+00 RT.

NORTH BOUND		SOUTH BOUND	
Δ	34'-00"-14"	Δ	22'-00"-00"
Δc	1'-00"-00"	Δ	1'-00"-00"
R	5729.58	R	3274.052
T	1796.66	T	663.45
L	3482.04	L	1309.26
E	275.09	E	66.56
BANK	5/16"/FT. LT.	BANK	5/8"/FT. LT.

POOR ORIGINAL COPY

N.B. STA. 872+00 END PIPE - QUANTITIES BEGIN ROADWAY QUANTITIES CONSTRUCT 6' WIDE CHANNEL FROM STA. 870+85 TO STA. 872+00 RT.
 ITEM 106-C UNCLASSIFIED CHANNEL EXCAVATION
 ITEM 512 STONE FILL FOR SLOPE PROTECTION (LIGHT TYPE).

* DENOTES STAGE 2 ITEMS
 CLARKESON, CLOUGH AND YOKEL
 ALBANY CONSULTING ENGINEERS NEW YORK

STATE OF VERMONT
 DEPARTMENT OF HIGHWAYS

TOWN OF ST. JOHNSBURY

ROUTE No. 1-91 STA. _____

SOUTHBOUND STA. 857+60 TO 871+30
 NORTHBOUND STA. 858+00 TO 872+00

CONTRACT # 3

STAGE CONSTRUCTION 1

PROJECT NO. 1-91-3(3)
 SHEET 68 OF 177