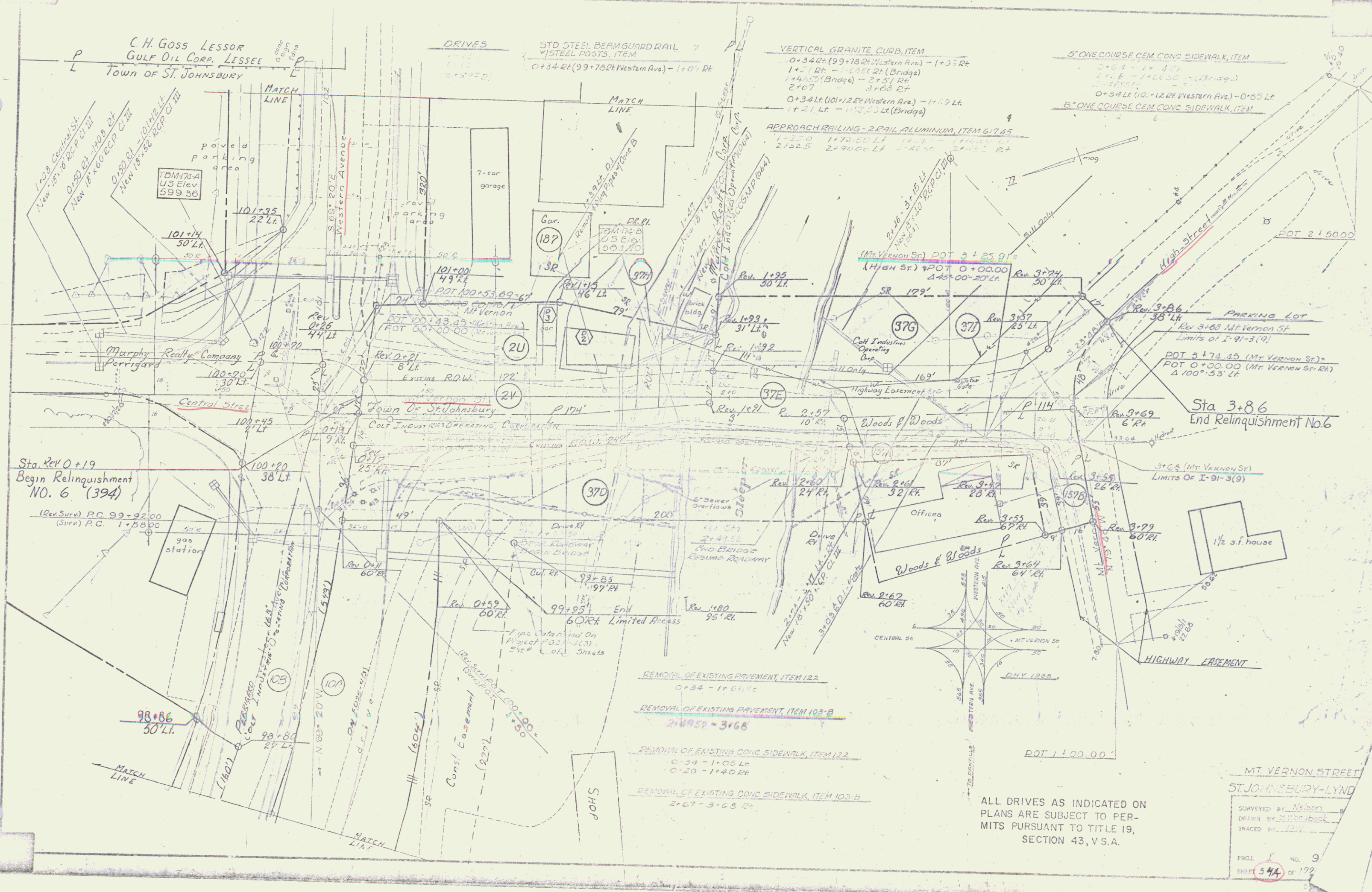


C.H. GOSS LESSOR  
GULF OIL CORP. LISSEE  
TOWN OF ST. JOHNSBURY



- REMOVAL OF EXISTING PAVEMENT ITEM 122  
0+34 - 1+01.00
- REMOVAL OF EXISTING PAVEMENT ITEM 102-B  
2+49.27 - 3+66
- REMOVAL OF EXISTING CONC. SIDEWALK ITEM 122  
0+34 - 1+06.00
- REMOVAL OF EXISTING CONC. SIDEWALK ITEM 103-B  
2+67 - 3+68.00

ALL DRIVES AS INDICATED ON PLANS ARE SUBJECT TO PERMITS PURSUANT TO TITLE 19, SECTION 43, V.S.A.

MT. VERNON STREET  
ST. JOHNSBURY-LYND  
SURVEYED BY Nelson  
DRAWN BY Miller/Book  
TRACED BY J.W.  
PROJ. NO. 9  
SHEET 54A OF 172