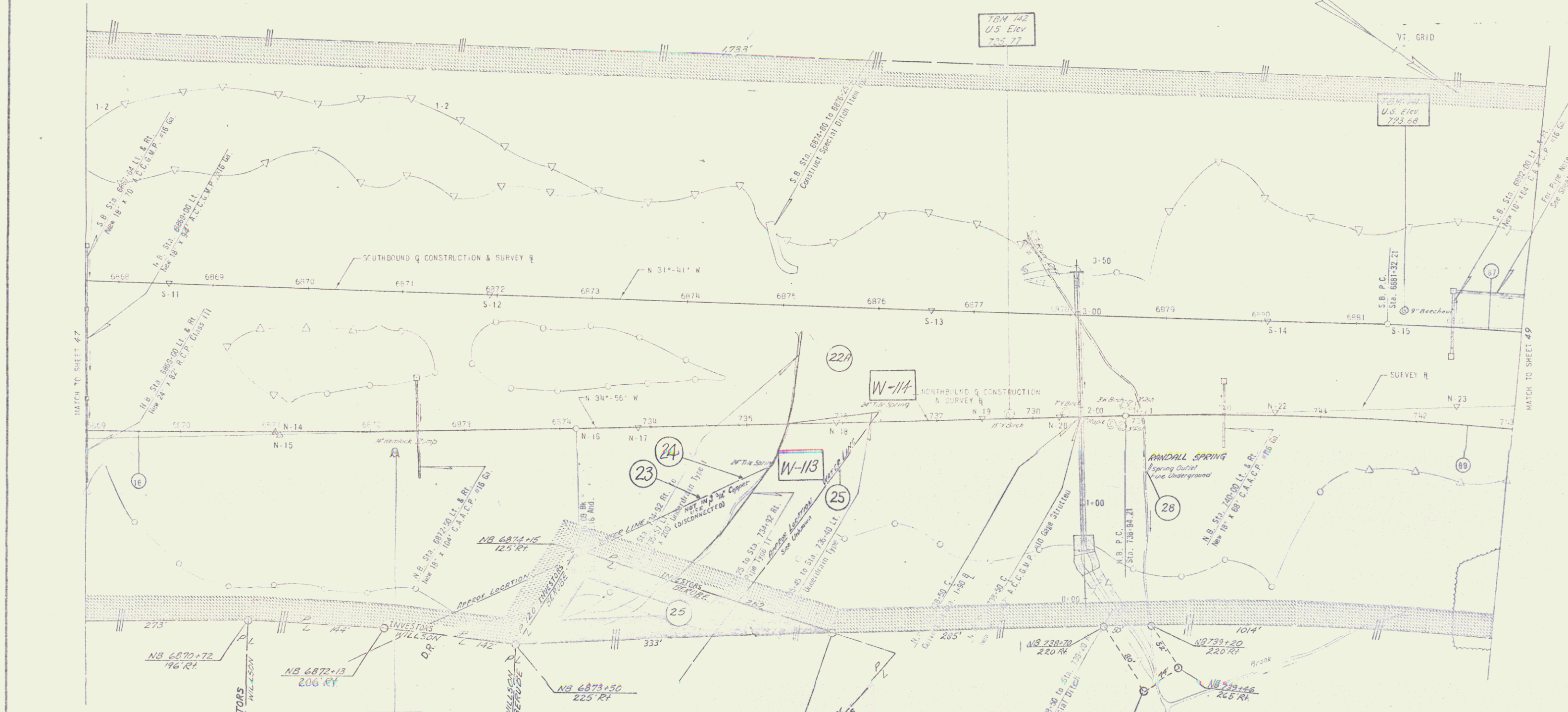


POOR ORIGINAL COPY



NORTHBOUND		NORTHBOUND		SOUTHBOUND	
16	17	18	19	20	21
Δ = 8°-15'-00"	Δ = 26°-40'-43"	Δ = 23°-25'-32.5"	Δ = 2°-00'-00"	Δ = 23°-25'-32.5"	Δ = 2°-00'-00"
Dc = 0°-22'-30"	Dc = 1°-45'-00"	Dc = 2°-00'-00"	Dc = 2°-00'-00"	Dc = 2°-00'-00"	Dc = 2°-00'-00"
R = 13,278.88	R = 274.00'	R = 2964.79	R = 2964.79	R = 2964.79	R = 2964.79
T = 1101.91	T = 74.32	T = 392.94'	T = 392.94'	T = 392.94'	T = 392.94'
L = 2208.00'	L = 1524.49'	L = 117.26'	L = 117.26'	L = 117.26'	L = 117.26'
C = 39.68'	C = 30.75'	C = 80.92'	C = 80.92'	C = 80.92'	C = 80.92'
BANK = 1.4' FT. LT.	BANK = 5.6' FT. RT.	BANK = 11.1' FT. RT.	BANK = 11.1' FT. RT.	BANK = 11.1' FT. RT.	BANK = 11.1' FT. RT.

NOTE: FOR B - Q TIES SEE THE SHEET NO.

STATE OF VERMONT
DEPARTMENT OF HIGHWAYS

TOWN OF ST. JOHNSBURY
ROUTE No. 1-91 STA.
SOUTHBOUND STA. 6967+65 TO 6990+75
NORTHBOUND STA. 6967+00 TO 743+00

CONTRACT 71
STAGE CONSTRUCTION I

PROJECT No. 1-91-373
SHEET 48 OF 48

DESIGNED BY CLARKSON, FLETCHER AND YOKEL
ALBANY, NEW YORK