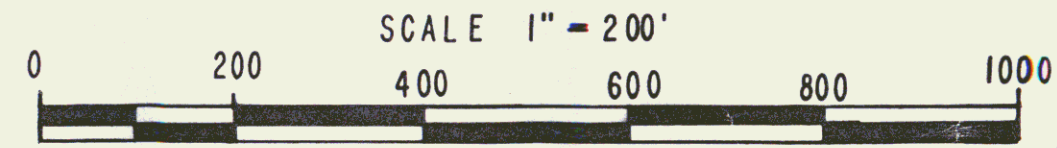
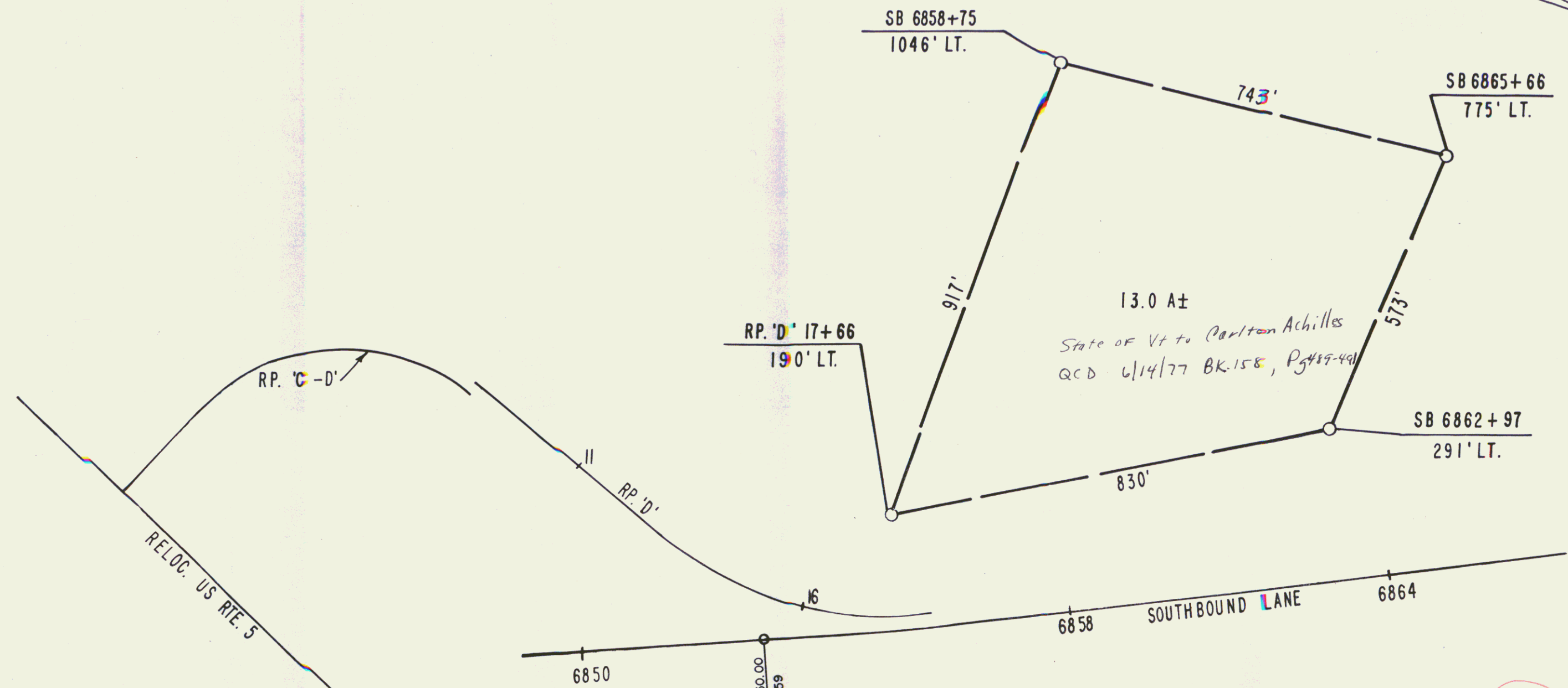
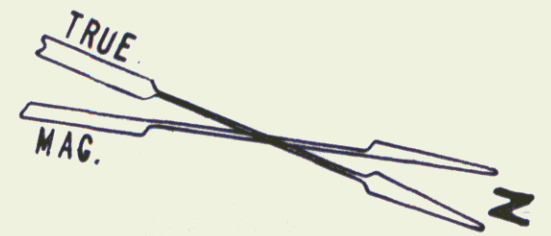


ACQUIRED AS PART OF PARCEL 19 FROM WALTER C. & GRACE Z. BRADLEY
 BY W.D. RECORDED OCT. 3, 1969, BK. 135, PGS. 574-575; TN. OF ST. JOHNSBURY



STATE OF VERMONT DEPT. OF HIGHWAYS		
TOWN OF ST. JOHNSBURY		
PROJECT ST. JOHNSBURY - LYNDON 191-3 (13)		
APPROX. SCALE 1" = 200'	DATE 7-18-77	DRAWN BY KDP

47B

13