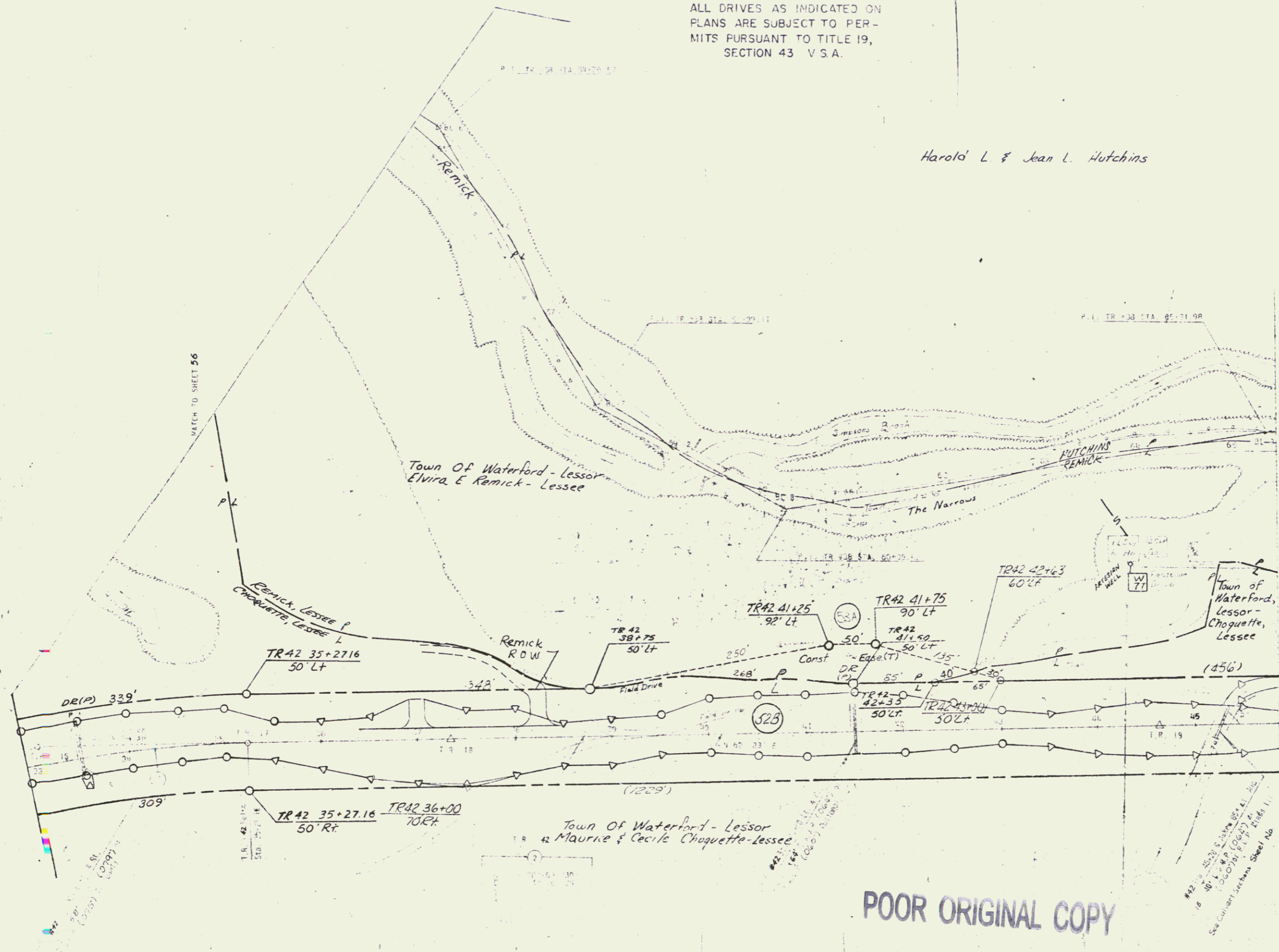


ALL DRIVES AS INDICATED ON PLANS ARE SUBJECT TO PERMITS PURSUANT TO TITLE 19, SECTION 43 V.S.A.

Harold L. & Jean L. Hutchins



CONSTRUCT DRIVE
 T.R. 42 STA. 44.65 LT
 35+29 LT.

T.R. 42 S.D. OF BUILT IN 118 FEET
 DURING STAGE 1 CONSTRUCTION

NOTE: FOR B.C. TIES SEE T.E. SHEET NO. 75-86

STATE OF VERMONT	
DEPARTMENT OF HIGHWAYS	
TOWN OF <i>Barnet - St. Johnsbury</i>	
ROUTE NO. <i>101</i>	STA. <i>42</i>
SHEET NO. <i>57</i>	
Sect. <i>21</i>	

POOR ORIGINAL COPY