

CONTROL OF ACCESS IS COMPLETE ON THIS SHEET.

TBM 87  
US Elev  
716.45

Standard Shell Being Graded with  
Steel Posts, Item 621.64  
S.B. STA. 6691+20 TO STA. 6701+00 LT.  
N.B. STA. 6697+50 TO STA. 6692+00 LT.

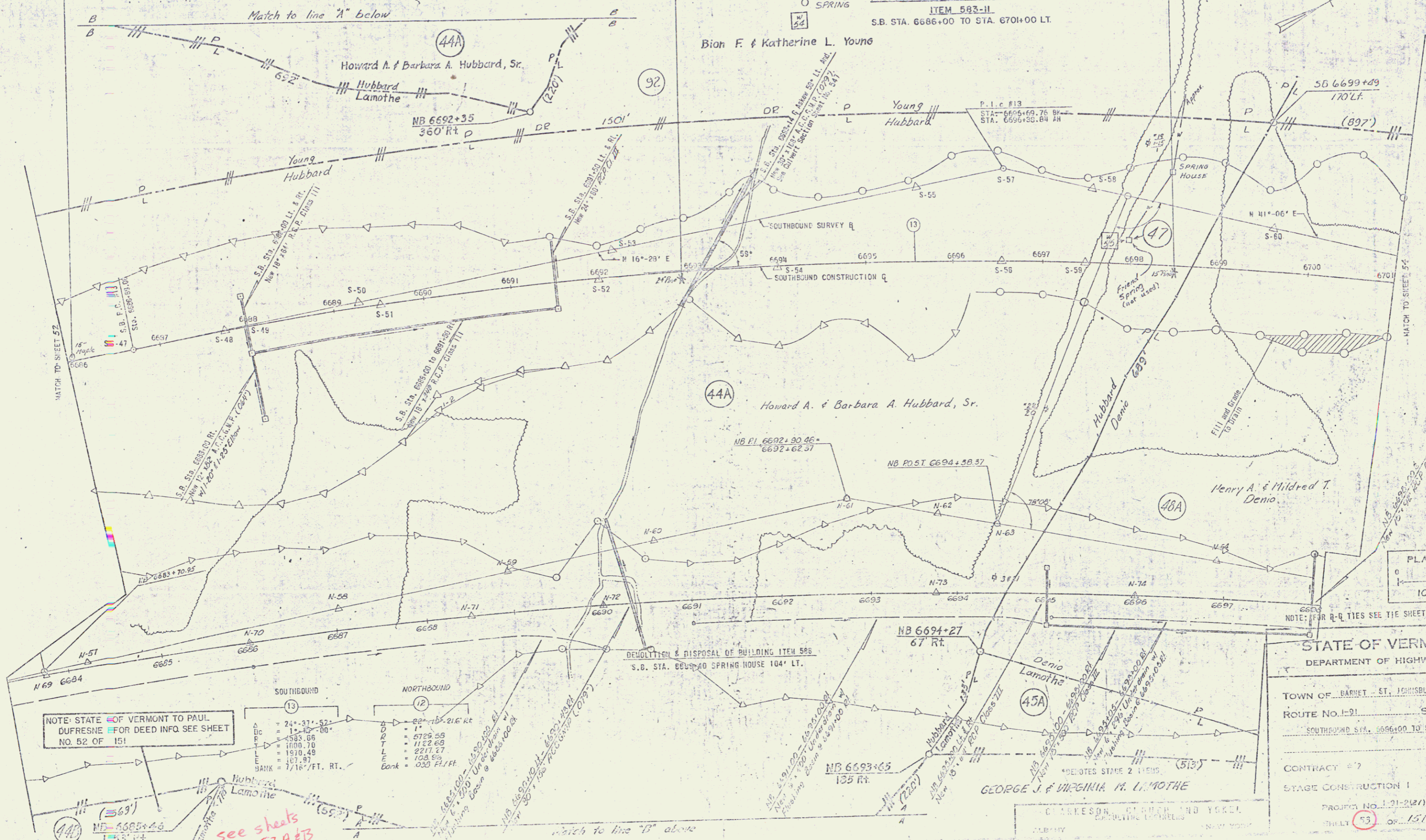
Drilling & Blasting of Solid  
Rock Subgrade Item 206.10  
SB 6687+00 - 6693+00

TBM 84  
US Elev  
667.91

REINFORCED CONCRETE CURB ITEM 555  
S.B. STA. 6697+50 TO STA. 6701+00 RT.

JUTE MATTING ITEM 623  
S.B. STA. 6686+00 TO STA. 6701+00 RT.  
PROPERTY LINE FENCE W/STEEL POSTS  
ITEM 583-II  
S.B. STA. 6686+00 TO STA. 6701+00 LT.

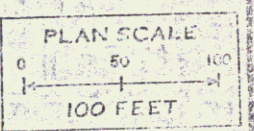
TBM 71  
US Elev  
623.95



NOTE: STATE OF VERMONT TO PAUL  
DUPRESNE FOR DEED INFO SEE SHEET  
NO. 52 OF 151

	SOUTHBOUND	NORTHBOUND
Δ	24'-37'-52"	22'-15'-21 1/2" RT
BC	1'-10'-00"	1'-10'-00"
DC	583.66	5725.58
T	1000.70	1122.68
L	1870.48	2217.27
E	107.97	108.89
BANK	7/16" / FT. RT.	0.30 FT. / FT.

see sheets  
53A & B



STATE OF VERMONT  
DEPARTMENT OF HIGHWAYS

TOWN OF BARNET - ST. JOHNSBURY  
ROUTE NO. 121 - STA. 6696+00 TO STA. 6701+00

CONTRACT # 97  
STAGE CONSTRUCTION I  
PROJECT NO. 121-2(2) - 1997  
SHEET 151 OF 151