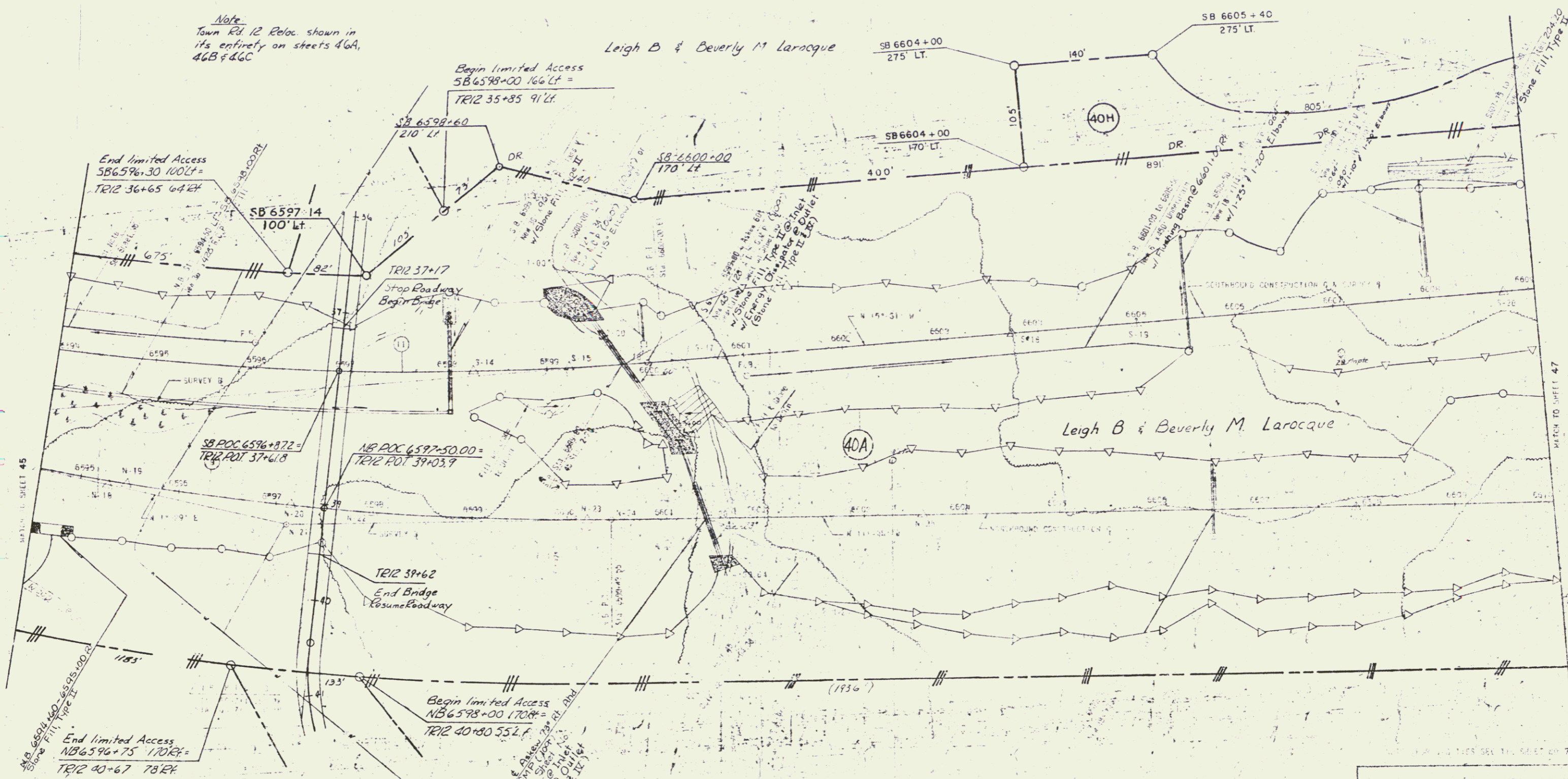


Note:  
Town Rd. 12 Reloc. shown in  
its entirety on sheets 46A,  
46B & 46C

Leigh B & Beverly M Larocque



End limited Access  
NB 6596+75 170' LT =  
TR12 40+67 78' RT

Begin limited Access  
NB 6598+00 170' LT =  
TR12 40+80 55' LT

Note:  
Town Rd. 12 Reloc. shown in  
its entirety on sheets 46A,  
46B & 46C

Leigh B & Beverly M Larocque

ALL DRIVES AS INDICATED ON  
PLANS ARE SUBJECT TO PER-  
MITS PURSUANT TO TITLE 19,  
SECTION 43, V. S. A.

STATE OF VERMONT  
DEPARTMENT OF HIGHWAYS  
TOWN OF St. Johnsbury  
ROUTE NO. 101 STA. 101  
SECTION 43, V. S. A.

POOR ORIGINAL COPY

46

JAN 10 1984

33