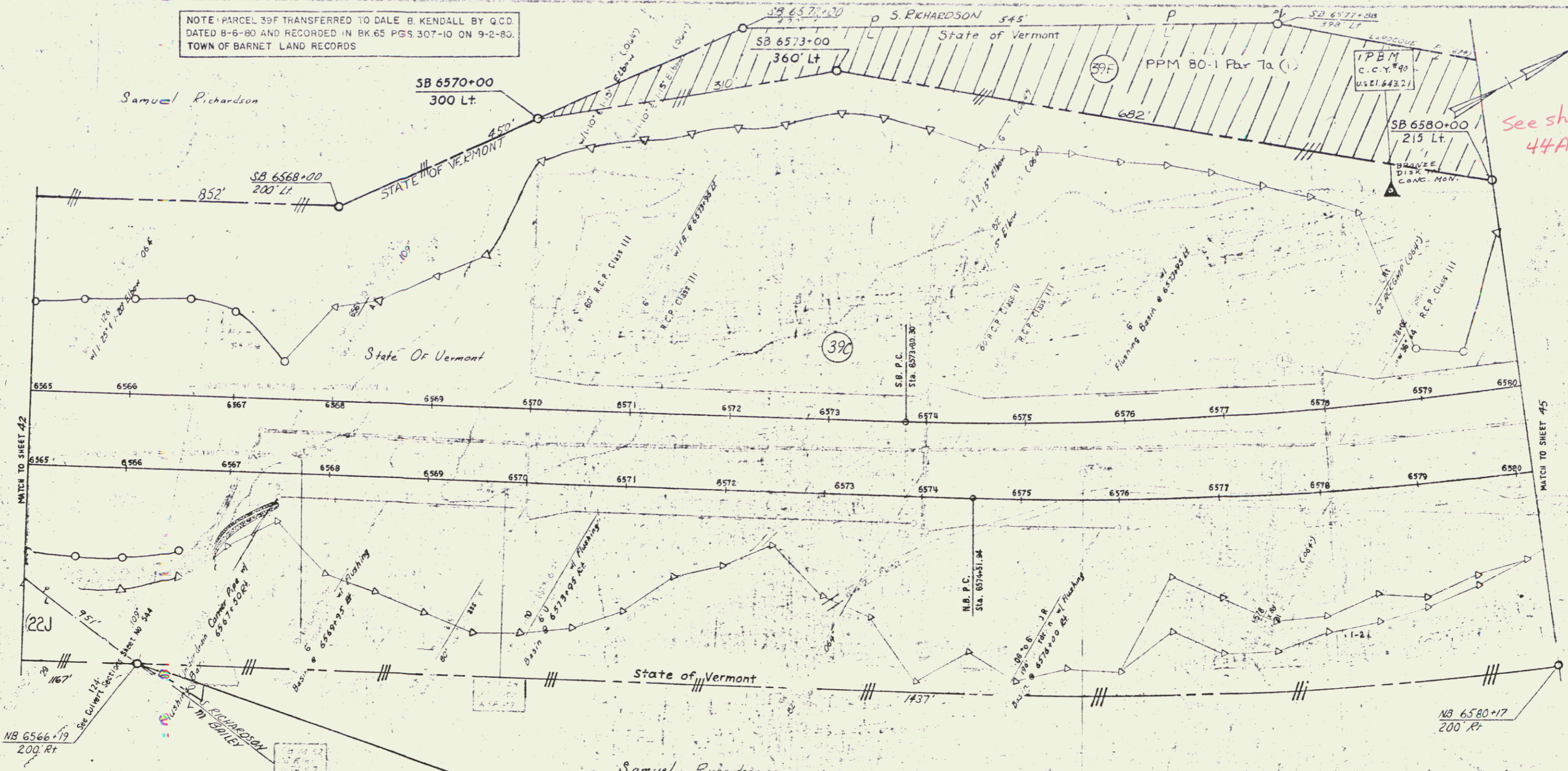


NOTE: PARCEL 39F TRANSFERRED TO DALE B. KENDALL BY Q.C.D. DATED 8-6-80 AND RECORDED IN BK. 65 PGS. 307-10 ON 9-2-80. TOWN OF BARNET LAND RECORDS



See sheet 44A

Margaret W. Bailey

NB 6566+19 200' Rt.  
END R.D.W. PROJECT  
I91-2 (21) Sect. I  
QI091-2 (47) Sect. I

STATE OF VERMONT  
DEPARTMENT OF HIGHWAYS  
TOWN OF BARNET - St. Johnsbury

PROJECT NO. 091-2(21)  
SHEET 44