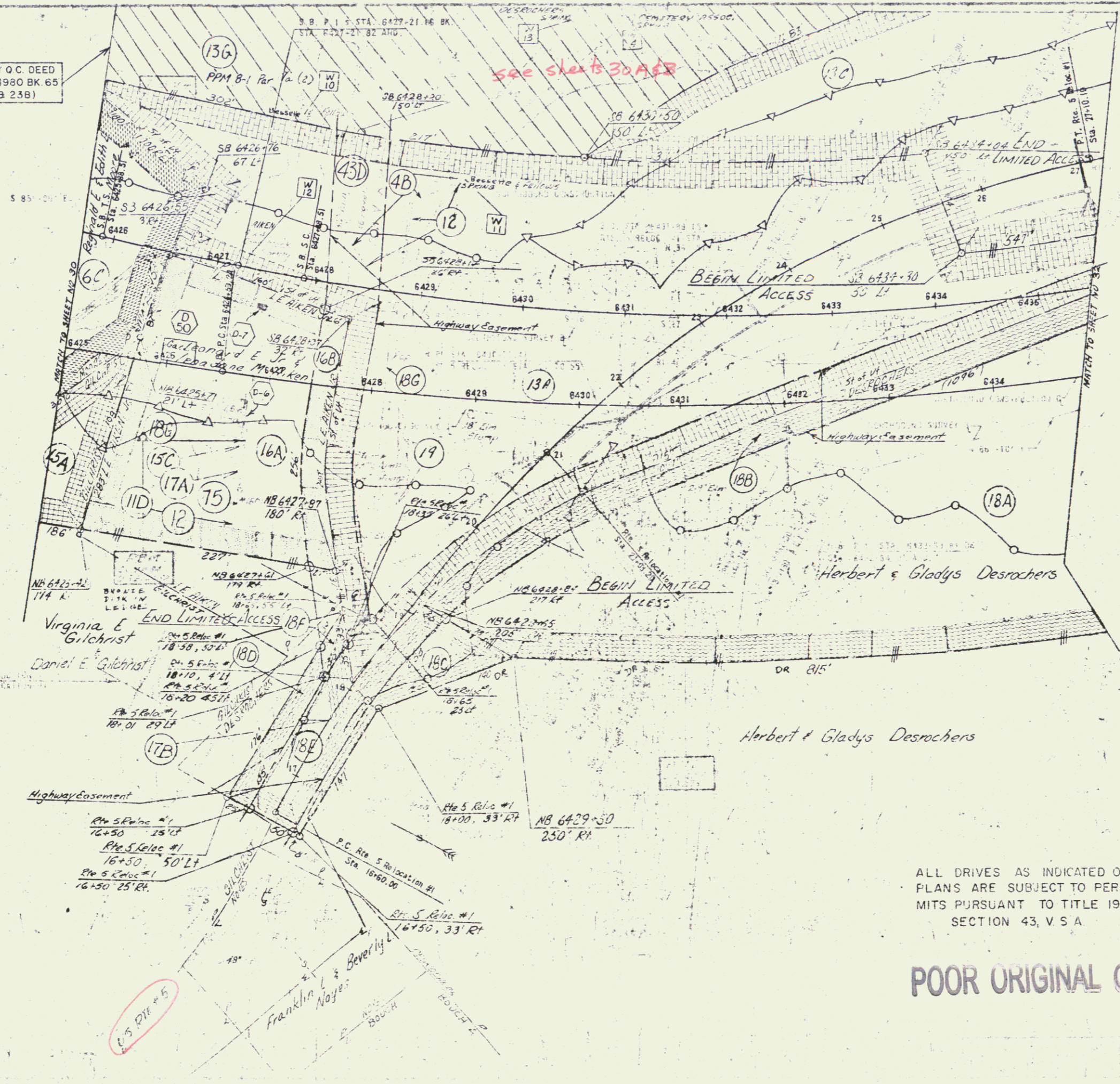


STATE OF VERMONT TO PETER BAKER BY O.C. DEED
 DATED NOV 12, 1980. RECORDED DEC 5, 1980 BK 65
 PG. 503-504. (FORMERLY PARCELS 13G & 23B)



RT# 5 RELOCATION

1	16+50.00	2	33+63.00
2	37+00.00	3	37+00.00
3	150+51	4	150+51
4	225+10	5	312+19
5	340+20	6	375+35
6	475+00	7	49+85
BANK	3' 4" FT. W.	BANK	7' 6" FT. W.

SOUTHBOUND

1	450+24.45	11	471+41.25
2	471+41.25	12	471+41.25
3	471+41.25	13	471+41.25
4	471+41.25	14	471+41.25
5	471+41.25	15	471+41.25
6	471+41.25	16	471+41.25
7	471+41.25	17	471+41.25
8	471+41.25	18	471+41.25
9	471+41.25	19	471+41.25
10	471+41.25	20	471+41.25
BANK	12' 15" FT. W.		

ALL DRIVES AS INDICATED ON
 PLANS ARE SUBJECT TO PER-
 MITS PURSUANT TO TITLE 19,
 SECTION 43, V.S.A.

POOR ORIGINAL COPY

STATE OF VERMONT
 DEPARTMENT OF HIGHWAYS
 TOWN OF BARNET - St. Johnsbury
 ROUTE NO. 101

PROJECT NO. 1-51-2(1)
 SHEET 37 OF 45

JAN 10 1984