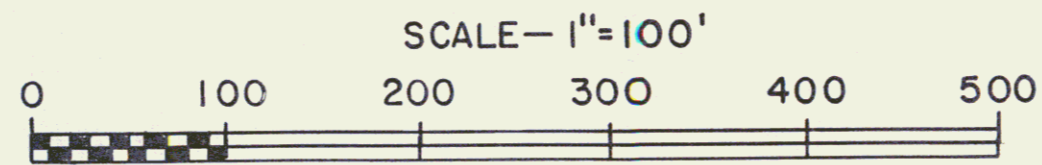
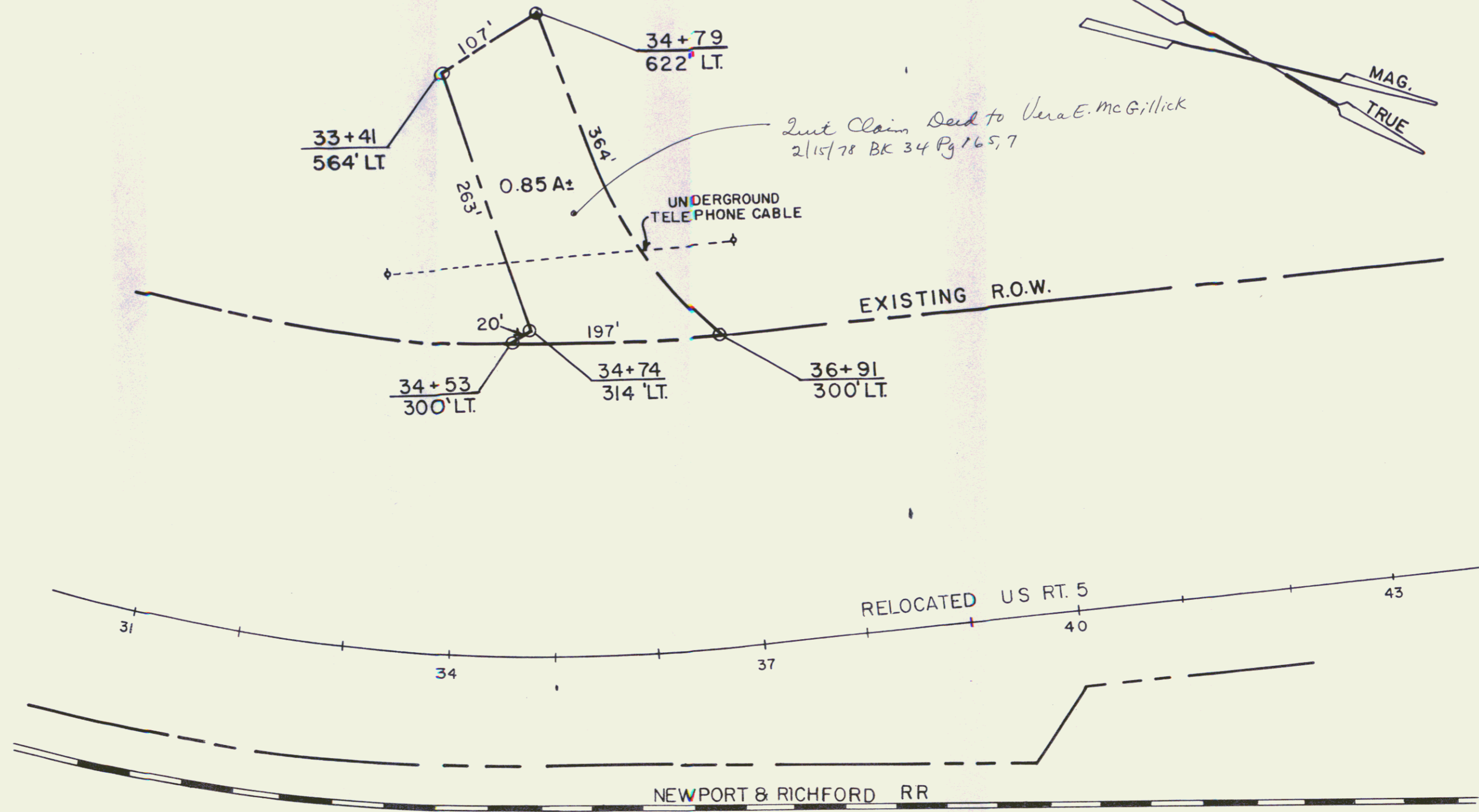


ACQUIRED AS PART OF PARCEL NO. 21 FROM VERA E. MCGILICK
 BY WD DATED 9/15/71 AND RECORDED 9/24/71 IN BK.29 PG. 418



STATE OF VERMONT DEPT. OF HIGHWAYS		
TOWN OF RYEGATE		74A
PROJECT RYEGATE - BARNET 191-2(20)		
APPROX. SCALE 1"=100'	DATE 12/19/77	DRAWN BY FJM

95 34