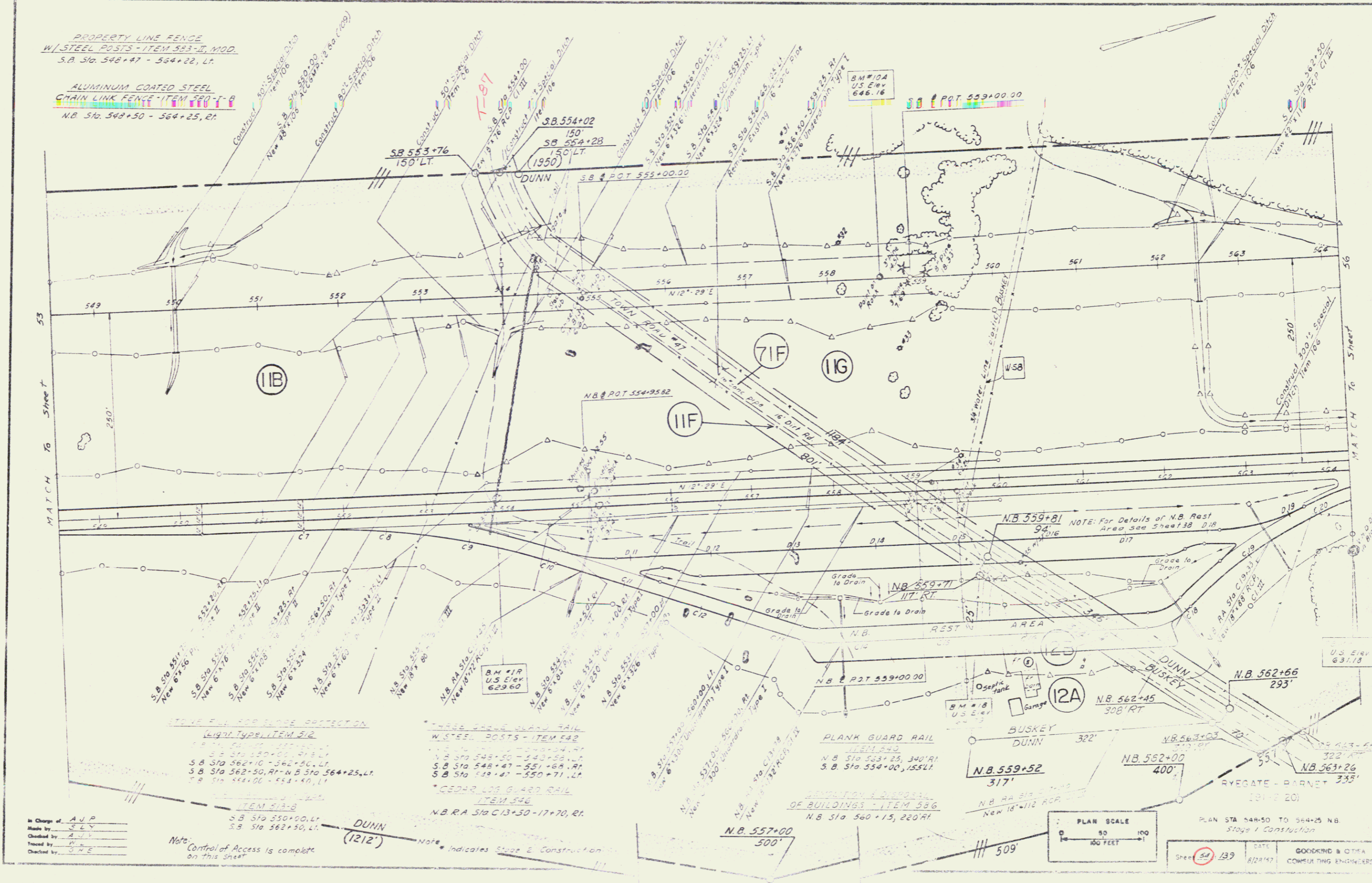


PROPERTY LINE FENCE  
W/ STEEL POSTS - ITEM 523-II, MOD.  
S.B. Sta. 548+47 - 564+22, LT.

ALUMINUM COATED STEEL  
CHAIN LINK FENCE - ITEM 520-I-B  
N.B. Sta. 548+50 - 564+25, RT.



ITEM 512 FOR SLOPE PROTECTION  
W/ 1 1/2" x 1/2" ITEM 512  
S.B. STA 550+00 - 550+00, LT.  
S.B. STA 562+10 - 562+50, LT.  
S.B. STA 548+47 - 551+68, RT.  
S.B. STA 549+47 - 550+71, LT.  
S.B. STA 544+00 - 544+40, LT.

THREE RAIL BLANK RAIL  
W/ STEEL POSTS - ITEM 542  
S.B. STA 548+50 - 548+50, LT.  
S.B. STA 548+47 - 551+68, RT.  
S.B. STA 549+47 - 550+71, LT.  
CEDAR LOG GUARD RAIL  
ITEM 546  
N.B. STA 510 C13+30 - 17+70, RT.

PLANK GUARD RAIL  
ITEM 543  
N.B. STA 563+25 - 300' RT  
S.B. STA 554+00 - 155' LT.

DEMOLITION & REPAIR  
OF BUILDINGS - ITEM 536  
N.B. STA 560+15 - 220' RT.

In Charge of A.P.P.  
Made by C.L.V.  
Checked by J.V.V.  
Traced by P.  
Checked by G.H.E.

Note: Control of Access is complete on this sheet.

Note: Indicates Stage & Construction.

PLAN SCALE  
1" = 100 FEET

PLAN STA 548+50 TO 564+25 NB  
Stage 1 Construction  
DATE 8/22/17  
SHEET 139  
GORDON & OTHER  
CONSULTING ENGINEERS