

PROPERTY LINE FENCE  
W/ STEEL POSTS - ITEM 543-T MOD.

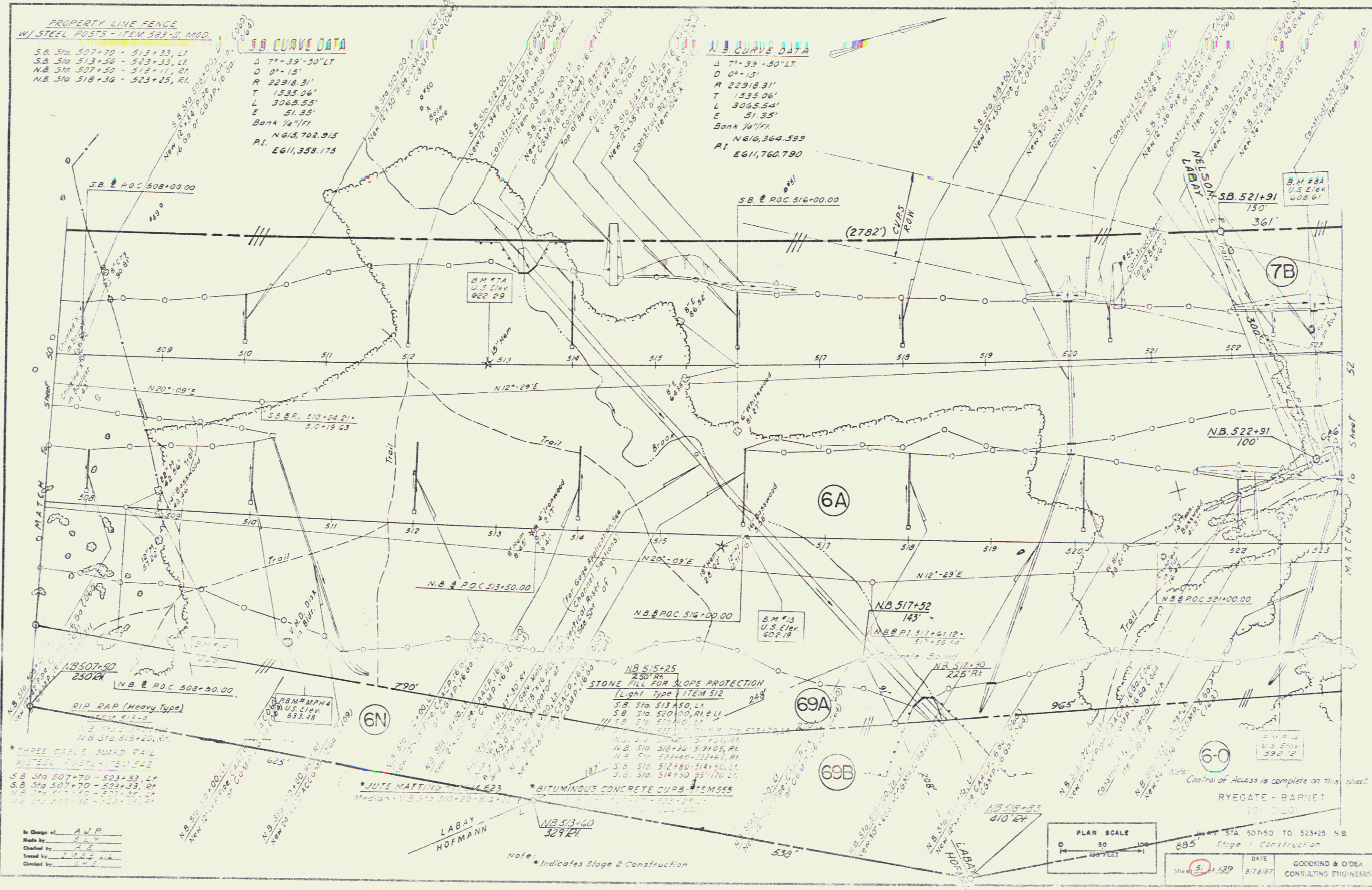
S.B. Sta. 507+70 - 513+33, LT.  
S.B. Sta. 513+36 - 523+33, LT.  
N.B. Sta. 507+50 - 513+11, RT.  
N.B. Sta. 513+36 - 523+25, RT.

**S.B. CURVE DATA**

$\Delta$  7°-39'-50"LT  
D 0°-15'  
R 22918.31'  
T 1535.06'  
L 3065.55'  
E 51.35'  
Bank 1/4"PI  
N 615,702.915  
P.I. EG11,358.175

**N.B. CURVE DATA**

$\Delta$  7°-39'-50"LT  
D 0°-15'  
R 22918.31'  
T 1535.06'  
L 3065.54'  
E 51.35'  
Bank 1/4"PI  
N 616,364.593  
P.I. EG11,760.790



\*THREE CARLE GUARD RAIL  
W/ STEEL POSTS - ITEM 542

S.B. Sta. 507+70 - 523+33, LT.  
S.B. Sta. 507+70 - 523+33, RT.  
N.B. Sta. 507+50 - 513+11, LT.  
N.B. Sta. 513+36 - 523+25, RT.

In Charge of: AUP  
Made by: SLY  
Checked by: ALE  
Drawn by: W.S.L.L.  
Cleared by: SLE

Note: \* Indicates Stage 2 Construction

PLAN SCALE  
0 50 100  
feet

STATION: STA 507+50 TO 523+25 NB.  
DATE: 8/28/87  
GOODKIND & O'DEA  
CONSULTING ENGINEERS