

US 302 1004+12.7 LI
CONSTRUCT ACCESS RD to
LEETE PROPERTY (P.O.W.
CONSTRUCTION BID ITEM)

Chain Link Fence

Elev 302 997.05-997.40 RI

Woven Wire Fence w/
Steel Posts

Elev 302 981.13-982.11 LI
Elev 302 994.157 LI 13'11"25 LI
TH 8 14'16" Elev 982-989'44 LI

Demolition and Disposal
of Buildings

Elev 302 994.13-994.14 LI

Elev 302 994.13-994.14 LI

Granite Slope Epping

Elev 302 994.13-994.14 LI

Elev 302 994.13-994.14 LI

Julie Walling

Elev 302 978.40-979.30 RI

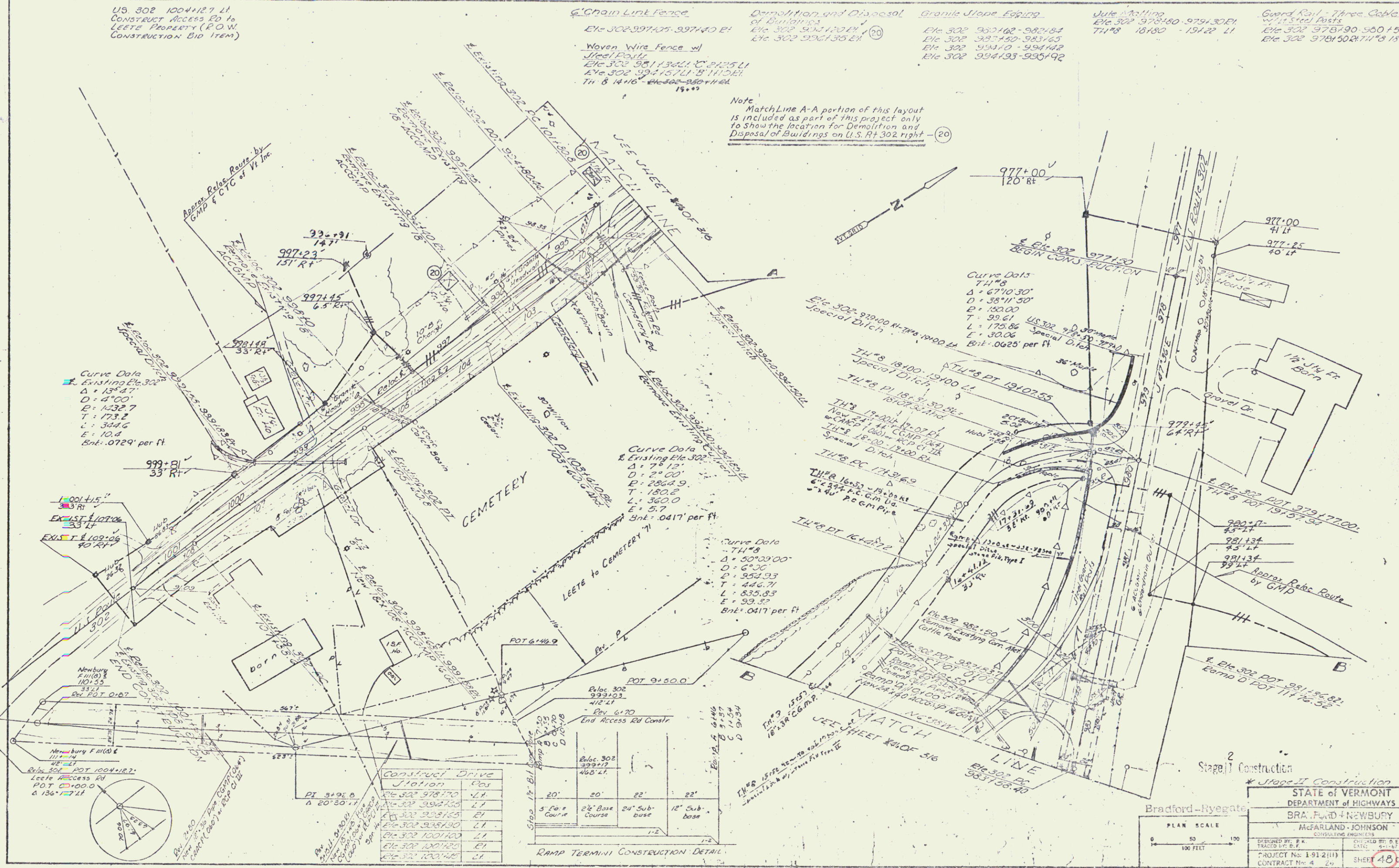
TH 18 18'10" Elev 1940-1940 LI

Guard Rail - Three Cable

Elev 302 978.79-980.15 LI

Elev 302 978.79-980.15 LI

Note
MatchLine A-A portion of this layout
is included as part of this project only
to show the location for Demolition and
Disposal of Buildings on U.S. Rt 302 right



Curve Data
Existing Elev 302
Δ = 13° 47'
D = 4° 00'
E = 1432.7
T = 173.2
L = 344.6
E = 10.4
Bt = .0729' per ft

Curve Data
Existing Elev 302
Δ = 7° 12'
D = 2° 00'
E = 2862.9
T = 180.0
L = 360.0
E = 5.7
Bt = .0417' per ft

Curve Data
Existing Elev 302
Δ = 50° 00'
D = 6° 30'
E = 924.33
T = 446.71
L = 835.83
E = 99.32
Bt = .0417' per ft

Station	Pos
978.70	1.7
982.75	2.1
987.40	2.1
1007.40	2.1
1007.40	2.1
1007.40	2.1

Station	Pos
978.70	1.7
982.75	2.1
987.40	2.1
1007.40	2.1
1007.40	2.1
1007.40	2.1

RAMP TERMINI CONSTRUCTION DETAIL

STATE OF VERMONT
DEPARTMENT OF HIGHWAYS
BRADFORD + NEWBURY
McFARLAND + JOHNSON
CONSULTING ENGINEERS

PROJECT No: 1-91-2(11)
CONTRACT No: 4 20

SHEET 48 OF 318