

Curve Data
 Δ = 25° 21' 30"
 D = 0° 30"
 P = 11,559.16'
 T = 2,530.64'
 L = 3,171.67'
 E = 288.08'
 Sbk = .0208' per ft.

Drilling & Blasting of
 Solid Rock Subgrade
 NB 5802+00 - 5805+70
 SB 5805+00 - 5809+55
 SB 5810+00 - 5814+25

Construct Barricade
 NB 5803+70 ET
 (Plank Guard Rail)

Drilling and Blasting of
 Solid Rock
 SB 5811+00 - 5812+00 ET

Woven Wire Fence w/
 Steel Post
 NB 5802+10 - 5805+10 ET
 NB 5805+00 - 5810+10 ET
 JB 5805+00 - 5810+10 ET

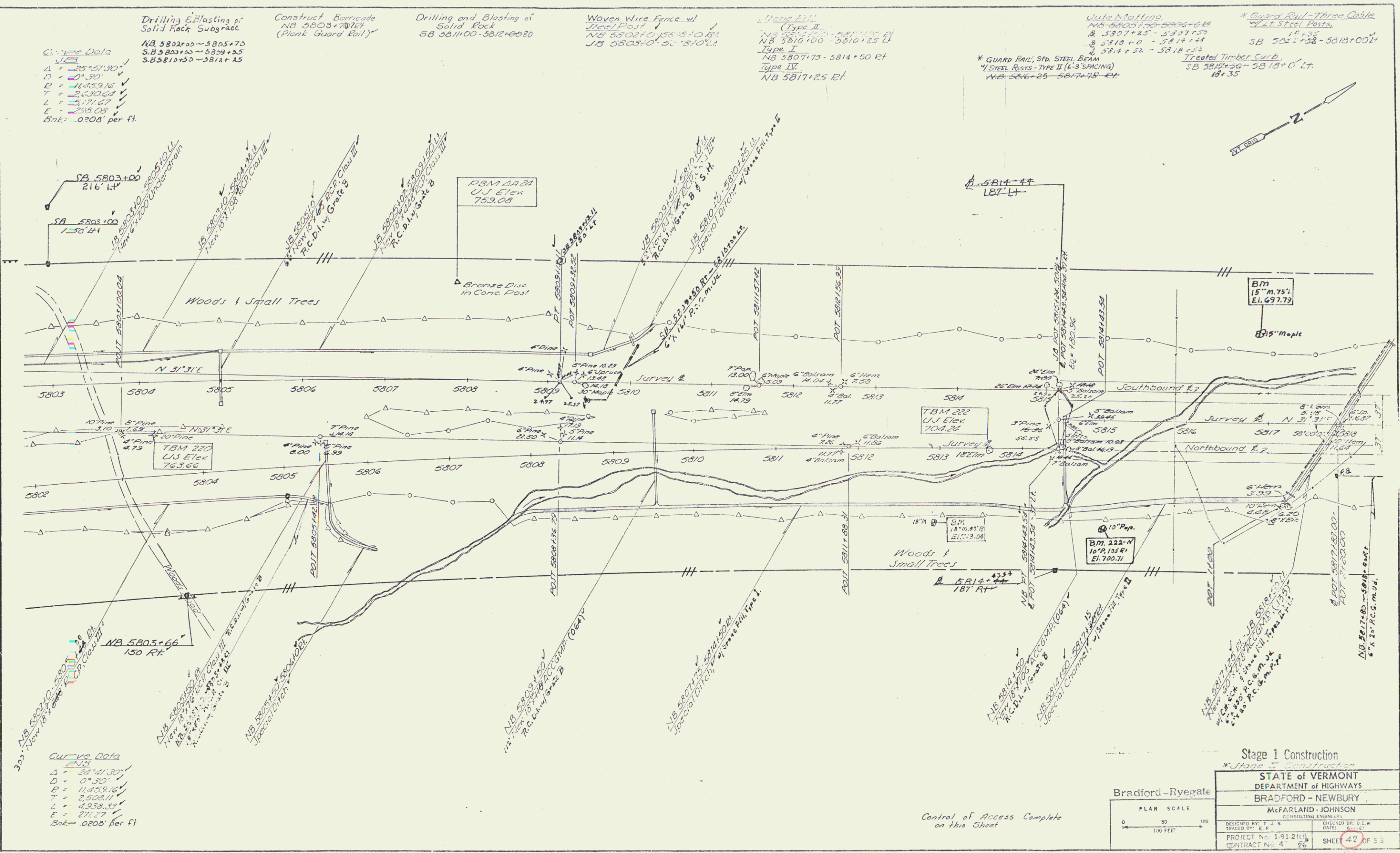
Stone Fill
 (Type II)
 NB 5807+75 - 5814+50 RT
 Type I
 NB 5807+75 - 5814+50 RT
 Type II
 NB 5817+25 ET

Waste Material
 NB 5807+75 - 5814+50 RT
 NB 5810+00 - 5814+50 RT
 NB 5814+50 - 5817+25 ET
 NB 5817+25 ET

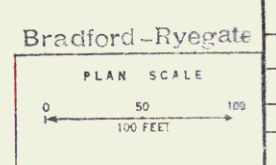
* GUARD RAIL, STD. STEEL BEAM
 * STEEL POSTS - TYPE II (6'-8" SPACING)
 NB 5816+25 - 5817+45 ET

* GUARD RAIL - Three Cable
 w/ET Steel Posts
 SB 5802+75 - 5810+00 ET
 Treated Timber Curb
 SB 5817+50 - 5818+00 ET
 18' x 35'

PLAN	SCALE
VERTICAL	SCALE
SECTION	SCALE
DETAIL	SCALE



Control of Access Complete
 on this Sheet



Stage 1 Construction	
* Stage 1 Construction	
STATE of VERMONT	
DEPARTMENT of HIGHWAYS	
BRADFORD - NEWBURY	
McFARLAND - JOHNSON	
CONSULTING ENGINEERS	
DESIGNED BY: T. J. S.	CHECKED BY: G. E. W.
TRACED BY: E. P.	DATE: 8-1-07
PROJECT No. 1-91-2111	SHEET 42 OF 33
CONTRACT No. 4 26	

K.O.W/Const. 134