

Topsoil Stockpiles  
 NB 5683+0-5685+0 RI (200 cu)  
 NB 5692+0-5695+0 RI (400 cu)

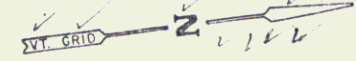
Drilling & Blasting of Solid  
 Rock Subgrade  
 NB 5684+80-5687+60  
 SB 5684+90-5687+00-  
 7+25  
 NB 5688+25-5688+75

Woven Wire Fence w/ Steel Posts  
 JB 5681+0-5681+0 LT  
 NB 5682+0-5682+0 LT  
 Take Easement Prior to Construction  
 SB 5682+0-5682+65 LT  
 NB 5682+0-5683+69 RI  
 SB 5683+65-5683+00 LT

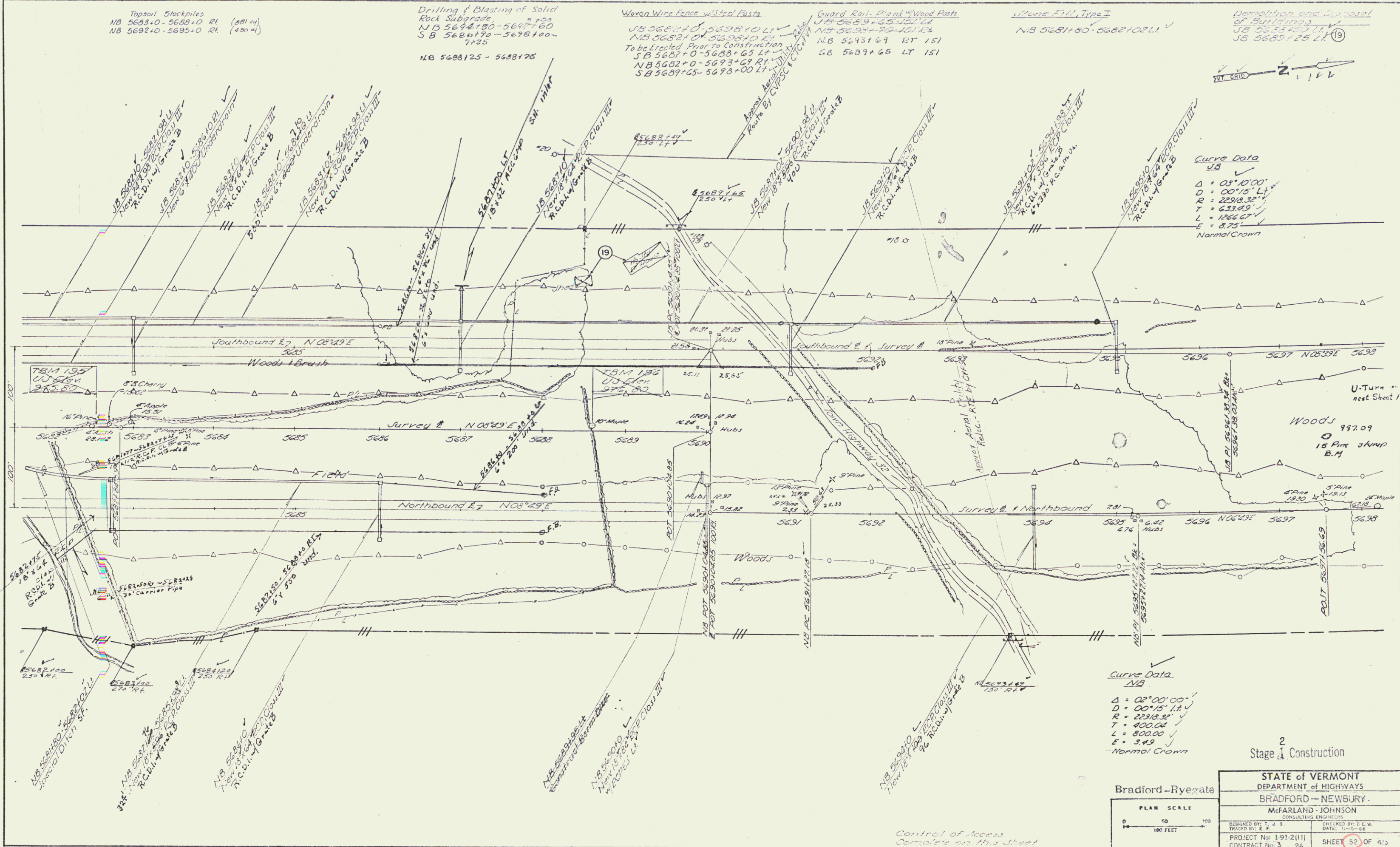
Guard Rail-Plant w/ Wood Posts  
 NB 5689+65-5691+0  
 NB 5692+70-5694+0  
 NB 5693+69 RT 151  
 SB 5689+65 LT 151

Plane Fill, Type I  
 NB 5681+80-5682+02 LT

Demolition and Removal  
 of Buildings  
 JB 5685+25 LT  
 JB 5689+25 LT (19)



PLAN  
 NOT TO SCALE  
 UNLESS OTHERWISE NOTED  
 ALL DIMENSIONS IN FEET  
 UNLESS OTHERWISE NOTED

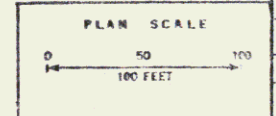


Curve Data  
 NB  
 $\Delta = 03^{\circ}10'00''$   
 $D = 00'15''$  LT  
 $R = 2298.82'$   
 $T = 623.95'$   
 $L = 1266.07'$   
 $E = 8.75'$   
 Normal Crown

Curve Data  
 NB  
 $\Delta = 02^{\circ}00'00''$   
 $D = 00'15''$  LT  
 $R = 2231.52'$   
 $T = 400.04'$   
 $L = 800.00'$   
 $E = 3.49'$   
 Normal Crown

2  
 Stage 1 Construction

Bradford-Rye Gate



STATE OF VERMONT DEPARTMENT OF HIGHWAYS BRADFORD-NEWBURY	
McFARLAND-JOHNSON CONSULTING ENGINEERS	
DESIGNED BY: J.S.	CHECKED BY: D.E.W.
TRACED BY: E.L.	DATE: 11-15-88
PROJECT No: 1-91-2(11)	SHEET 52 OF 415
CONTRACT No: 3 26	

Control of Access  
 Complete on His Sheet

145  
 430

127