

Drilling & Blasting of Solid Rock
 SB 5650+00 - 5656+00 RT
 NB 5650+00 - 5656+00 LT
 SB 5657+00 - 5663+00 RT
 NB 5657+00 - 5663+00 LT

Wave Wire Fence w/ Steel Post
 SB 5650+00 - 5656+00 RT
 NB 5650+00 - 5656+00 LT
 To be Erected Prior to Construction
 NB 5658+30 RT - 5666+00 RT
 SB 5657+18 LT - 5666+00 LT

Site Marking
 NB 5653+00 - 5659+00 RT
 NB 5659+00 - 5665+00 LT
 SB 5660+00 - 5666+00 RT

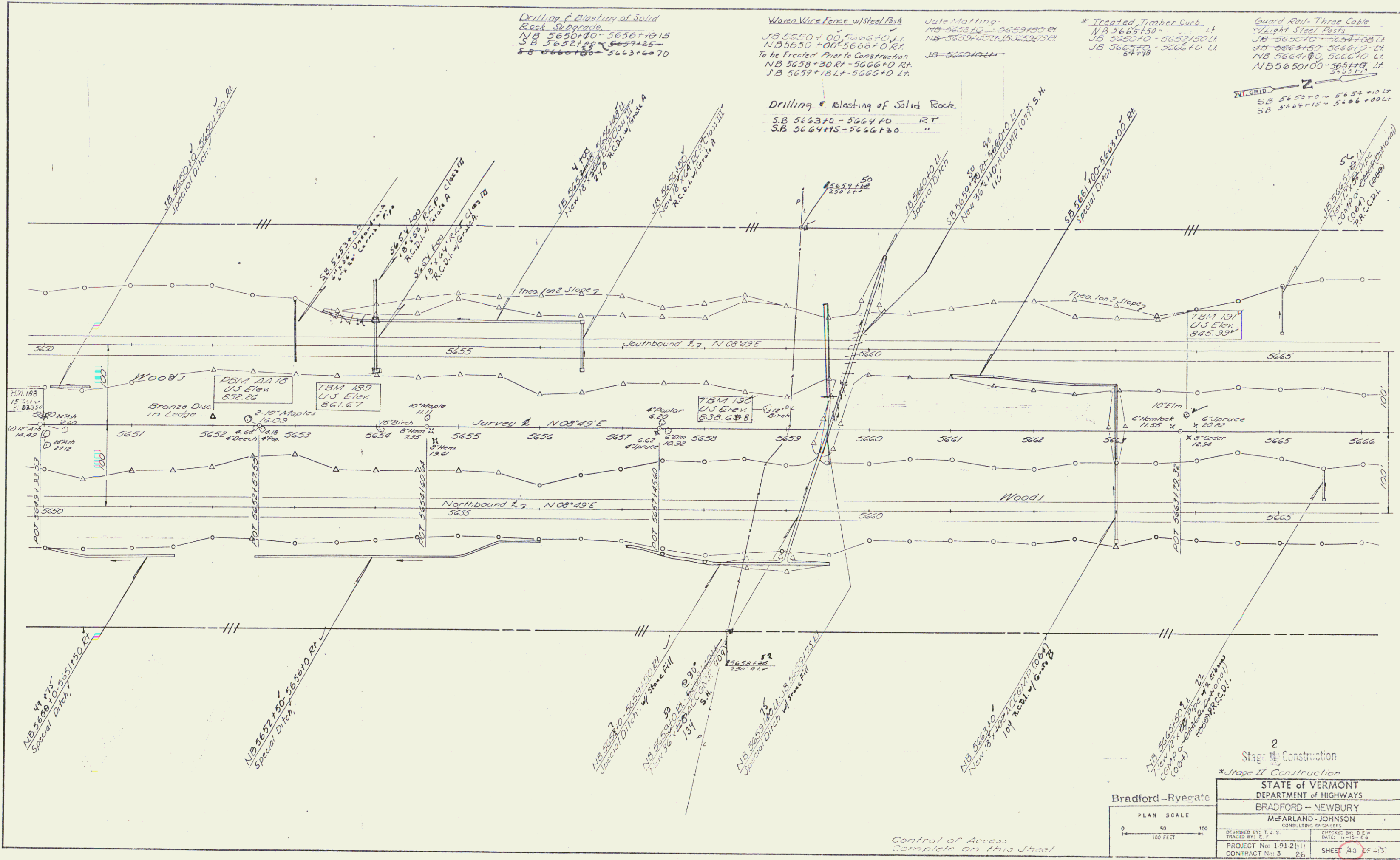
* Treated Timber Curb
 NB 5650+00 - 5656+00 RT
 NB 5657+00 - 5663+00 LT

Guard Rail - Three Cable
 Light Steel Posts
 NB 5650+00 - 5656+00 RT
 NB 5657+00 - 5663+00 LT
 NB 5658+30 - 5666+00 RT
 NB 5650+00 - 5656+00 LT

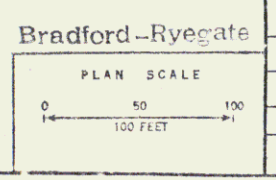
Drilling & Blasting of Solid Rock
 SB 5663+00 - 5664+00 RT
 SB 5664+05 - 5666+00 "

VI. GRID
 SB 5655+00 - 5654+10 LT
 SB 5664+10 - 5666+00 LT

PLAN
 DRAWN BY: [blank]
 CHECKED BY: [blank]
 DATE: [blank]



Control of Access
 Complete on this Street



2
 Stage I Construction
 *Stage II Construction

STATE OF VERMONT
 DEPARTMENT OF HIGHWAYS
 BRADFORD - NEWBURY
 McFARLAND - JOHNSON
 CONSULTING ENGINEERS

DESIGNED BY: J. J. S.	CHECKED BY: S. G. W.
TRACED BY: E. F.	DATE: 11-15-68
PROJECT No: 1912(11)	SHEET 43 OF 43
CONTRACT No: 3 26	

R.O.W./const. 132