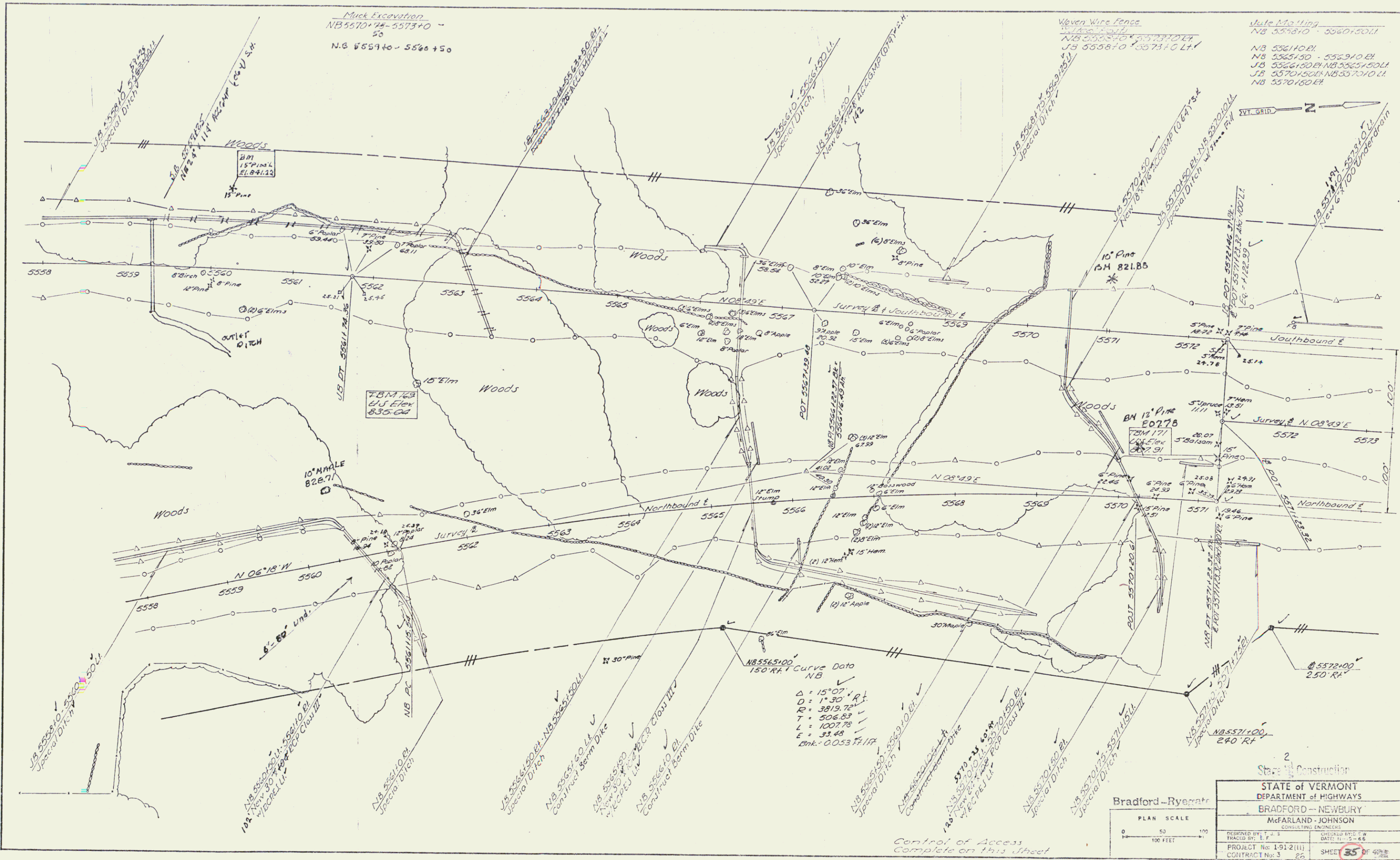
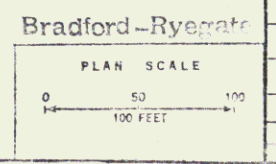


PLAN	DATE
NO. 1	NO. 1
NO. 2	NO. 2
NO. 3	NO. 3
NO. 4	NO. 4
NO. 5	NO. 5
NO. 6	NO. 6
NO. 7	NO. 7
NO. 8	NO. 8
NO. 9	NO. 9
NO. 10	NO. 10



Control of Access
Complete on this sheet



2	
State Construction	
STATE OF VERMONT	
DEPARTMENT OF HIGHWAYS	
BRADFORD - NEWBURY	
McFarland-Johnson	
CONSULTING ENGINEERS	
DESIGNED BY: T. J.	CHECKED BY: E. W.
DRAWN BY: J. E.	DATE: 11-2-48
PROJECT No: 1912(11)	SHEET 35 OF 49
CONTRACT No: 3	25

R.O.W./const. 116