

\* GUARD RAIL - STD STEEL BEAM  
 \*\* STEEL POSTS - TYPE II (6'-3" SPACING)  
 NB 5476+28 ~ 5480+00 RT.  
 NB 5476+9B ~ 5480+00 LT.

Drilling and Blasting of  
 Solid Rock Subgrade  
 NB 5464+0 ~ 5465+20

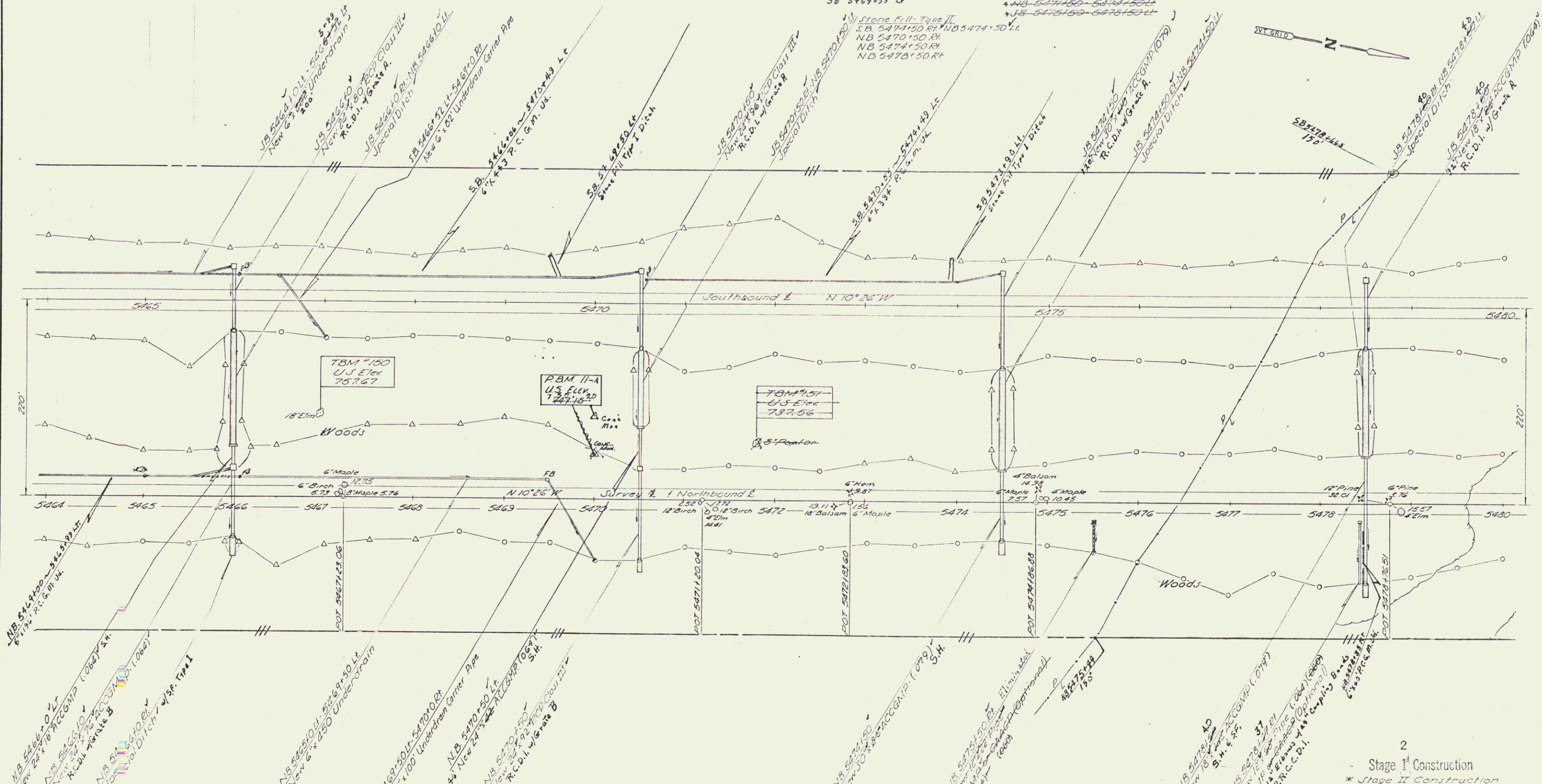
Woven Wire Fence w/ Steel Posts  
 NB 5464+0 ~ 5480+0 RT  
 JB 5464+0 ~ 5480+0 LT

Stone Fill - Type I  
 JB 5465+00 ~ 5466+00 LT  
 NB 5465+00 ~ 5466+00 RT  
 JB 5470+00 ~ 5470+00 LT  
 NB 5470+00 ~ 5470+00 RT  
 JB 5475+00 ~ 5475+00 LT  
 NB 5475+00 ~ 5475+00 RT  
 JB 5478+00 ~ 5478+00 LT  
 NB 5478+00 ~ 5478+00 RT

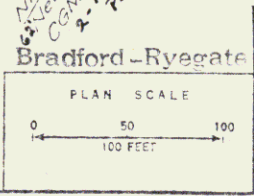
Julie Matting  
 NB 5476+00 ~ 5480+00 RT  
 JB 5476+00 ~ 5480+00 LT

\* Treated Timber Curb  
 NB 5476+00 ~ 5480+00 RT  
 JB 5476+00 ~ 5480+00 LT

\* Guard Rail - Three Gate  
 Light Steel Posts  
 NB 5476+00 ~ 5480+00 RT  
 JB 5476+00 ~ 5480+00 LT



PLAN	NO.
REVISED	DATE
BY	
CHECKED	
DATE	
BY	
CHECKED	
DATE	
BY	
CHECKED	
DATE	



2  
 Stage I Construction  
 \* Stage II Construction

STATE OF VERMONT  
 DEPARTMENT OF HIGHWAYS  
 BRADFORD-NEWBURY  
 McFARLAND - JOHNSON  
 CONSULTING ENGINEERS

BRADFORD - RYEGATE

DESIGNED BY: J.S.  
 TRACED BY: E.P.  
 PROJECT No. 1-91-2(111)  
 CONTRACT No. 2 28

CHECKED BY: L.W.  
 DATE: 3-9-91

SHEET 44 OF 342

Control of Access  
 Complete on this sheet

R.O.W/const 108