

\* GUARD RAIL - STD. STEEL BEAM  
 W/ STEEL POSTS - TYPE II (6'3" SPACING)  
 NB 5259+00 ~ 5275+00 RT  
 SB 5259+00 ~ 5270+00 RT

Demolition and Disposal  
 of Buildings  
 NB 5262+00 RT (15)

Woven Wire Fence  
 NB 5259+00 ~ 5275+00 RT  
 SB 5259+00 ~ 5275+00 RT

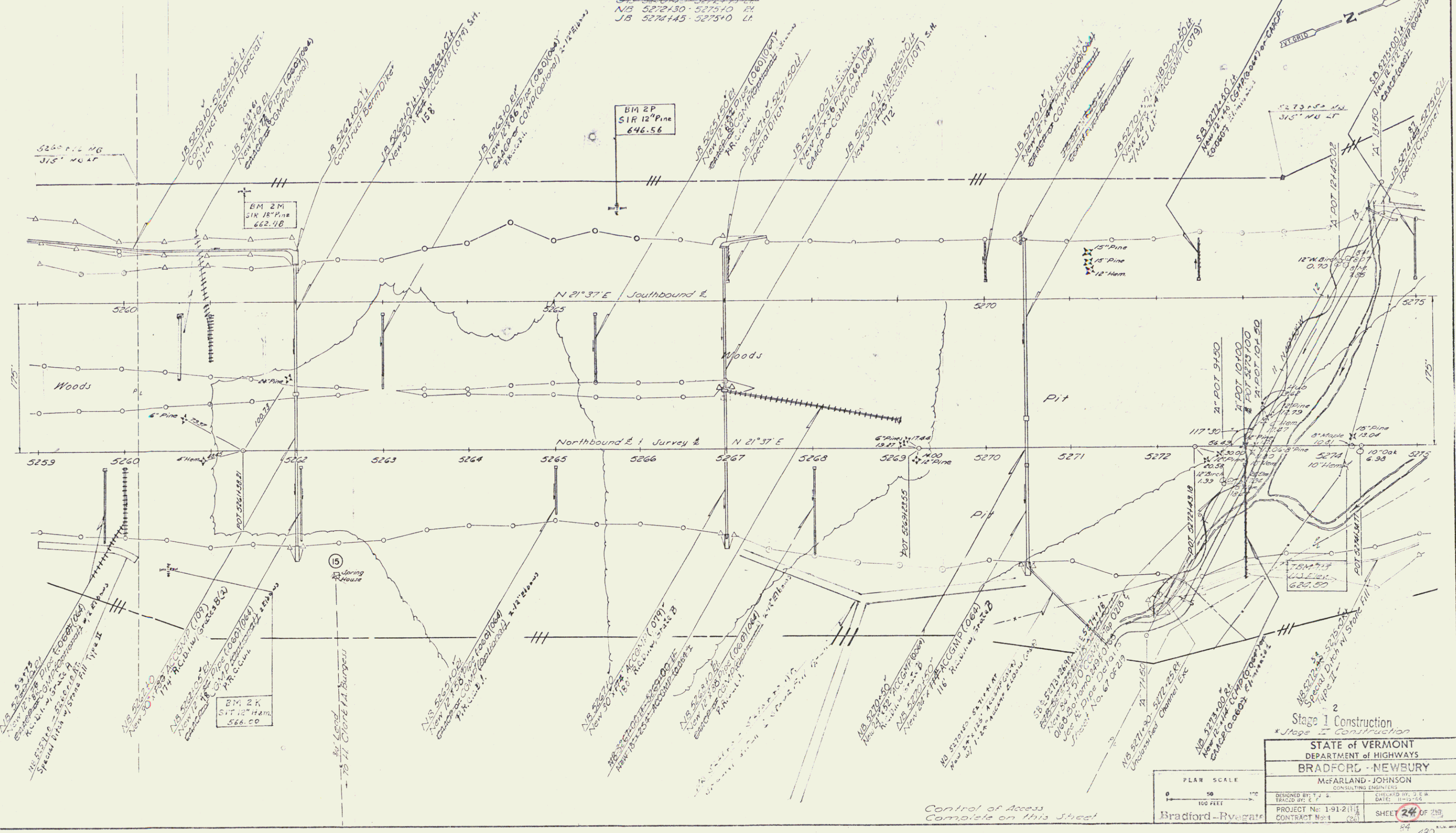
Stone Fill - Type I  
 NB 5264+00 ~ 5269+00 RT  
 SB 5264+00 ~ 5269+00 RT

Stone Fill - Type III  
 NB 5271+90 ~ 5272+25 RT

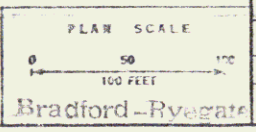
Julie Matting  
 NB 5267+00 ~ 5268+00 RT  
 NB 5267+00 ~ 5274+25 RT  
 SB 5267+00 ~ 5267+55-60 RT  
 SB 5266+00 ~ 5270+45 RT

TREATED TIMBER CURB  
 NB 5259+00 ~ 5268+00 RT  
 NB 5259+00 ~ 5276+00 RT  
 NB 5267+00 ~ 5275+10 RT

GUARD RAIL - THREE CABLE  
 W/ LIGHT STEEL POSTS  
 SB 5265+00 ~ 5275+00 LT  
 SB 5266+00



PLAN  
 SCALE  
 1" = 40'



Stage 1 Construction	
Stage 2 Construction	
STATE OF VERMONT DEPARTMENT OF HIGHWAYS	
BRADFORD - NEWBURY	
McFARLAND-JOHNSON CONSULTING ENGINEERS	
DESIGNED BY: T.J.S.	CHECKED BY: J.E.W.
DRAWN BY: E.E.	DATE: 11/19/84
PROJECT No: 1-91-211	SHEET 24 OF 25
CONTRACT No: 1	84 430

Control of Access  
 Complete on this Sheet

Row/cont  
 85