

* GUARD RAIL, STEEL BEAM w/ STEEL POSTS - TYPE II (6'-8" SPACING)
 NB 5251+95 - 5259+00 RT.
 SB 5252+90 - 5259+00 RT.

Stone Fill Type I
 SB 5256+00 - 5259+00 = 30' LT.
 Stone Fill Type II
 NB 5250+00 - 5259+00 RT.

Woven Wire Fence w/ Steel Posts
 NB 5243+00 - 5259+00 LT.
 SB 5243+00 - 5259+00 LT.

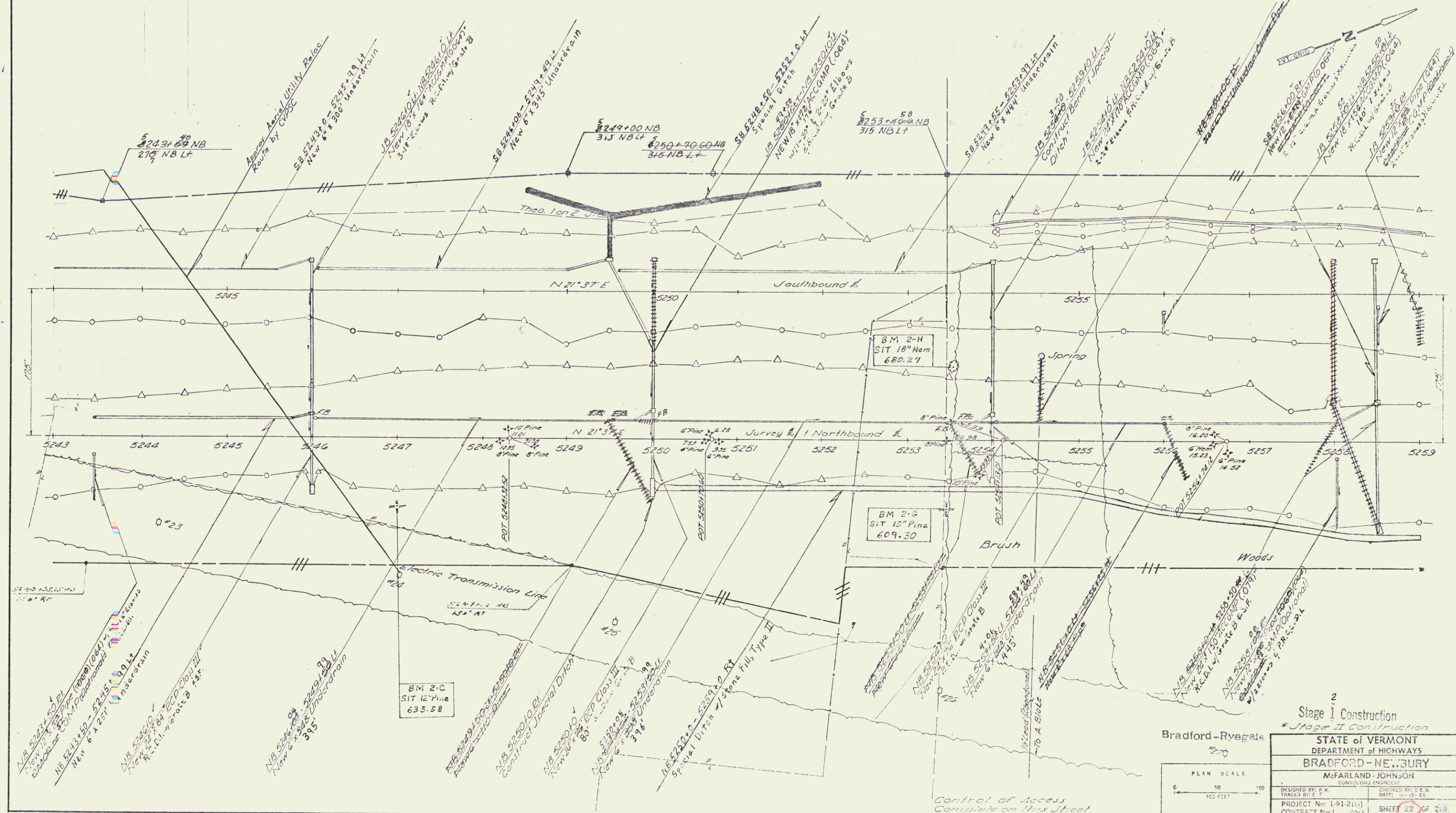
Guard Rail - Standard Steel Beam w/ Steel Posts - Type I
 SB 5251+00 - 5253+00 RT.

Julia Mailing
 NB 5243+00 - 5244+00 LT.
 NB 5244+00 - 5245+00 LT.
 NB 5245+00 - 5246+00 LT.
 NB 5246+00 - 5247+00 LT.
 NB 5247+00 - 5248+00 LT.
 NB 5248+00 - 5249+00 LT.
 NB 5249+00 - 5250+00 LT.

* TREATED TIMBER CURB
 NB 5243+00 - 5243+50 RT.
 NB 5243+50 - 5244+00 RT.
 NB 5244+00 - 5244+50 RT.

* Guard Rail - Three Cable w/ Light Steel Posts
 NB 5243+00 - 5246+00 RT.
 SB 5243+00 - 5244+00 RT.

PLAN	DATE
REVISION	BY
NOTED	BY
APPROVED	BY
DESIGNED	BY
CHECKED	BY
IN CHARGE	BY



Bradford-Rye Gate

Stage I Construction
 * Stage II Construction

STATE OF VERMONT
 DEPARTMENT OF HIGHWAYS
 BRADFORD-NEWBURY

McFARLAND-JOHNSON
 CONSULTING ENGINEERS

DESIGNED BY: P. F. TRACY, S.E.
 CHECKED BY: J. E. W. SMITH, S.E.
 PROJECT No: 1-91-2(11)
 CONTRACT No: 1 (26) SHEET 22 OF 219

32 430

34