

Curve Data
 R_{loc} 25.5
 Δ = 24°28'30"
 D = 12'00"
 T = 577.46'
 L = 203.98'
 E = 103.57'
 Bnk = 3/4" 1/4"

Construct Drive
 2'00 RLV

Guard Rail, Three Cable
 W/ Light Steel P6sFs
 Item 62121
 Rte 25B 2+55-4+75 PI
 Rte 25B 3+12-4+95 PI

Excavation and Removal of Road
 Surfaces and/or Pavements Item 119
 Rte 25 70+50 - 75+00 LT
 Rte 25 75+00 BT
 Rte 25B 2+00 - 5+00 LT

Curve Data
 R_{loc} 25
 Δ = 60°23'00"
 D = 6'30"
 T = 521.47'
 L = 328.97'
 E = 158.34'
 Bnk = 3/4" 1/4"

Curve Data
 TH 27
 Curve No. 2
 Δ = 13°41'00"
 D = 10'00"
 T = 68.74'
 L = 136.83'
 E = 572.96'
 Bnk = 1/4" 1/4"

Curve Data
 TH 27
 Curve No. 1
 Δ = 7°29'00"
 D = 35'29'35"
 T = 43.98'
 L = 75.90'
 E = 60.00'
 Bnk = 1/4" 1/4"

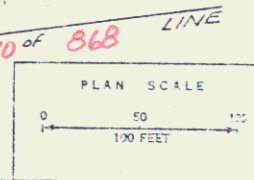
Granite Lane 55+00
 Item 236
 Rte 25 73+10 - 75+77
 Rte 25 76+57 - 77+53

Three Cable Guard Rail
 W/ Light Steel P6sFs
 Item 62121
 Rte 25 73+10 - 75+77
 Rte 25 76+57 - 77+53
 Rte 25 78+17 - 80+25 LT

Construct Drive
 Station 74.5
 TH 27 150.00 BT

Rte 25B to be built in its
 Entirety during Stage 1
 Construction.

TH 27 not part of
 this project.



Bradford	
SHEET	4-1-67
PROJ	191-2(44)
CON	Sheet 26 of 181