

4' Chain Link Fence
NB. 4920+00 - 4926+20

* Standard Steel Beam Guard Rail
w/ Steel Posts Item 515A
SB 4920+00 - 4936+00 LI
SB 4936+00 - 4938+00 LI

Property Line Fence
w/ Steel Posts Item 515A
NB 4920+00 - 4936+00 LI
SB 4936+00 - 4938+00 LI

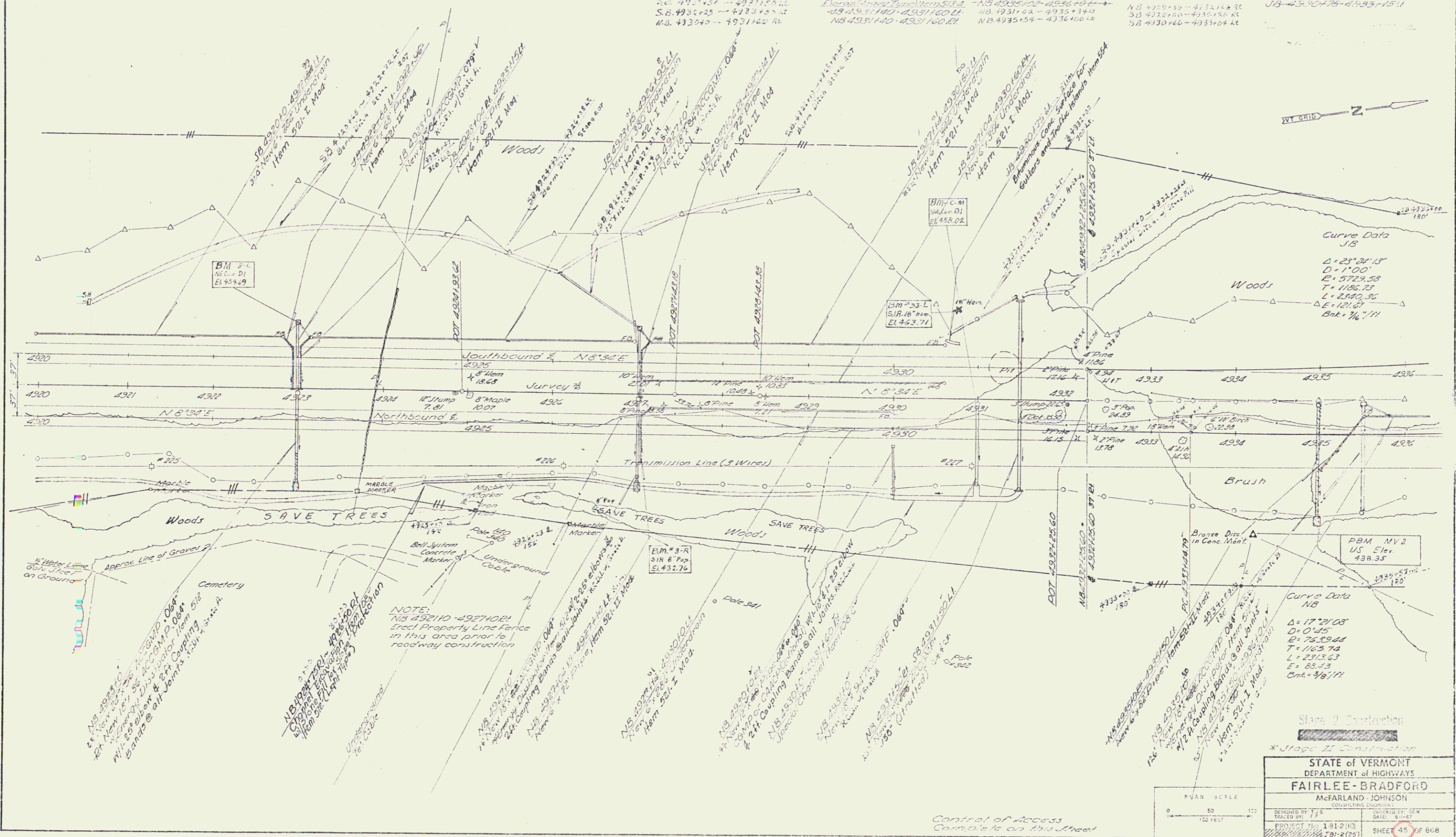
Stone Fill for Mass Pro-
tection (w/ Steel Posts Item 515A)
NB 4936+00 - 4938+00 LI
SB 4938+00 - 4940+00 LI
NB 4940+00 - 4942+00 LI
SB 4942+00 - 4944+00 LI
NB 4944+00 - 4946+00 LI
SB 4946+00 - 4948+00 LI

Diagonal Support Items 515B
SB 4931+00 LI
SB 4933+00 LI
SB 4935+00 LI
SB 4937+00 LI
SB 4939+00 LI
SB 4941+00 LI
SB 4943+00 LI
SB 4945+00 LI
SB 4947+00 LI
SB 4949+00 LI

Auto Marking Item 515C
NB 4931+00 LI
NB 4933+00 LI
NB 4935+00 LI
NB 4937+00 LI
NB 4939+00 LI
NB 4941+00 LI
NB 4943+00 LI
NB 4945+00 LI
NB 4947+00 LI
NB 4949+00 LI

* Treated Timber Curb
Item 608
NB 4931+00 LI
NB 4933+00 LI
NB 4935+00 LI
NB 4937+00 LI
NB 4939+00 LI
NB 4941+00 LI
NB 4943+00 LI
NB 4945+00 LI
NB 4947+00 LI
NB 4949+00 LI

* Three-Post Guard Rail
Light Steel Posts Item 515B
NB 4931+00 LI
NB 4933+00 LI
NB 4935+00 LI
NB 4937+00 LI
NB 4939+00 LI
NB 4941+00 LI
NB 4943+00 LI
NB 4945+00 LI
NB 4947+00 LI
NB 4949+00 LI



Curve Data
JB
 $\Delta = 25^\circ 24' 15''$
 $D = 1100'$
 $E = 5729.58$
 $T = 1186.73$
 $L = 2380.35$
 $E = 1216'$
 $\text{Bk} = 1/4''/11'$

Curve Data
NB
 $\Delta = 17^\circ 29' 08''$
 $D = 045'$
 $E = 25.8944$
 $T = 1163.74$
 $L = 2313.63$
 $E = 85.43$
 $\text{Bk} = 3/8''/11'$

NOTE:
NB 4921+00 - 4927+00 LI
Erect Property Line Fence
in this area prior to
roadway construction

Approx. Line of Gravel Pit
Cemetery
Water Line
Sewer Line
Gas Line

Stage 2 Construction
* Stage 2 Construction

STATE of VERMONT DEPARTMENT of HIGHWAYS	
FAIRLEE-BRADFORD	
McFARLAND-JOHNSON CONSULTING ENGINEERS	
DESIGNED BY: F.F.S.	DRAWN BY: S.W.
TRACED BY: F.F.S.	SCALE: 1"=40'
PROJECT No. 1912(10)	SHEET 45 OF 608
DATE: 9-1-67	

Control of Access
Complete on this Street