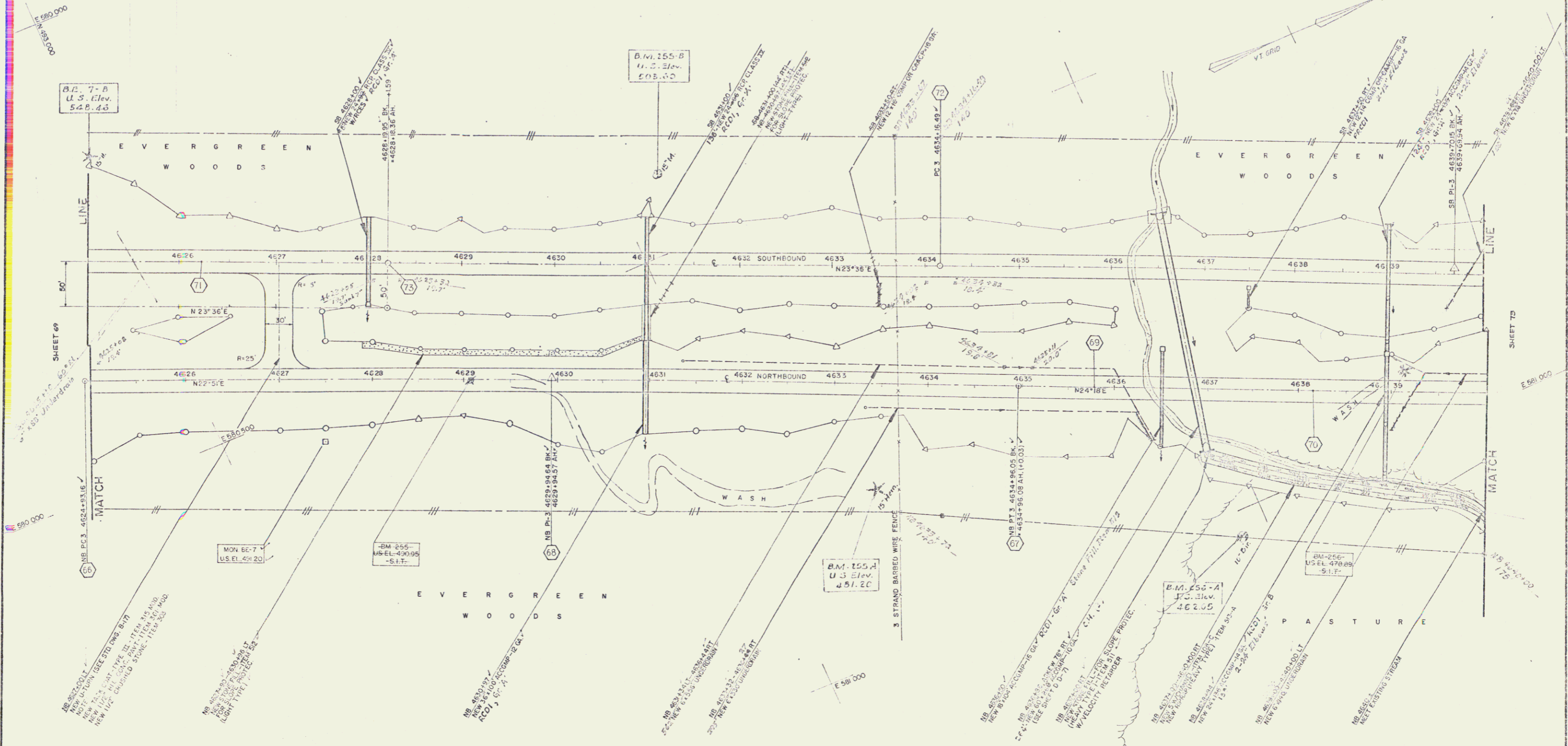
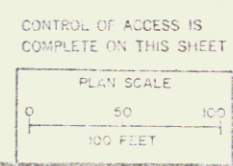


TREATED TIMBER CURB ITEM 55B	STD STEEL BEAM GUARD RAIL W/ STEEL POSTS ITEM 55A	3/4 JUTE MATTING ITEM 623	DRILLING & BLASTING OF SOLID ROCK SUBGRADE ITEM 115	ADDITIONAL SUBBASE OF SAND ITEM 202	THREE CABLE GUARD RAIL WITH LIGHT STEEL POSTS ITEM 630	RIPRAP - ITEM 515-A (HEAVY TYPE)	PROPERTY LINE FENCE ITEM 583-4E M.D.
SB 4633+50 - 4640+00 RT	SB 4625+00 - 4635+50 RT SB 4630+50 - 4635+50 RT SB 4635+50 - 4637+50 RT	NB 4636+35 - 4637+20 LT (M.D.) NB 4638+50 - 4639+10 LT (M.D.)	SB 4625+00 - 4625+50	NB 4631+00 - 4635+50 (25') NB 4635+00 - 4640+00 (16')	NB 4639+00 - 4640+00 RT NB 4635+00 - 4637+05 RT NB 4625+100 - 4625+55 RT SB 4639+50 - 4640+00 RT SB 4637+20 - 4637+25 RT	SB 4635+50 LT	NB 4625+00 - 4640+00 RT SB 4625+00 - 4640+00 LT

NB 4625+00-4640+00 LT  
CONSTRUCT PROPERTY LINE FENCE, ITEM 583-4E M.D.  
PRIOR TO COMMENCEMENT OF OTHER WORK IN THIS AREA.



NB TIES				SB TIES				CURVE DATA	
RE-10P	RE-6P	RE-6P	RE-7P	RE-4P	RE-5P	RE-6P	RE-7P	NB PI-3	SB PI-2
RE-10P	RE-6P	RE-6P	RE-7P	RE-4P	RE-5P	RE-6P	RE-7P	N 493.225 12	N 494.296 30
RE-10P	RE-6P	RE-6P	RE-7P	RE-4P	RE-5P	RE-6P	RE-7P	E 590.675 90	E 590.675 90
RE-10P	RE-6P	RE-6P	RE-7P	RE-4P	RE-5P	RE-6P	RE-7P	D = 0° 08' 38"	D = 0° 15'
RE-10P	RE-6P	RE-6P	RE-7P	RE-4P	RE-5P	RE-6P	RE-7P	Δ = 1° 26' 35"	Δ = 2° 46' 04"
RE-10P	RE-6P	RE-6P	RE-7P	RE-4P	RE-5P	RE-6P	RE-7P	R = 35,220.15'	R = 22,949.32'
RE-10P	RE-6P	RE-6P	RE-7P	RE-4P	RE-5P	RE-6P	RE-7P	T = 9-11.88'	T = 8-18.68'
RE-10P	RE-6P	RE-6P	RE-7P	RE-4P	RE-5P	RE-6P	RE-7P	L = 1,007.89'	L = 1,107.11'
RE-10P	RE-6P	RE-6P	RE-7P	RE-4P	RE-5P	RE-6P	RE-7P	E = 3.16'	E = 6.59'
RE-10P	RE-6P	RE-6P	RE-7P	RE-4P	RE-5P	RE-6P	RE-7P	DO NOT BANK	BANK 1/4" PER FT.



**THETFORD - FAIRLEE**  
CONTRACT STAGE 2 CONSTRUCTION  
STA. 4625+00 TO STA. 4640+00

PROJECT 1 91-2 (3) SHEET 71 OF 100