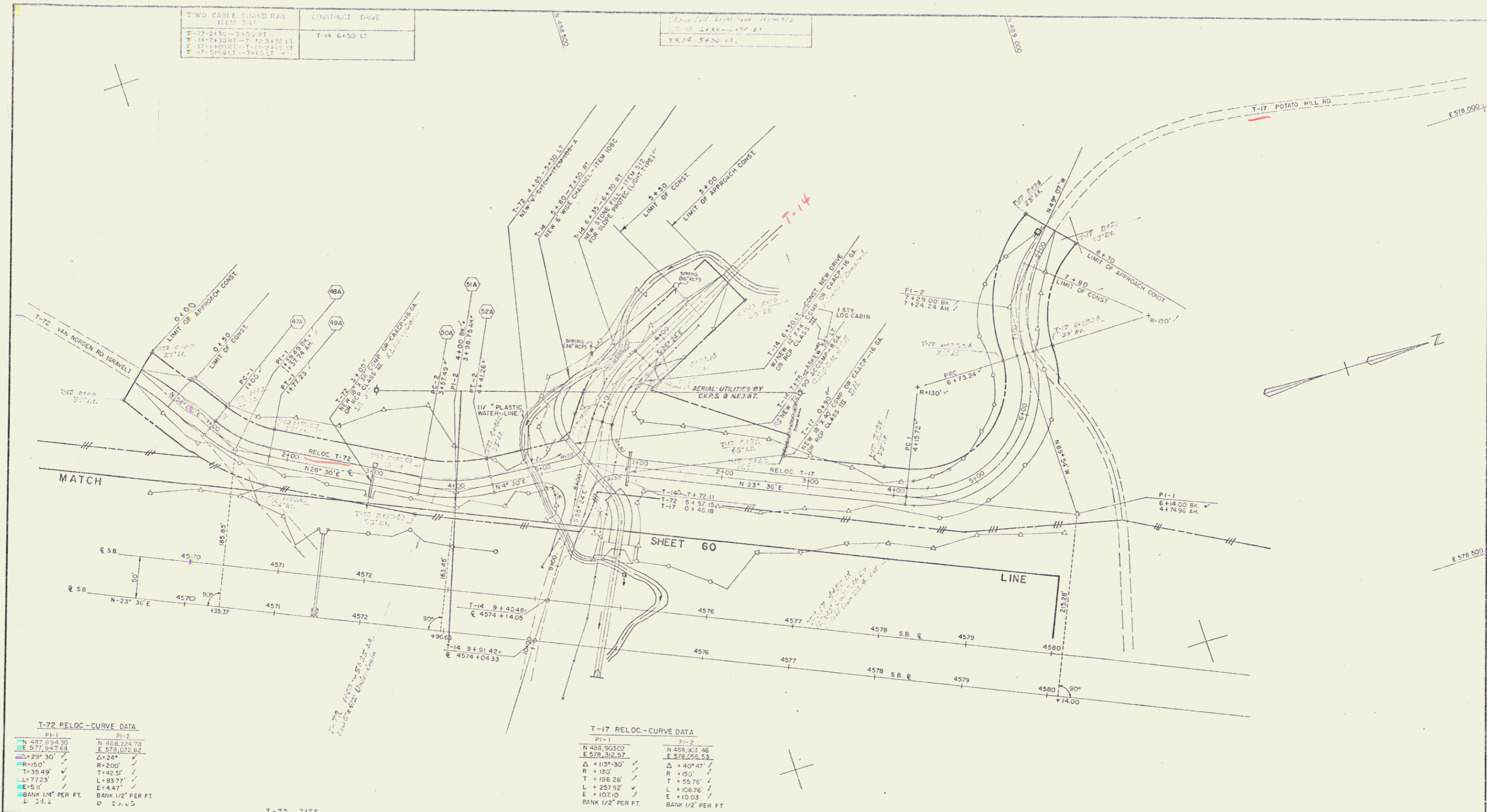


TWO CABLE GUARD RAIL ITEM 521	CONSTRUCT DRIVE
T-72 2430 - 2150 FT	T-14 6450 LT
T-14 7430 FT - T-72 5420 LT	
T-17 1400 FT - T-14 9415 LT	
T-17 5100 FT - T-14 6450 LT	

Station 771 1011 1000 1100 923
11.14 5400 LT

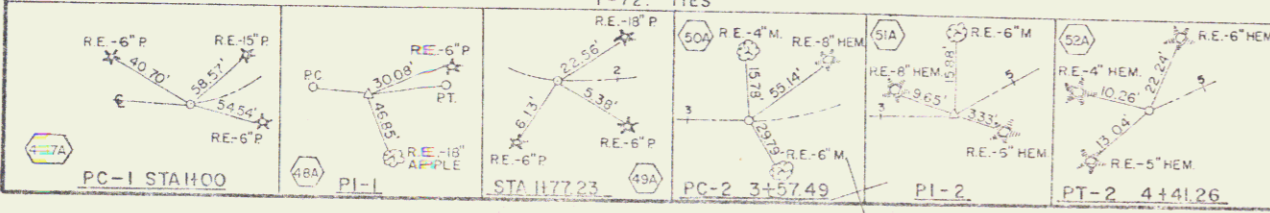


T-72 RELOC-CURVE DATA

PI-1	PI-2
N 481,934.30	N 488,224.78
E 571,947.68	E 578,072.89
Δ = 29° 30'	Δ = 24°
R = 150'	R = 200'
T = 39.49'	T = 42.51'
L = 77.23'	L = 83.77'
E = 5.11'	E = 4.47'
BANK INT PER FT	BANK 1/2" PER FT
L = 23.2	D = 23.45

T-17 RELOC-CURVE DATA

PI-1	PI-2
N 488,903.02	N 488,903.46
E 578,312.57	E 578,055.53
Δ = 113° 30'	Δ = 40° 47'
R = 100'	R = 100'
T = 196.28'	T = 55.76'
L = 257.92'	L = 106.76'
E = 107.10'	E = 10.03'
BANK 1/2" PER FT	BANK 1/2" PER FT



THETFORD - FAIRLEE
 CONTRACT STAGE I CONSTRUCTION
 TOWN ROADS T-72, T-17

PROJECT I 91-2 (9) SHEET 63 OF 63

