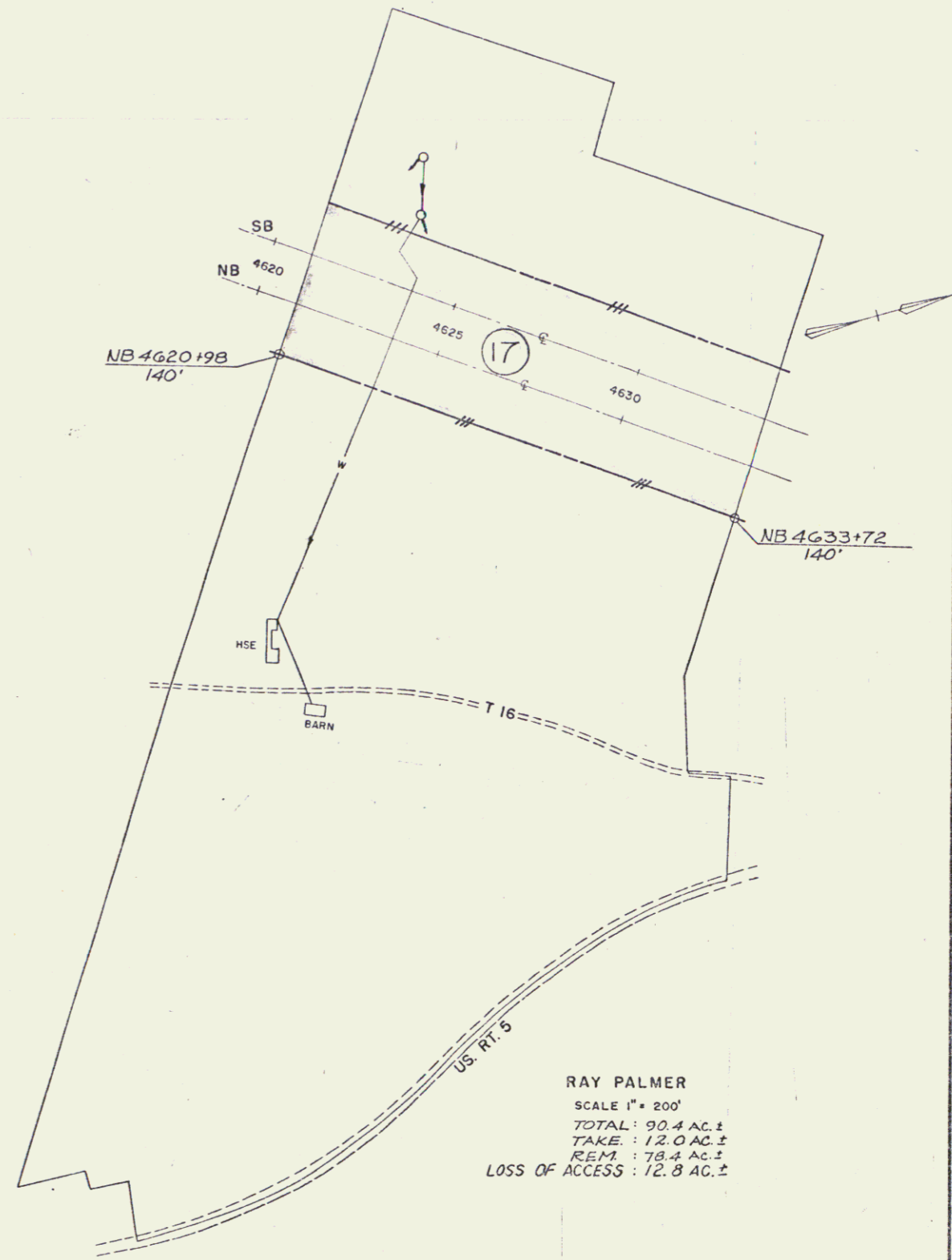


MAXWELL PALMER
SCALE 1" = 400'
TOTAL : 513.5 AC. ±
TAKE : 41.5 AC. ±
REM : 472.0 AC. ±



RAY PALMER
SCALE 1" = 200'
TOTAL : 90.4 AC. ±
TAKE : 12.0 AC. ±
REM : 78.4 AC. ±
LOSS OF ACCESS : 12.8 AC. ±

THETFORD - FAIRLEE
RIGHT OF WAY PLANS
TOTAL AREA MAPS
BOSWELL ENGINEERING CO. - RIDGEFIELD PARK, N.J.
SURVEYED BY A.C.W. CHECKED BY B.L. DATE 7/23/04
DRAWN BY J.P. IN CHARGE W.P.
PROJECT I 91-2 (14) SHEET 105 OF 111