

JUTE MATTING ITEM 623		
STATION	STATION	POS
1022+00	1026+00	47
1028+00	1029+00	47
3 = 83		

GRANITE SLOPE EDGING ITEM 556-A		
STATION	STATION	POS
1019+30	1021+23	47

DEMOLITION AND DISPOSAL OF BUILDING ITEM 585		
STATION	POS	
1020+10	167	

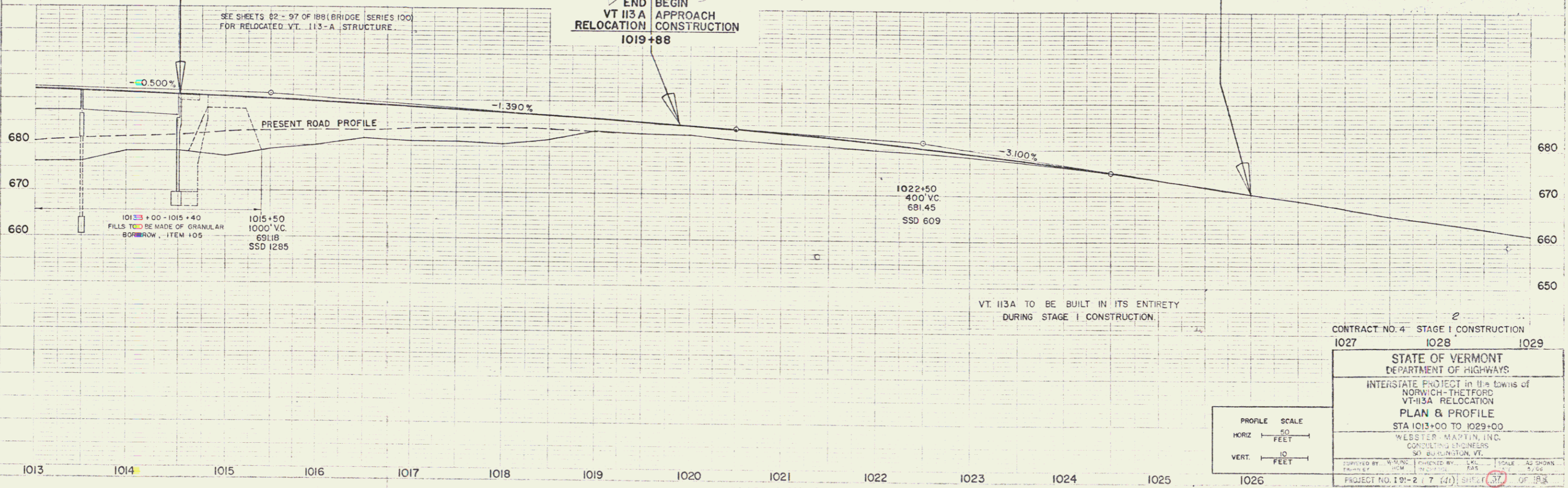
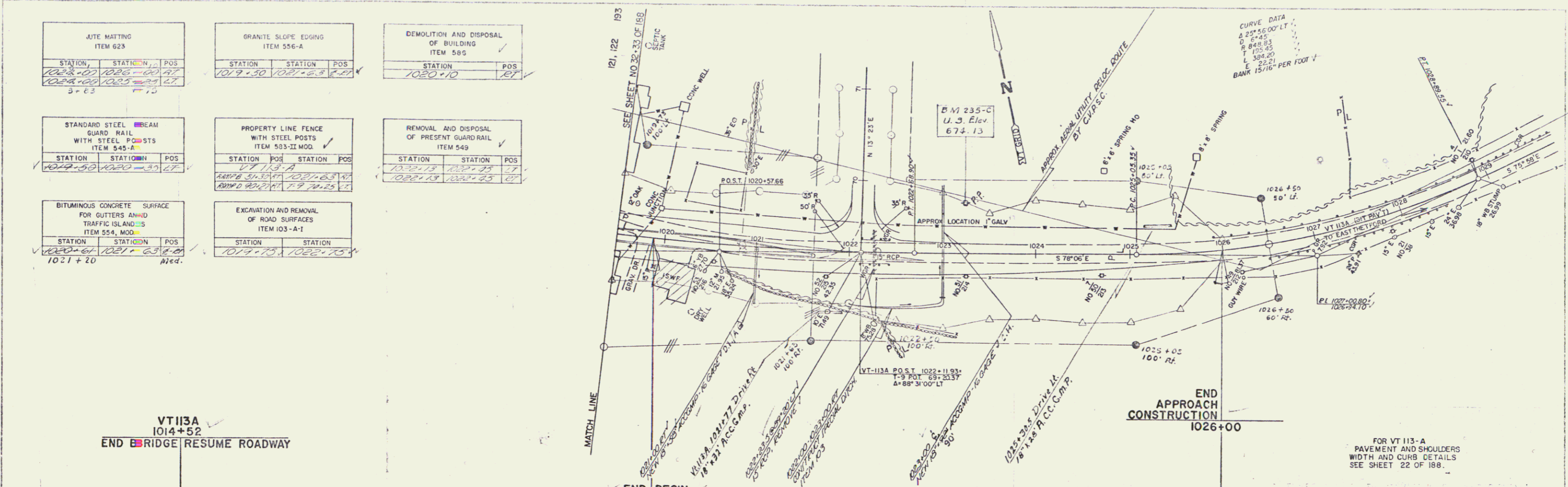
STANDARD STEEL BEAM GUARD RAIL WITH STEEL POSTS ITEM 545-A		
STATION	STATION	POS
1044+00	1049+00	47

PROPERTY LINE FENCE WITH STEEL POSTS ITEM 593-II MOD.			
STATION	POS	STATION	POS
1019+00	1021+00	1021+00	1021+00

REMOVAL AND DISPOSAL OF PRESENT GUARD RAIL ITEM 549		
STATION	STATION	POS
1032+15	1037+25	47
1022+15	1024+25	47

BITUMINOUS CONCRETE SURFACE FOR GUTTERS AND TRAFFIC ISLANDS ITEM 554, MOD.		
STATION	STATION	POS
1020+00	1021+00	47
1021+00	1021+00	47

EXCAVATION AND REMOVAL OF ROAD SURFACES ITEM 103-A-1		
STATION	STATION	
1019+15	1022+15	



CONTRACT NO. 4 STAGE I CONSTRUCTION
1027 1028 1029

STATE OF VERMONT
DEPARTMENT OF HIGHWAYS

INTERSTATE PROJECT in the towns of
NORWICH-THETFORD
VT-113A RELOCATION

PLAN & PROFILE
STA 1013+00 TO 1029+00

WEBSTER, MARTIN, INC.
CONSULTING ENGINEERS
90 BRISTOL ST.
BRISTOL, VT.

DESIGNED BY: W.M.C. CHECKED BY: L.K.C. SCALE: AS SHOWN
DRAWN BY: J.M. DATE: 12/21/83

PROJECT NO. 191-2 (7 141) SHEET (37) OF 123

12/21 1983