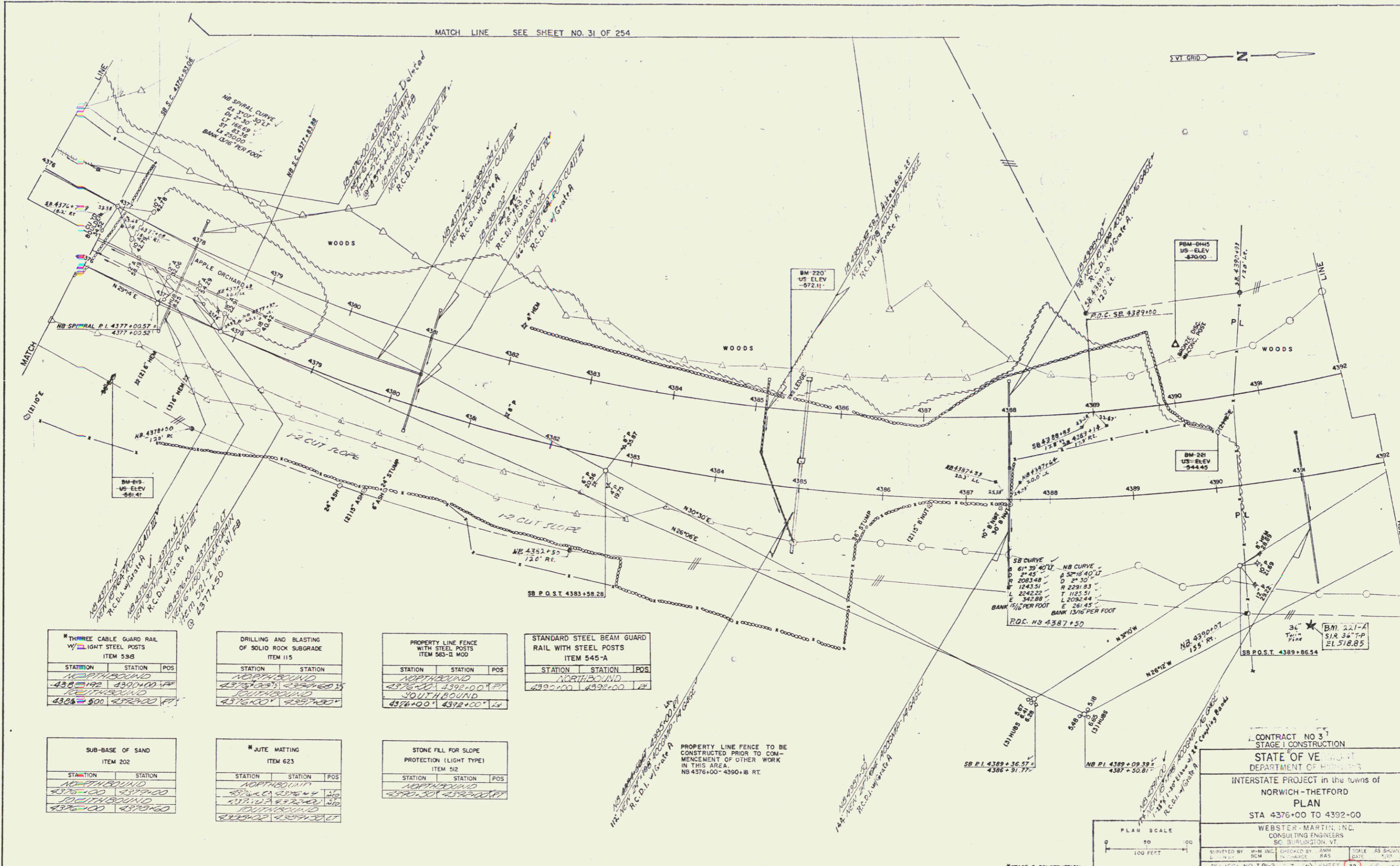
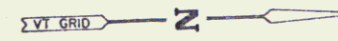


MATCH LINE SEE SHEET NO. 31 OF 254



THREE CABLE GUARD RAIL WITH LIGHT STEEL POSTS ITEM 53B		
STATION	STATION	POS
NORTHBOUND		
430+00	430+00	12
430+00	430+00	12
SOUTHBOUND		
432+00	432+00	12

DRILLING AND BLASTING OF SOLID ROCK SUBGRADE ITEM 115		
STATION	STATION	POS
NORTHBOUND		
437+00	437+00	12
437+00	437+00	12
SOUTHBOUND		
437+00	437+00	12

PROPERTY LINE FENCE WITH STEEL POSTS ITEM 563-II MOD		
STATION	STATION	POS
NORTHBOUND		
437+00	437+00	12
437+00	437+00	12
SOUTHBOUND		
437+00	437+00	12

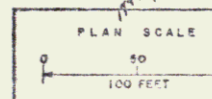
STANDARD STEEL BEAM GUARD RAIL WITH STEEL POSTS ITEM 545-A		
STATION	STATION	POS
NORTHBOUND		
432+00	432+00	12
432+00	432+00	12
SOUTHBOUND		
432+00	432+00	12

SUB-BASE OF SAND ITEM 202		
STATION	STATION	POS
NORTHBOUND		
437+00	437+00	12
437+00	437+00	12
SOUTHBOUND		
437+00	437+00	12

JUTE MATTING ITEM 623		
STATION	STATION	POS
NORTHBOUND		
437+00	437+00	12
437+00	437+00	12
SOUTHBOUND		
437+00	437+00	12

STONE FILL FOR SLOPE PROTECTION (LIGHT TYPE) ITEM 512		
STATION	STATION	POS
NORTHBOUND		
437+00	437+00	12
437+00	437+00	12
SOUTHBOUND		
437+00	437+00	12

PROPERTY LINE FENCE TO BE CONSTRUCTED PRIOR TO COMMENCEMENT OF OTHER WORK IN THIS AREA
NB 4376+00 - 4390+00 RT.



CONTRACT NO. 3
STAGE I CONSTRUCTION

STATE OF VERMONT
DEPARTMENT OF HIGHWAYS

INTERSTATE PROJECT in the towns of
NORWICH-THETFORD

PLAN
STA 4376+00 TO 4392+00

WEBSTER-MARTIN, INC.
CONSULTING ENGINEERS
50 BURLINGTON VT.

DESIGNED BY W.M. INGLIS CHECKED BY A.M. RAS. DATE 4-25-65
PROJECT NO. I 91-2 (17) (4) SHEET 32 OF 254