

JUTE MATTING
ITEM 503

STATION	STATION	POS
297+00	297+00	0
297+00	297+00	0
297+00	297+00	0

STONE FILL (LIGHT TYPE)
ITEM 514-B 5112

STATION	STATION	POS
297+00	297+00	0
297+00	297+00	0
297+00	297+00	0

STONE FILL FOR SLOPE PROTECTION (HEAVY TYPE) LIGHT
ITEM 511 5112

STATION	STATION	POS
297+00	297+00	0
297+00	297+00	0
297+00	297+00	0

RAP RIP (HEAVY TYPE)
ITEM 513-A

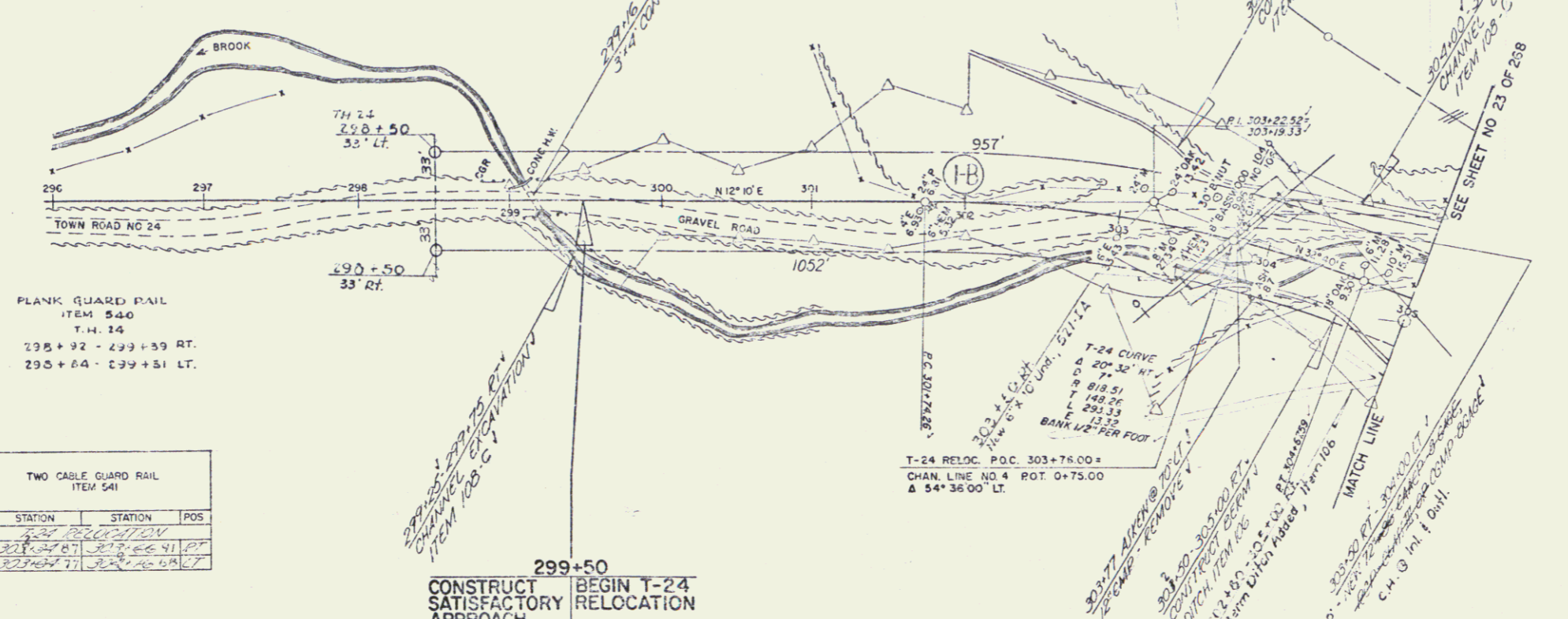
STATION	POS
297+00	0
297+00	0
297+00	0

TWO CABLE GUARD RAIL
ITEM 541

STATION	STATION	POS
297+00	297+00	0
297+00	297+00	0
297+00	297+00	0

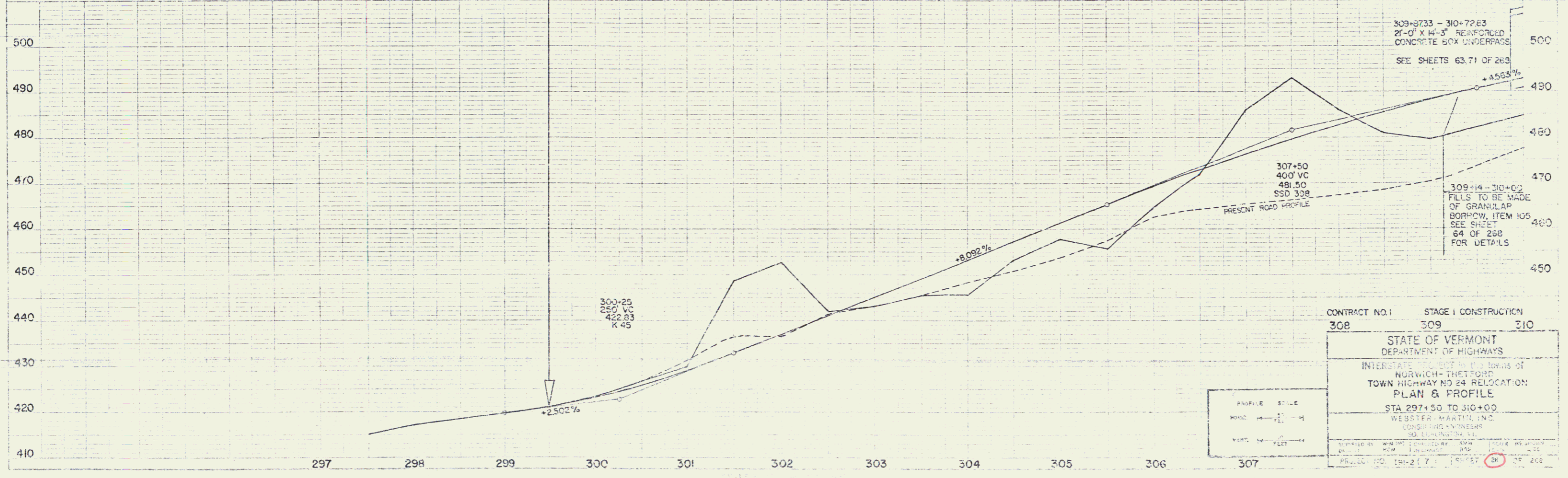
REMOVAL & DISPOSAL OF PRESENT GUARD RAIL, ITEM 549
298+77 - 293+25 LT.
299+07 - 297+20 RT.

PLANK GUARD RAIL
ITEM 540
T.H. 14
295+32 - 299+59 RT.
295+04 - 299+51 LT.



299+50
CONSTRUCT SATISFACTORY APPROACH
BEGIN T-24 RELOCATION

TOWN HIGHWAY NO. 24 IS TO BE BUILT IN ITS ENTIRETY DURING STAGE I CONSTRUCTION



CONTRACT NO. 1 STAGE I CONSTRUCTION
308 309 310

STATE OF VERMONT
DEPARTMENT OF HIGHWAYS

INTERSTATE PROJECT IN THE TOWNS OF
NORWICH & THETFORO
TOWN HIGHWAY NO. 24 RELOCATION
PLAN & PROFILE

STA 297+50 TO 310+00
WEBSTER & MARTIN, INC.
CONSULTING ENGINEERS
30 LINDA DRIVE, L.L.
NORWICH, VERMONT 05055

DESIGNED BY: [Signature] DRAWN BY: [Signature] CHECKED BY: [Signature]
DATE: 10/15/87 SCALE: AS SHOWN SHEET NO. 268 OF 268