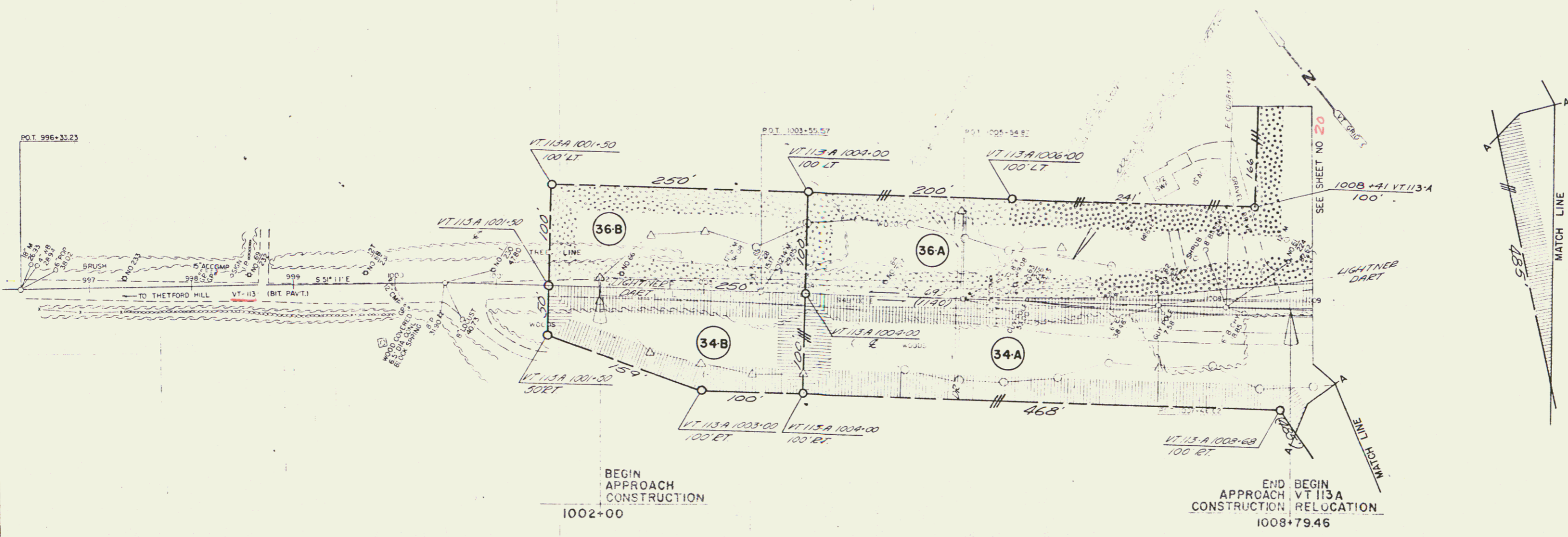


GRANITE SLOPE EDGING ITEM 556-A		
STATION	STATION	POS
1000+00	1001+00	E

PROPERTY LINE FENCE WITH STEEL POSTS ITEM 583-D MOD			
STA	POS	STA	POS
VT 113A			
VT 113A 1004+00	C	CHAPPA 25-08	CT
VT 113A 1004+00	T	CHAPPA 25-08	CT



STATE OF VERMONT
DEPARTMENT OF HIGHWAYS
INTERSTATE PROJECT in the towns of
NORWICH-THETFORD
VT-113A RELOCATION
PLAN
STA 997+00 TO 1013+00
WEBSTER-MARTIN, INC
CONSULTING ENGINEERS
22 BROADVIEW AVENUE
NORWICH, VERMONT
DRAWN BY: H.M. DATE: 5/78
SCALE: AS SHOWN
PROJECT NO: 191-2(1,3) SHEET 21 OF 27

47