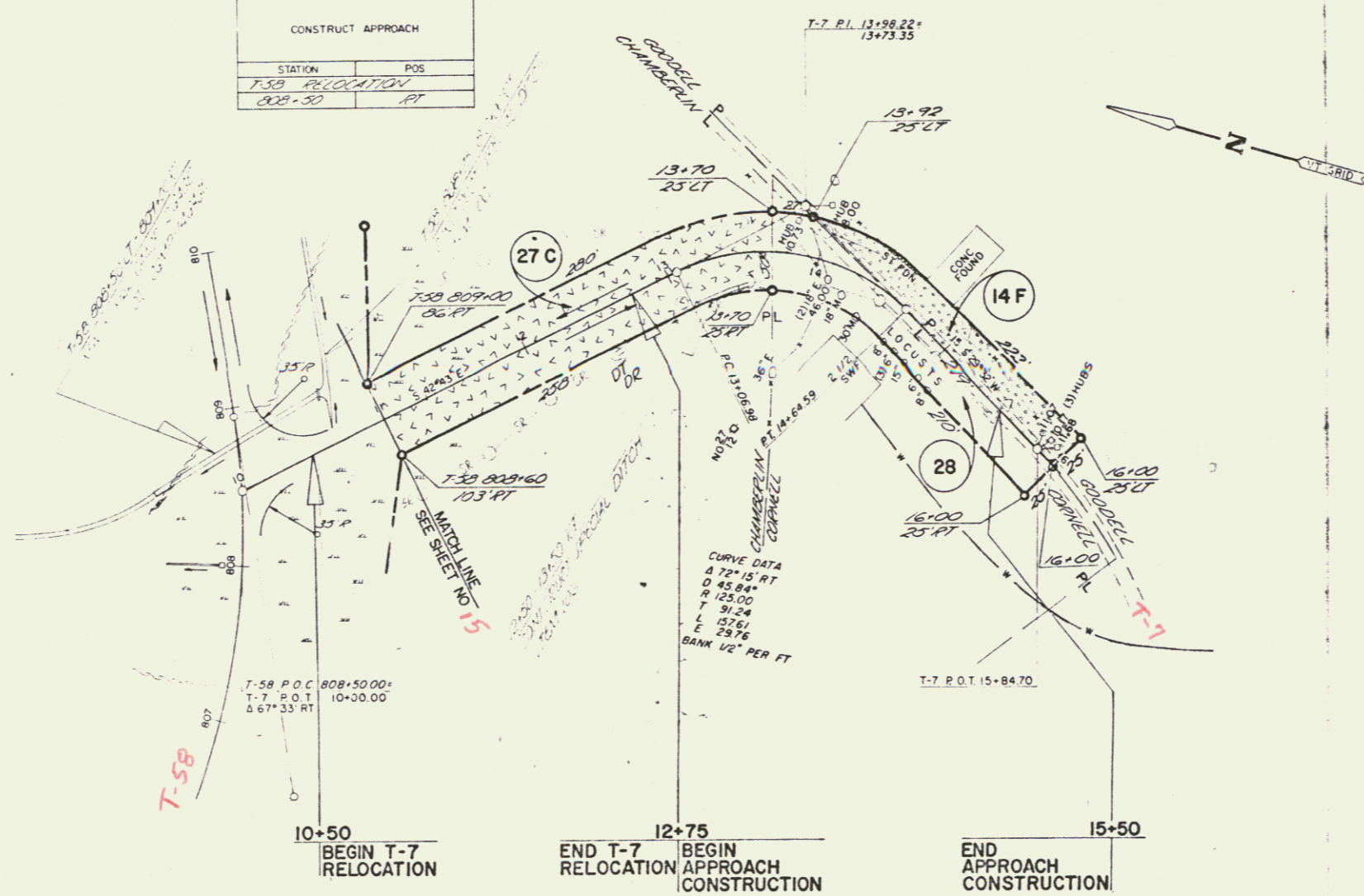


CONSTRUCT APPROACH	
STATION	POS
T-58 RELOCATION	RT
008+30	RT



POOR ORIGINAL COPY

NOT TO BE CONSTRUCTED			
STATE OF VERMONT DEPARTMENT OF HIGHWAYS			
INTERSTATE PROJECT in the towns of NORWICH - THEFORD TOWN HIGHWAY NO 7 RELOCATION			
PLAN STA 11+00 TO 16+00			
WEBSTER-MARTIN, INC. CONSULTING ENGINEERS 50 BURLINGTON, VT			
DESIGNED BY: W-M INC	CHECKED BY: AMM	SCALE: AS SHOWN	
DRAWN BY: H-W	IN CHARGE: RAS	SHEET: 16	OF: 22
PROJECT NO: 191-2(13)			